

# 2000 SERIES® RACEWAY



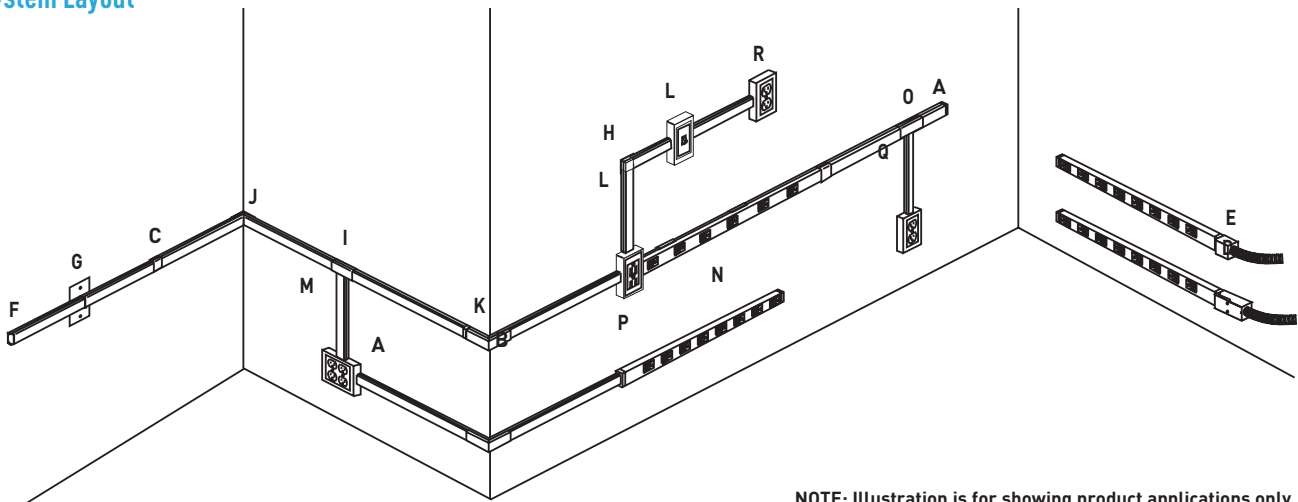
Two-piece, single-channel raceway. Easy-to-install and ideal for basic power or communication/low voltage installations

### CODE REFERENCE

**cULus Listed Raceway:**  
File E4376 Guide RJBT.

**Fittings:**  
File E41751 Guide RJPR.  
Meets Article 386 of NEC.  
Meets Section 12-1600 of CEC.

### System Layout



**NOTE:** Illustration is for showing product applications only.

### KEY

- |                                |                                    |                                 |
|--------------------------------|------------------------------------|---------------------------------|
| A. 500 Series Raceway          | G. 2051H Flush Plate Adapter       | M. 2048-2 Two-Gang Device Box   |
| B. 518 External Elbow Fitting  | H. 2011 90° Flat Elbow Fitting     | N. 20GB506 Plugmold Strip       |
| C. 2006 Cover Clip             | I. 2015 Tee Fitting                | O. 2089A Flush Plate Adapter    |
| D. 2010A3 Entrance End Fitting | J. 2017TC Internal Corner Coupling | P. 2089E End-Reducing Connector |
| E. 2010A2 Entrance End Fitting | K. 2018C External Elbow Cover      | Q. 5748 Single-Gang Device Box  |
| F. 2010B Blank End Fitting     | L. 2048 Single-Gang Device Box     |                                 |

### COLOR OPTIONS



2000® Series Raceway Part Numbers with a "V" prefix have an ivory finish. Part Numbers with a "G" prefix have a gray finish. Part Numbers without a prefix or suffix have a protective zinc finish.

**Custom color options are also available. Consult the factory for more information.**

## 2000 SERIES® RACEWAY

## 2000 Series Raceway Ordering Information (continued)

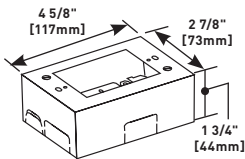
**IWE-S, GWE-S** Spray Paint

Used for touching up large areas.  
Contains 12 oz. of paint.

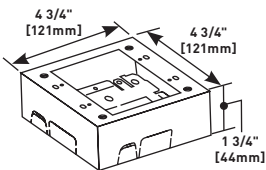
**NOTE:** Can only be shipped via ground transportation.

**IWE-P, GWE-S** Touch-Up Paint Pen

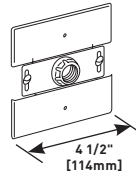
Used for touching up small areas.  
Contains 0.3 oz. of paint.

**V2048, G2048** Single-Gang Device Box

Cover has twistouts for 2000, 500, and 700 Series Raceways. Base has 1/2" trade size KO and rectangular KO for extension to wall box. Base has #10 threaded hole for ground connection.

**V2048-2, G2048-2** Two-Gang Device Box

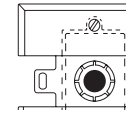
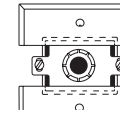
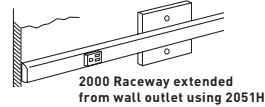
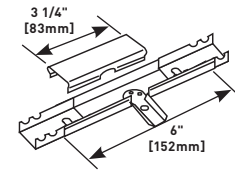
Cover has twistouts for 2000, 500, and 700 Series Raceways. Base has 1/2" trade size KO and rectangular KO for extension to wall box. Base has #10 threaded hole for ground connection.

**V2051H, G2051H** Flush Plate Adapter

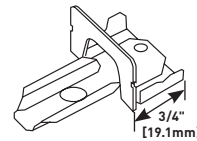
Feeds 2000 Series Raceway from an existing wall outlet. Equipped with 1/2" trade size threaded stud, toothed lock washer for grounding, and conduit bushing.

2051H fastened to horizontally mounted wall box.

2051H fastened to vertically mounted wall box.

**V2089** Side Reducing Connector

Connects 2000 Series Raceway with 500 Series Raceway through the side of 2000 Series Raceway.

**V2089E** End Reducing Connector

Connects 2000 Series Raceway with 500 Series Raceway through the end of 2000 Series Raceway.

**NOTE:** Parts identified with this symbol are Certified to Canadian Safety Standards for sale in Canada. When ordering these products, change the "V" color prefix to "CV" or the "G" color prefix to "CG" to deNOTE the Canadian versions.

