

Armoured Cable / Flexible Conduit

Fittings

CI2173 / CI2174



Zinc Die Cast Locknut

CI4000



Aluminum Locknut and Plastic Bushing



Cat. No.	Trade Size (in.)	Clamping Range (in.)		Suggested Application AC90 (BX)	Flex. Conduit
		Min.	Max.		
Two Screw Fittings (Zinc Alloy)					
CI2173	2-1/2	2.05	3.07	250/3-600/3; 250/4-300/4 ACWU90: 1500/1; 500/2	2, 2-1/2
CI2174	3	2.25	3.57	350/3-600/3; 4/0/4-300/4 ACWU90: 1500/1; 500/2	2-1/2, 3
Two Screw Fitting (Aluminum)					
CI4000	4	4.40	4.55	—	4

See specification guide section for dimensions (D38-D39).



Cat. No.	Trade Size (in.)	Description
Cable Lok One-Screw Fittings (Galvanized Steel)		
XC-730 *	1/2	Single Connector
XC-731	1/2	Single Connector
XC-732	3/4	Single Connector
XC-7300	1/2	Duplex Connector

* Not CSA certified



XC-730

Cable Type	XC-730 1/2 in. Single	XC-731 1/2 in. Single	XC-732 3/4 in. Single	XC-7300 1/2 in. Duplex
Conduit / Cable Selection Guide				
AC Aluminum	14/2; 14/3; 14/4 12/2; 12/3; 12/4	14/2; 14/3; 14/4 12/2; 12/3; 12/4	10/4 8/2; 8/3 6/2	14/2; 14/3; 14/4 12/2; 12/3; 12/4
Flexible Conduit	3/8	—	1/2	3/8



XC-130



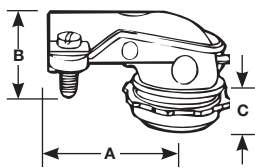
Cat. No.	Description
Snap-In Fitting for MC Cable – Steel	
XC-130	Steel Snap-In Fitting for MC Cable (14-2 + G to 10-3 + G)

Specification Guide

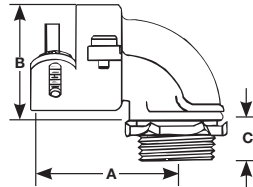
Cable Connectors



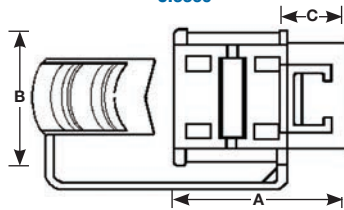
CI2210 / CI2236



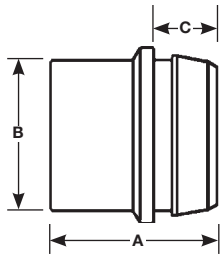
CI2238 / CI2240



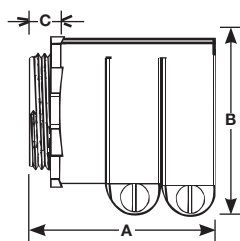
CI3360



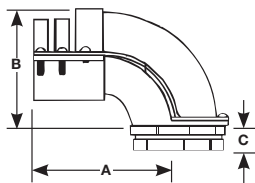
CI4004



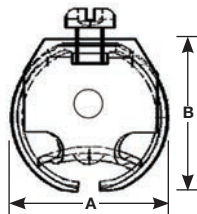
CI4000



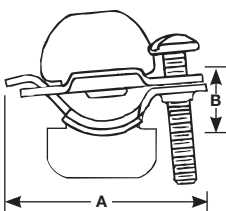
CI4090



CI4040



CI9049



Cat. No.	Trade Size	Clamping Range		Dimensions		
		Min.	Max.	A	B	C
90° Connectors (Zinc Alloy)						
CI2210	3/8	0.40	0.63	1-3/8	3/4	3/8
CI2211	1/2	0.65	0.97	1-11/16	1-1/16	3/8
CI2214	3/4	0.77	1.12	1-3/4	1-1/8	1/2
CI2216	1	1.10	1.57	2	1-5/8	5/8
CI2218	1-1/4	1.27	1.75	3-3/8	2-1/8	5/8
CI2234	1-1/2	1.70	2.15	5-1/4	3-1/4	3/4
CI2236	2	2.00	2.62	5-3/8	3-1/4	3/4
CI4090	4	4.17	4.62	8-1/4	6	1
90° Connectors (Aluminum)						
CI2238	2-1/2	2.50	3.08	6-1/4	5-1/2	3/4
CI2240	3	2.95	3.55	7-1/4	6-5/8	3/4
Nonmetallic Connector						
CI3360	1/2	0.30	0.60	1-5/16	1-1/16	7/16
Two Screw Connector (Aluminum)						
CI4000	4	4.40	4.55	4-7/8	5-3/4	7/8
Nonmetallic Connector						
CI4004	1/2	0.21	0.42	15/16	7/8	3/8
One Screw Connectors (Steel)						
CI4040	3/8	0.19	0.57	15/16	7/8	—
CI9049	3/8	0.13	0.37	1-3/8	5/16	—

Technical improvements are constantly taking place in the electrical industry. Cable manufacturers are changing their products from time to time. Accordingly, it is strongly suggested that you verify the cable size with the cable manufacturer prior to selecting a fitting.