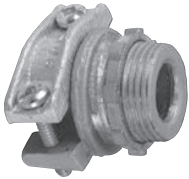


Armoured Cable / Flexible Conduit

Fittings



CI2104 / CI2124



Zinc Die Cast Locknut

CI2163



Zinc Die Cast Locknut

CI2166 / CI2172



Zinc Die Cast Locknut

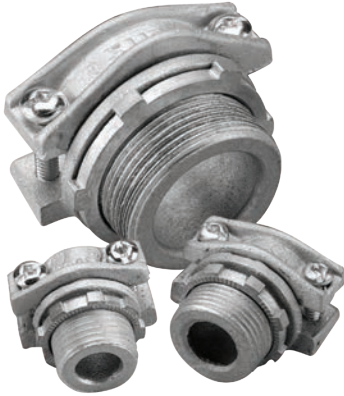
Cat. No.	Trade Size (in.)	Clamping Range (in.)		Suggested Application AC90 (BX)	Flex. Conduit
		Min.	Max.		
Two Screw Fittings (Cast Aluminium Body and Clamp)					
CI2104	1/2	0.45	0.59	14/2-10/2; 14/3-10/3; 14/4-12/4 ACWU90: 10/2; 12/3-10/3; 12/4; 12/5	5/16
CI2106	3/4	0.55	0.78	10/2-8/2; 10/3-8/3; 12/4-10/4 ACWU90: 3/1-2/1; 8/2; 10/3-8/3; 10/4; 12/5	3/8-7/16
CI2108	1	0.69	1.01	1/0/1-2/0/1; 8/2-6/2; 8/3-6/3; 8/4 ACWU90: 3/1-3/0/1; 6/2-4/2; 8/3-4/3; 8/4-6/4	1/2
CI2110	1-1/4	0.84	1.33	1/0/1-350/1; 6/2-2/2; 6/3-2/3; 8/4-4/4 ACWU90: 1/0/1-400/1 6/2-1/2; 6/3-2/3; 8/4-2/4	3/4
CI2112	1-1/2	1.06	1.57	4/0/1-600/1; 2/2-1/2; 4/3-2/0/3; 4/4-1/4 ACWU90: 4/0/1-600/1; 1/0/2-3/0/2; 4/3-2/0/3; 6/4-1/0/4	1
CI2116	2	1.38	2.06	500/1-1000/1; 1/0/3-300/3; 1/4-3/0/4 ACWU90: 500/1-1000/1; 2/0/2-350/2; 1/0/3-300/3; 1/4-4/0/4	1-1/4, 1-1/2
CI2120	2-1/2	1.95	2.47	400/3 - 500/3 300/4 - 500/4	1-1/2, 2
CI2124	3	2.25	3.57	500/4 - 750/4	2, 2-1/2
One Screw Fitting (Zinc Alloy)					
CI2163	3/8	0.35	0.61	14/2-10/2; 14/3-10/3; 14/4-12/4	3/8
One Screw Fittings (Aluminum)					
CI2166	1/2	0.50	0.90	12/2-8/2; 12/3-8/3; 14/4-10/4	1/2
CI2167	3/4	0.71	1.10	1/0/1-4/0/1; 6/2-4/2; 8/3-3/3; 8/4-6/4	3/4
CI2169	1	1.16	1.40	250/1-300/1; 2/3; 4/4	1
CI2170	1-1/4	1.32	1.77	400/1-600/1; 1/2; 1/3-2/0/3; 1/4	1-1/4
CI2171	1-1/2	1.77	2.05	1000/1; 4/0/3 ACWU90: 1000/1; 4/0/3; 3/0/4	1-1/2
CI2172	2	2.10	2.54	350/3-400/3 ACWU90: 1500/1; 500/2; 350/3-400/3; 250/4-300/4	2

Also suitable for ACWU90 (of equivalent diameters) in dry locations. CI2104/CI2116 fittings may also be used for RA90 cables of equivalent diameters. A non-ferrous connector and locknut must be used to terminate a single conductor cable when nominal current exceeds 200 A

NOTE: 3/8 in. trade size fitting require a 1/2 in. knockout

Technical improvements are constantly taking place in the electrical industry. Cable manufacturers are changing their products from time to time. Accordingly, it is strongly suggested that you verify the cable size with the cable manufacturer prior to selecting a fitting. See specification guide section for dimensions (D38-D39).

Non-Watertight Fittings – Two-Screw Fittings



These two-screw fittings have a wide array of industrial applications in dry locations. These fittings are designed to accommodate a wide range of cables and provide a means to terminate at junction boxes, control centres, panel boards and enclosures for motor control and electrical distribution equipment.



Cat. No.	Trade Size (in.)	KO Size (in.)	Dia. Over Cable Jacket (in.)		Throat (in.)	Dimensions (in.)	
			Min.	Max.		Overall Width	Overall Length
Aluminum							
XC-280	3/8	1/2	0.18	0.64	—	—	—
CI2104	1/2	1/2	0.45	0.59	0.47	1-3/8	1-3/16
CI2106	3/4	3/4	0.55	0.78	0.62	1-11/16	1-3/8
CI2108	1	1	0.69	1.01	0.79	1-15/16	1-1/2
CI2110	1-1/4	1-1/4	0.84	1.33	1.03	2-3/8	1-1/2
CI2112	1-1/2	1-1/2	1.06	1.57	1.31	2-3/4	1-9/16
CI2116	2	2	1.38	2.06	1.75	3-1/4	1-3/4
CI2120	2-1/2	2-1/2	1.95	2.47	2.10	3-7/8	1-7/8
CI2124	3	3	2.25	3.15	2.87	4-5/8	1-15/16

Materials

Two-screw fittings are made in sand-cast, copper-free aluminum (0.4% or less), for single or multi conductor cables

Sizes

Standard trade sizes from 1/2 to 2 inches are available for use with cables that have outside jacket diameters of 0.18 to 3.15 inches

Design

Two-screw fittings are specifically designed to accept a large range of armour cable with or without PVC external jacket with the proper throat acting as an armour stop

Certifications

These aluminum non-watertight fittings are CSA certified for ordinary locations for armoured cables with or without PVC jacket for DRY LOCATION only, including:

- Teck Cables
- Aluminum Sheathed (corrugated) and Type RA Cables
- Communication or Instrumentation Cables

The XC-280, CI-2120 and CI2124 are CSA certified for ORDINARY LOCATIONS only for use with armoured cables only

