

Armoured Cable / Flexible Conduit

Connectors



CI70



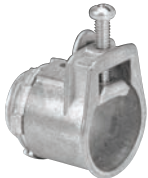
Zinc Die Cast Locknut

L-16



Zinc Die Cast Locknut

CI71 / CI73



Zinc Die Cast Locknut

CI2175



Zinc Die Cast Locknut

CI2275 **New**



Zinc Die Cast Locknut

CI2210 / CI2236



Zinc Die Cast Locknut

CI2238 / CI2240



Zinc Die Cast Locknut

CI4090



Zinc Locknut

Cat. No.	Trade Size (in.)	Clamping Range (in.)		Suggested Application AC90 (BX)	Flex. Conduit
		Min.	Max.		
One Screw Fittings (Zinc Alloy)					
L-16	3/8	0.12	0.63	14/2-10/2-14/3-10/3-14/4-10/4	5/16-3/8
CI70	3/8	0.13	0.70	14/2, 12/2, 10/2, 14/3, 12/3, 10/3, 14/4	3/8
CI71	1/2	0.33	0.95	14/2-10/2; 14/3-10/3; 14/4-8/4	5/16, 3/8, 1/2
CI72	3/4	0.60	1.15	6/2; 8/3-3/3; 8/4-3/4	1/2, 3/4
CI73	1	0.93	1.47	3/3-3/0/3; 2/4-1/4	3/4, 1
Duplex Fitting (Zinc Alloy)					
CI2175	3/8	0.15	0.65	14/2-10/2; 14/3-10/3; 14/4-12/4	3/8
CI2275* New	3/8	0.45	0.58	14/2-10/2; 14/3-10/3; 14/4-12/4	3/8
90° Fittings (Zinc Alloy)					
CI2210	3/8	0.40	0.63	14/2-10/2; 14/3-10/3 14/4-12/4	3/8
CI2211	1/2	0.65	0.97	8/2; 8/3; 10/4	1/2
CI2214	3/4	0.77	1.12	1/0/1-4/0/1; 6/2-4/2; 8/3-3/3; 8/4-6/4	3/4
CI2216	1	1.06	1.40	4/0/1-350/1; 2/2; 4/3-2/3; 6/4-4/4	1
CI2218	1-1/4	1.34	1.65	500/1-750/1; 1/3-3/0/3; 1/4-1/0/4	1-1/4
CI2234	1-1/2	1.70	2.15	600/1-1000/1; 2/0/3; 1/4-3/0/4	1-1/2
CI2236	2	1.51	2.47	600/1-1000/1; 2/0/3-400/3; 1/4-4/0/4	1-1/2 - 2
CI4090	4	4.17	4.62	—	4
90° Fittings (Aluminum)					
CI2238	2-1/2	2.50	3.08	600/3-750/3	2-1/2
CI2240	3	2.95	3.55	1000/3	3

Also suitable for ACWU90 (of equivalent diameters) in dry locations. A non-ferrous connector and locknut must be used to terminate a single conductor cable when nominal current exceeds 200 A.

* Suitable for AC90 and ACG90: Clamping range for AC90 is 0.45–0.58 and for ACG90 is 0.47–0.57.

NOTE: 3/8 in. trade size fittings require a 1/2 in. knockout

Technical improvements are constantly taking place in the electrical industry. Cable manufacturers are changing their products from time to time. Accordingly, it is strongly suggested that you verify the cable size with the cable manufacturer prior to selecting a fitting.

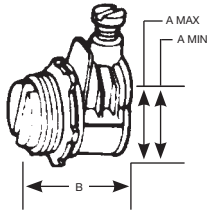
See specification guide section for dimensions (D38-D39).

Specification Guide

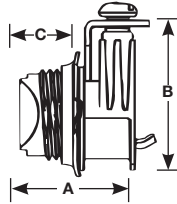
Cable Fittings



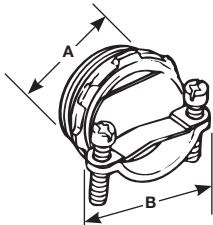
L-16



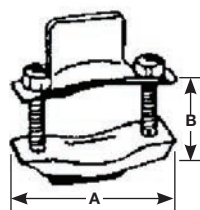
CI70 / CI72



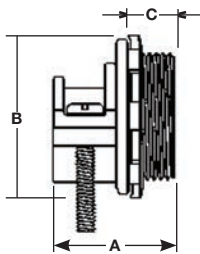
CI804 / CI816



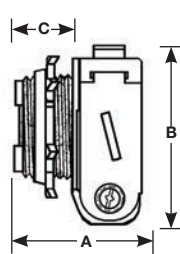
CI2060 / CI2061



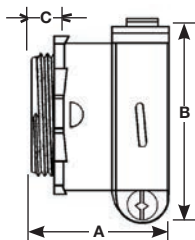
CI2104 / CI2116



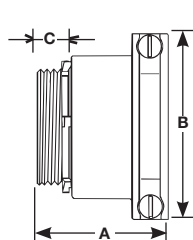
CI2163



CI2166 / CI2172



CI2173 / CI2174

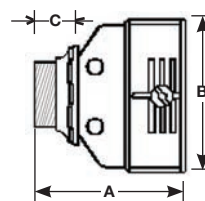


Cat. No.	Trade Size (in.)	Clamping Range (in.)		Dimensions (in.)		
		Min.	Max.	A	B	C
One Screw Connectors (Zinc Alloy)						
CI70	3/8	0.13	0.70	1	1-1/8	1/2
L-16	3/8	0.12	0.63	1	—	—
CI71	1/2	0.33	0.95	1-3/8	1-1/2	1/2
CI72	3/4	0.60	1.15	1-1/2	1-13/16	1/2
Two Screw Connectors (Zinc Alloy)						
CI804	3/8	0.18	0.64	7/8	1-1/16	—
CI806	3/4	0.41	0.82	1-3/8	1-3/16	
CI808	1	0.50	1.04	1-1/8	2	
CI810	1-1/4	0.56	1.06	1-5/16	2-3/16	
CI812	1-1/2	0.63	1.60	1-1/2	2-5/8	
CI816	2	0.86	2.06	1-9/16	3	
Two Screw Connectors (Steel)						
CI2060	3/8	0.11	0.60	1-1/2	5/8	—
CI2061	3/4	0.15	0.90	1-3/4	13/16	
Two Screw Connectors (Cast Aluminum Body and Clamp)						
CI2104	1/2	0.45	0.59	1-3/16	1-3/8	19/32
CI2106	3/4	0.55	0.78	1-3/8	1-11/16	5/8
CI2108	1	0.69	1.01	1-1/2	1-15/16	3/4
CI2110	1-1/4	0.84	1.33	1-1/2	2-3/8	9/16
CI2112	1-1/2	1.06	1.57	1-9/16	2-3/4	5/8
CI2116	2	1.38	2.06	1-3/4	3-1/4	3/4
One Screw Connector (Zinc Alloy)						
CI2163	3/8	0.35	0.61	1	1-5/16	7/16
One Screw Connectors (Aluminum)						
CI2166	1/2	0.50	0.90	1-9/16	1-11/16	7/16
CI2167	3/4	0.71	1.10	1-11/16	1-7/8	7/16
CI2169	1	1.16	1.50	2	2-1/2	1/2
CI2170	1-1/4	1.32	1.77	2-3/8	2-7/8	5/8
CI2171	1-1/2	1.77	2.05	2-1/2	3-1/4	5/8
CI2172	2	2.10	2.54	2-11/16	3-3/4	11/16
Two Screw Connectors (Aluminum)						
CI2173	2-1/2	2.05	3.07	3-1/8	4-9/16	3/4
CI2174	3	2.25	3.57	3-3/8	5-5/16	15/16
Duplex Connectors (Zinc Alloy)						
CI2175	3/8	0.15	0.65	9/16	5/8	3/8
CI2275*	3/8	0.45	0.58	2	1-9/16	13/16

* Suitable for AC90 and ACG90: Clamping range for AC90 is 0.45–0.58 and for ACG90 is 0.47–0.57.

Technical improvements are constantly taking place in the electrical industry. Cable manufacturers are changing their products from time to time. Accordingly, it is strongly suggested that you verify the cable size with the cable manufacturer prior to selecting a fitting.

CI2175



CI2275

