

Nonmetallic Sheathed Cable

Fittings



Cat. No.	Trade Size (in.)	Clamping Range (in.)		Suggested Application NMD90 (loomex)
		Min.	Max.	
One Screw Fittings (Aluminum)				
CI2166	1/2	0.50	0.90	8/3 – 6/3
CI2167	3/4	0.71	1.10	6/3 – 4/3
Duplex Fittings (Zinc Alloy)				
One Screw CI2175	3/8	0.15	0.65	14/2 – 10/2; 14/3 – 10/3
Nonmetallic Fittings				
CI3360	1/2	0.30	0.60	14/2 – 10/2; 14/3 – 10/3 2 cables: 14/2 – 12/2
CI4004†		0.21	0.42	14/2 – 12/2 – 10/2 – 14/3 – 12/3 – 10/3 2 cables: 2 x 14/2 – 2 x 12/2 1 x 14/2 + 1 x 12/2
W100LX-D		0.21	0.42	
CI4006*†	3/4	0.22	0.65	12/2 – 10/2 – 8/2 – 6/2 – 14/3 – 12/3 – 10/3 – 8/3 – 6/3 2 cables: 2 x 12/2 – 2 x 10/2 1 x 12/2 + 1 x 10/2
W101LX*		0.22	0.65	
One Screw Fittings (Steel)				
CI4040	3/8	0.19	0.57	14/2 – 10/2; 14/3 – 10/3 2 cables: 14/2
CI9049		0.13	0.37	14/2 – 10/2; 14/3 – 12/3

* For a complete catalogue number add suffix JAR 40, JAR 80 or JAR200 according to the desired quantity (i.e.: W101LX-JAR40, W101LX-JAR80 or W101LX-JAR200).

† UL Listed

CI2166 / CI2167



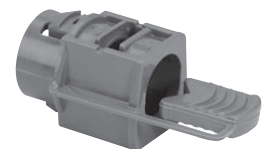
Zinc Die Cast Locknut

CI2175



Zinc Die Cast Locknut

CI3360



CI4004 / W100LX-D



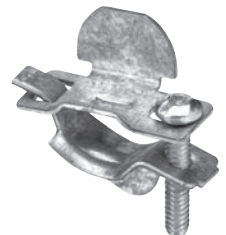
CI4006 / W101LX



CI4040



CI9049



See specification guide section for dimensions (D38-D39).

All NMD90 fittings are also suitable for NMWU90 of equivalent diameters, in dry locations. **NOTE:** 3/8 in. trade size connectors require a 1/2 in. knockout

Technical improvements are constantly taking place in the electrical industry. Cable manufacturers are changing their products from time to time. Accordingly, it is strongly suggested that you verify the cable size with the cable manufacturer prior to selecting a fitting.

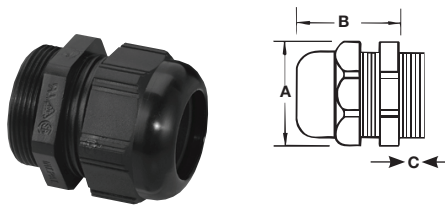
Flexible Cord

Nonmetallic Fittings

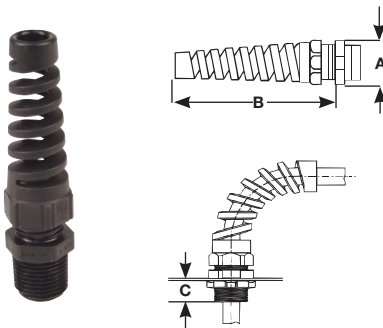
- Liquidtight and stainrelief (IP68)
- Corrosion resistant polyamide (nylon)
- Superior anti-vibration protection
- Acme threads on body prevent skipping and speed installation
- Indoor or outdoor use
- Quick installation
- Working temperatures:
Static: -40°C to 115°C
Dynamic: -20°C to 100°C
- Resistant to: Salt water, weak acids, gasoline, alcohol, oil, grease and common solvent



Straight fittings



90° fittings



CC-PG29-B / CC-PG36-B



Cat. No.	Trade Size (in.)	KO Size (in.)	Dia. Over Cable Jacket (in.)		Throat (in.)	Dimensions (in.)		
			Min.	Max.		A	B	C
"Skintight" Straight Cord Fittings (Nylon)								
CISLR-9-03*	3/8	3/8	0.069	0.187	0.375	3/4	31/32	17/32
CISL-9-03*	3/8	3/8	0.115	0.312	0.375	3/4	31/32	17/32
CISLR-13-04	1/2	1/2	0.170	0.450	0.500	15/16	1-3/32	5/8
CISL-13-04	1/2	1/2	0.230	0.546	0.500	1-1/16	1-7/32	5/8
CISLR-21-04	1/2	1/2	0.250	0.485	0.600	1-9/32	1-11/32	5/8
CISL-21-04	1/2	1/2	0.450	0.709	0.600	1-9/32	1-11/32	5/8
CISLR-21-06	3/4	3/4	0.250	0.485	0.667	1-5/16	1-11/32	5/8
CISL-21-06	3/4	3/4	0.450	0.709	0.667	1-5/16	1-11/32	5/8
90° "Skintight" Cord Fittings (Nylon)								
CISLFR-9-03*	3/8	3/8	0.065	0.230	0.375	3/4	2-7/16	7/32
CISLF-9-03*	3/8	3/8	0.105	0.315	0.375	3/4	2-7/16	7/32
CISLFR-13-04	1/2	1/2	0.095	0.290	0.500	15/16	3-15/32	5/8
CISLF-13-04	1/2	1/2	0.170	0.450	0.500	15/16	3-15/32	5/8
CISLFR-21-06	3/4	3/4	0.250	0.490	0.667	1-5/16	4-17/32	5/8
CISLF-21-06	3/4	3/4	0.435	0.705	0.667	1-5/16	4-17/32	5/8

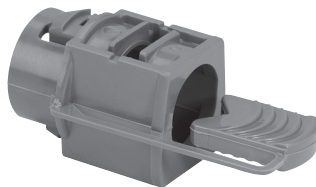
* UL Recognized



Cat. No.	Trade Size (in.)	Drill Hole (in.)	Dia. Over Cable Jacket (in.)		Throat (in.)	Dimensions (in.)	
			Min.	Max.		A	B
"Skintight" Metric Thread, Straight Cord Fittings (Nylon)							
CC-PG29-B	PG29	1-1/2	0.709	0.984	1.175	1-11/16	1-5/8
CC-PG36-B	PG36	1-7/8	0.866	1.260	1.436	2-1/8	2

Dry Location

CI3360



Cat. No.	Trade Size (in.)	KO Size (in.)	Clamping Range (in.)	
			Min.	Max.
Nonmetallic Fittings				
CI3360	1/2	1/2	0.30	0.60

Complete with metric locknut. Working temperatures: -30°C (-22°F) to 80°C (176°F)

CI1703-PL* / CI1706-PL*



Cat. No.	Trade Size (in.)
Nylon Locknuts	
CI1703-PL*	3/8
CI1704-PL*	1/2
CI1706-PL*	3/4

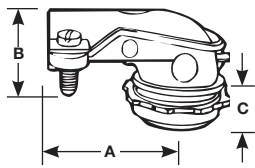
* Not CSA certified

Specification Guide

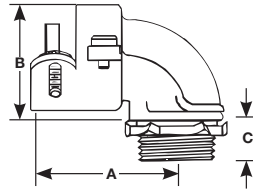
Cable Connectors



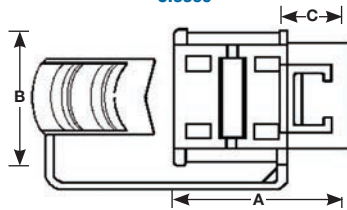
CI2210 / CI2236



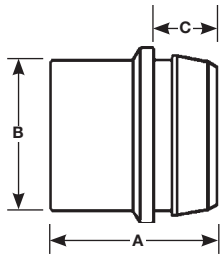
CI2238 / CI2240



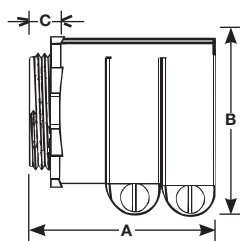
CI3360



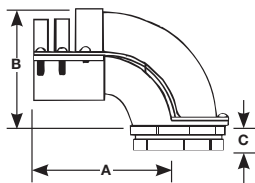
CI4004



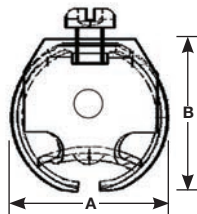
CI4000



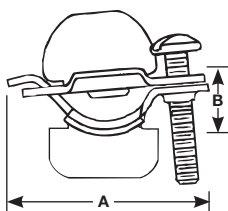
CI4090



CI4040



CI9049



Cat. No.	Trade Size	Clamping Range		Dimensions		
		Min.	Max.	A	B	C
90° Connectors (Zinc Alloy)						
CI2210	3/8	0.40	0.63	1-3/8	3/4	3/8
CI2211	1/2	0.65	0.97	1-11/16	1-1/16	3/8
CI2214	3/4	0.77	1.12	1-3/4	1-1/8	1/2
CI2216	1	1.10	1.57	2	1-5/8	5/8
CI2218	1-1/4	1.27	1.75	3-3/8	2-1/8	5/8
CI2234	1-1/2	1.70	2.15	5-1/4	3-1/4	3/4
CI2236	2	2.00	2.62	5-3/8	3-1/4	3/4
CI4090	4	4.17	4.62	8-1/4	6	1
90° Connectors (Aluminum)						
CI2238	2-1/2	2.50	3.08	6-1/4	5-1/2	3/4
CI2240	3	2.95	3.55	7-1/4	6-5/8	3/4
Nonmetallic Connector						
CI3360	1/2	0.30	0.60	1-5/16	1-1/16	7/16
Two Screw Connector (Aluminum)						
CI4000	4	4.40	4.55	4-7/8	5-3/4	7/8
Nonmetallic Connector						
CI4004	1/2	0.21	0.42	15/16	7/8	3/8
One Screw Connectors (Steel)						
CI4040	3/8	0.19	0.57	15/16	7/8	—
CI9049	3/8	0.13	0.37	1-3/8	5/16	—

Technical improvements are constantly taking place in the electrical industry. Cable manufacturers are changing their products from time to time. Accordingly, it is strongly suggested that you verify the cable size with the cable manufacturer prior to selecting a fitting.