

Nonmetallic Sheathed Cable

Fittings



Cat. No.	Trade Size (in.)	Clamping Range (in.)		Suggested Application
		Min.	Max.	
One Screw Fittings (Zinc Alloy)				
L-16	3/8	0.12	0.63	14/2, 10/2, 14/3, 10/3
CI70	3/8	0.13	0.70	14/2, 12/2, 10/2, 14/3, 10/3
CI71	1/2	0.33	0.95	10/2, 6/2, 12/3, 6/3
CI72	3/4	0.60	1.15	4/2-3/2; 4/3-3/3
CI73	1	0.93	1.47	2/2; 2/3
Two Screw Fittings (Zinc Alloy)				
CI804	3/8	0.18	0.64	14/2-10/2; 2# 14/2 and 2# 12/2
CI806	3/4	0.41	0.82	8/2-6/3
CI808	1	0.50	1.04	4/2-2/2; 8/3-4/3
CI810	1-1/4	0.56	1.06	4/2-2/2; 8/3-4/3
CI812	1-1/2	0.63	1.60	4/2-2/2; 8/3-2/3
CI816	2	0.86	2.06	3/2-2/2; 6/3-2/3
Two Screw Fittings (Steel)				
CI2060	3/8	0.11	0.60	14/2-10/2; 14/3-10/3
CI2061	3/4	0.15	0.90	10/2-6/2; 10/3-6/3
One Screw Fittings (Zinc Alloy)				
CI2163	3/8	0.35	0.61	10/3

CI70



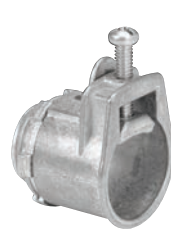
Zinc Die Cast Locknut

L-16



Zinc Die Cast Locknut

CI71 / CI73



Zinc Die Cast Locknut

CI804



Die Cast Locknut

CI806



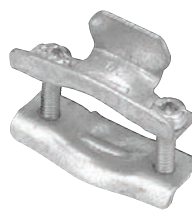
Zinc Die Cast Locknut

CI808 / CI816



Zinc Die Cast Locknut

CI2060 / CI2061



Zinc Die Cast Locknut

CI2163



Zinc Die Cast Locknut

See specification guide section for dimensions (D38-D39).

All NMD90 fittings are also suitable for NMWU90 of equivalent diameters, in dry locations. **NOTE:** 3/8 in. trade size connectors require a 1/2 in. knockout

Technical improvements are constantly taking place in the electrical industry. Cable manufacturers are changing their products from time to time. Accordingly, it is strongly suggested that you verify the cable size with the cable manufacturer prior to selecting a fitting.

Armoured Cable / Flexible Conduit

Connectors

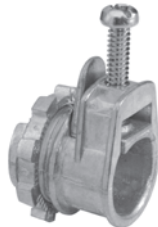


CI70



Zinc Die Cast Locknut

L-16



Zinc Die Cast Locknut

CI71 / CI73



Zinc Die Cast Locknut

CI2175



Zinc Die Cast Locknut

CI2275 **New**



Zinc Die Cast Locknut

CI2210 / CI2236



Zinc Die Cast Locknut

CI2238 / CI2240



Zinc Die Cast Locknut

CI4090



Zinc Locknut

Cat. No.	Trade Size (in.)	Clamping Range (in.)		Suggested Application AC90 (BX)	Flex. Conduit
		Min.	Max.		
One Screw Fittings (Zinc Alloy)					
L-16	3/8	0.12	0.63	14/2-10/2-14/3-10/3-14/4-10/4	5/16-3/8
CI70	3/8	0.13	0.70	14/2, 12/2, 10/2, 14/3, 12/3, 10/3, 14/4	3/8
CI71	1/2	0.33	0.95	14/2-10/2; 14/3-10/3; 14/4-8/4	5/16, 3/8, 1/2
CI72	3/4	0.60	1.15	6/2; 8/3-3/3; 8/4-3/4	1/2, 3/4
CI73	1	0.93	1.47	3/3-3/0/3; 2/4-1/4	3/4, 1
Duplex Fitting (Zinc Alloy)					
CI2175	3/8	0.15	0.65	14/2-10/2; 14/3-10/3; 14/4-12/4	3/8
CI2275* New	3/8	0.45	0.58	14/2-10/2; 14/3-10/3; 14/4-12/4	3/8
90° Fittings (Zinc Alloy)					
CI2210	3/8	0.40	0.63	14/2-10/2; 14/3-10/3 14/4-12/4	3/8
CI2211	1/2	0.65	0.97	8/2; 8/3; 10/4	1/2
CI2214	3/4	0.77	1.12	1/0/1-4/0/1; 6/2-4/2; 8/3-3/3; 8/4-6/4	3/4
CI2216	1	1.06	1.40	4/0/1-350/1; 2/2; 4/3-2/3; 6/4-4/4	1
CI2218	1-1/4	1.34	1.65	500/1-750/1; 1/3-3/0/3; 1/4-1/0/4	1-1/4
CI2234	1-1/2	1.70	2.15	600/1-1000/1; 2/0/3; 1/4-3/0/4	1-1/2
CI2236	2	1.51	2.47	600/1-1000/1; 2/0/3-400/3; 1/4-4/0/4	1-1/2 - 2
CI4090	4	4.17	4.62	—	4
90° Fittings (Aluminum)					
CI2238	2-1/2	2.50	3.08	600/3-750/3	2-1/2
CI2240	3	2.95	3.55	1000/3	3

Also suitable for ACWU90 (of equivalent diameters) in dry locations. A non-ferrous connector and locknut must be used to terminate a single conductor cable when nominal current exceeds 200 A.

* Suitable for AC90 and ACG90: Clamping range for AC90 is 0.45–0.58 and for ACG90 is 0.47–0.57.

NOTE: 3/8 in. trade size fittings require a 1/2 in. knockout

Technical improvements are constantly taking place in the electrical industry. Cable manufacturers are changing their products from time to time. Accordingly, it is strongly suggested that you verify the cable size with the cable manufacturer prior to selecting a fitting.

See specification guide section for dimensions (D38-D39).