

Rigid Conduit

Couplings



CI5164 / CI5168

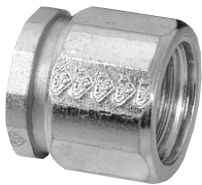


Cat. No.	Trade Size (in.)	
	EMT	Rigid
EMT / Rigid Couplings (Zinc Alloy)		
CI5164	1/2	1/2
CI5166	3/4	3/4
CI5168	1	1

Concrete-tight



CI7904 / CI7912



Cat. No.	Trade Size (in.)
3-piece Couplings (Machined steel—Zinc Galvanized)	
CI7904	1/2
CI7906	3/4
CI7908	1
CI7910	1-1/4
CI7912	1-1/2
EK-406	2