

Service Entrance Cable

Connectors and Entrance Heads



CI808 / CI816



Zinc Die Cast Locknut

CI806



Zinc Die Cast Locknut

CI804



Cat. No.	Trade Size (in.)	Clamping Range (in.)		Throat (in.)
		Min.	Max.	
Two Screw Fittings (Zinc Alloy)				
CI804	3/8	0.18	0.64	0.64
CI806	3/4	0.41	0.82	0.83
CI808	1	0.50	1.04	1.05
CI810	1-1/4	0.56	1.06	1.37
CI812	1-1/2	0.63	1.60	1.81
CI816	2	0.86	2.06	2.05

NOTE: 3/8 in. trade size connectors require a 1/2 in. knockout.



CIefa-1/2 / CIefa-4



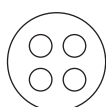

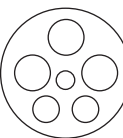
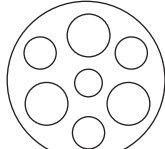
Cat. No.	Trade Size (in.)
Service Entrance Heads (Cast Aluminum) Rigid Conduit	
CIefa-1/2	1/2
CIefa-3/4	3/4
CIefa-1	1
CIefa-1 1/4	1-1/4
CIefa-1 1/2	1-1/2
CIefa-2	2
CIefa-2 1/2	2-1/2
CIefa-3	3
CIefa-3 1/2	3-1/2
CIefa-4	4

Trade Size (in.)	KO Dimensions (in.)		
	Small	Large	Center
1/2	0.312	—	—
3/4	0.375	0.400	—
1	0.438	0.500	—
1-1/4	0.438	0.625	—
1-1/2	0.610	0.750	0.400
2	0.750	1.000	0.525
2-1/2	0.875	1.300	1.000
3	1.125	1.750	1.125
3-1/2	1.125	1.750	1.125
4	1.125	1.750	1.125

CIeFSA-1/2 / CIeFSA-4



Cat. No.	Trade Size (in.)
Service Entrance Heads (Cast Aluminum) EMT	
CIeFSA-1/2	1/2
CIeFSA-3/4	3/4
CIeFSA-1	1
CIeFSA-1 1/4	1-1/4
CIeFSA-1 1/2	1-1/2
CIeFSA-2	2
CIeFSA-2 1/2	2-1/2
CIeFSA-3	3
CIeFSA-3 1/2	3-1/2
CIeFSA-4	4

KO Configuration	
 1/2 in.	 3/4 in. - 1-1/4 in.
 1-1/2 in., 2 in.	 2-1/2 in., 4 in.

Rigid Conduit

Accessories and Entrance Heads



CI1203 / CI1216

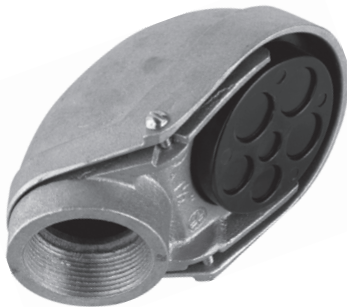


CI1503 / CI1548



Cat. No.	Trade Size (in.)	Max. EMT Dia. (in.)	Hole Size (in.)
One Hole Rigid Straps (Galvanized Steel)			
CI1203	3/8	0.68	1/4
CI1204	1/2	0.84	1/4
CI1206	3/4	1.05	1/4
CI1208	1	1.32	5/16
CI1210	1-1/4	1.66	7/16
CI1212	1-1/2	1.90	7/16
CI1216	2	2.38	9/16
Two Hole Rigid Straps (Galvanized Steel)			
CI1503	3/8	0.68	3/16
CI1504	1/2	0.84	3/16
CI1506	3/4	1.05	3/16
CI1508	1	1.32	3/16
CI1510	1-1/4	1.66	1/4
CI1512	1-1/2	1.90	1/4
CI1516	2	2.38	9/32
CI1520	2-1/2	2.88	3/8
CI1524	3	3.50	3/8
CI1528	3-1/2	4.00	1/2
CI1532	4	4.50	1/2
CI1540	5	5.56	1/2
CI1548	6	6.63	1/2

CIEFA-1/2 / CIEFA-4



Cat. No.	Trade Size (in.)
Service Entrance Heads (Cast Aluminum)	
CIEFA-1/2	1/2
CIEFA-3/4	3/4
CIEFA-1	1
CIEFA-1 1/4	1-1/4
CIEFA-1 1/2	1-1/2
CIEFA-2	2
CIEFA-2 1/2	2-1/2
CIEFA-3	3
CIEFA-3 1/2	3-1/2
CIEFA-4	4

Consult page D10 for technical specifications

CI7538



Cat. No.	Max. Flex. Conduit Dia. (in.)	Hole Size (in.)
One Hole Double Sided Strap (Galvanized Steel)		
CI7538*	1.05	3/16

* Any combination of 3/8 in., 1/2 in. and 3/4 in. EMT, rigid conduit, flexible conduit or teck cables