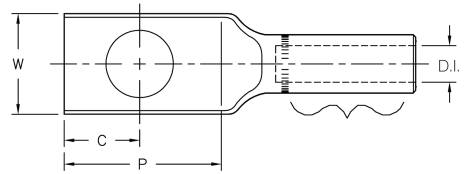


Aluminum Lugs

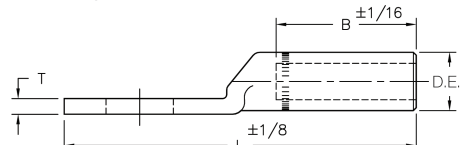
One-Hole CSA Die Lugs

- Use with aluminum and copper conductors
- Provides high strength and high-conductivity
- Prevents oxidation and keeps out moisture
- Easy identification
- Meet or exceed ANSI C119.4 specifications



Marking Information _____
 Cat. No. _____
 Wire Size _____
 Die Size _____

of crimps and locations to be determined according to connector



Cat. No.	Wire Size	CSA Die	O.D.	I.D.	Dimensions					
					L	B	P	W	C	T
GLE 2-48	2 str.-Compr-CPT	22	0.635	0.340	3.13	1.37	1.31	0.88	0.63	0.20
GLE 1/0-48	1/0 str.-Compr-CPT		0.640	0.420						0.21
GLE 2/0-48	2/0 str.-Compr-CPT	24	0.840	0.503	3.44	1.37	1.31	1.14	0.63	0.28
GLE 3/0-48	3/0 str.-Compr-CPT			0.547						0.597
GLE 4/0-48	4/0 str.-Compr-CPT	24-6T	1.000	0.620	3.75	1.63	1.31	1.25	0.63	0.36
GLE 250-48	250 str.-Compr-CPT	26		0.670						0.34
GLE 300-48	300 str.-Compr-CPT	26-12T	1.189	0.730	5.00	2.50	1.50	1.75	0.88	0.52
GLE 350-48	350 str.-Compr-CPT	28		0.836						0.56
GLE 500-48	500 str.-Compr-CPT	28-12T	1.187	0.880	5.88	3.00	1.88	1.75	0.88	0.56
GLE 500-48-30	500 str.-Compr-CPT	30-12T		1.031						0.56
GLE 750-48	750 str.-Compr-CPT	30	1.438	1.031	5.88	3.00	1.88	1.75	0.88	0.56

Finish: Tin-plated optional, use suffix "-TN".
 Material: E.C. Grade Aluminum.
 Connector bores are coated with HM 53 an oxide inhibiting compound and capped.
 Mounting holes sized for 1/2 in. bolts (9/16 hole size).
 Optional suffix "-38" for 3/8 bolts (13/32 hole size).