

## 4 in. Square Boxes

### Conduit Knockouts



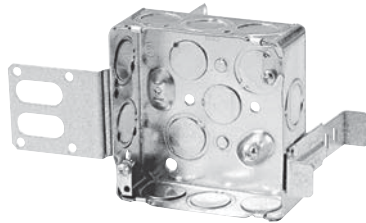
**BC52151-K**

Concentric knockouts.



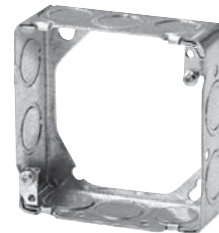
**CI52151-KSB**

Concentric knockouts.



**BC52151-KSSX**

Concentric knockouts. "Wraparound" bracket for 2-1/2 in. and 3-5/8 in. steel studs. With integral support bracket.



**BC54171-LSSAX**

Concentric knockouts.



Cat. No.	Volume (Cu. in.)	Features		Knockouts			
		Bracket	Raised Ground Screw	1/2 in. sides	1/2 in. bottom	3/4 in. sides	3/4 in. bottom
<b>1-1/2 in. Deep</b>							
<b>BC52151-K</b>	21.0	-	yes	10	4	6	2
<b>CI52151-KSB</b>	21.0	"SB"	yes	8	4	4	2
<b>BC52151-KSSX</b>	21.0	"SSX"	yes	7	4	3	2
<b>BC53151-K</b>	21.0	-	-	10	-	6	-

## Steel Stud Boxes

### 4 in. and 4-11/16 in. Square Boxes and 4 in. Octagonal Boxes



Cat. No.	Volume (Cu. in.)	Clamps	Knockouts					Pryouts sides
			1/2 in. sides	1/2 in. bottom	3/4 in. sides	3/4 in. bottom	1 in. sides	
<b>4 in. Square Boxes – 1-1/2 in. Deep</b>								
BC52151-KSSX	21.0	-	7	4	3	2	-	-
BC52151-KSSX-NG*	21.0	-	7	4	3	2	-	-
<b>4 in. Square Boxes – 2-1/8 in. Deep</b>								
BC52171-KSSX	30.0	-	7	4	3	2	-	-
BC52171-KSSX-NG*	30.0	-	7	4	3	2	-	-
CI52171-KSSX-1	30.0	-	7	4	3	2	-	-
CI52171-1-SSX-1	30.0	-	-	4	-	2	2	-
<b>4-11/16 in. Square Boxes – 2-1/8 in. Deep</b>								
CI72171-KSSX	42.0	-	8	4	4	2	-	-
<b>4 in. Octagonal Boxes – 1-1/2 in. Deep</b>								
CI54151-KSSX	15.0	-	2	4	2	2	-	-
BC54151-LSSAX	15.0	loomex/BX	-	1	-	-	-	4
BC54151-LSSAX-NG*	15.0	loomex/BX	-	1	-	-	-	4
<b>4 in. Octagonal Boxes – 2-1/8 in. Deep</b>								
CI54171-KSSX	21.0	-	2	4	2	2	-	-
<b>4 in. Square – 2-1/8 in. Deep</b>								
BC52171-KSSXHVKIT	33.6	"SSX"	6	-	2	-	-	-

\* With raised ground screws. New generation robust adjustable support.

Cat. No.	Volume (Cu. in.)	Features		Knockouts		
		Brackets	Raised Ground Screw	1/2 in. ends	1/2 in. bottom	1/2 in. sides
<b>4 in. Square Boxes – 1-1/2 in. Deep</b>						
BC1110-SSX	16.5	"SSX"	oui	7	4	3