

## 4 in. Square Boxes

### Conduit Knockouts



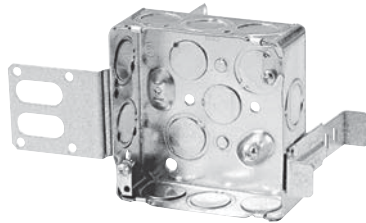
**BC52151-K**

Concentric knockouts.



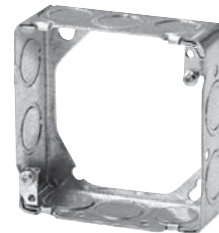
**CI52151-KSB**

Concentric knockouts.



**BC52151-KSSX**

Concentric knockouts. "Wraparound" bracket for 2-1/2 in. and 3-5/8 in. steel studs. With integral support bracket.



**BC54171-LSSAX**

Concentric knockouts.



Cat. No.	Volume (Cu. in.)	Features		Knockouts			
		Bracket	Raised Ground Screw	1/2 in. sides	1/2 in. bottom	3/4 in. sides	3/4 in. bottom
<b>1-1/2 in. Deep</b>							
<b>BC52151-K</b>	21.0	-	yes	10	4	6	2
<b>CI52151-KSB</b>	21.0	"SB"	yes	8	4	4	2
<b>BC52151-KSSX</b>	21.0	"SSX"	yes	7	4	3	2
<b>BC53151-K</b>	21.0	-	-	10	-	6	-

## Extension Rings

### Conduit Knockouts



Cat. No.	Volume (Cu. in.)	Dimensions H x W x D (in.)	Knockouts		
			1/2 in. sides	3/4 in. sides	1 in. sides
<b>4 in. Octagonal</b>					
<b>BC55151-K</b>	15.0	4 x 4 x 1-1/2	4	2	-
<b>CI55171-K</b>	21.0	4 x 4 x 2-1/8	4	2	-
<b>4 in. Round</b>					
<b>BCOBEX</b>	5.0	4 x 4 x 1/2	-	-	-
<b>4 in. Square</b>					
<b>BC53151-K</b>	21.0	4 x 4 x 1-1/2	10	6	-
<b>BC53171-K</b>	30.0	4 x 4 x 2-1/8	10	6	-
<b>4-11/16 in. Square</b>					
<b>BC73151-K</b>	30.0	4-11/16 x 4-11/16 x 1-1/2	10	6	-
<b>BC73171-K</b>	42.0	4-11/16 x 4-11/16 x 2-1/8	10	6	-
<b>Utility</b>					
<b>BC1110-R</b>	16.5	4 x 2-3/8 x 1-7/8	6	-	-
<b>BC2020-R</b>	14.0	4 x 2-1/8 x 1-7/8	6	-	-
<b>Concrete</b>					
<b>CI53171-ER</b>	30.0	4 x 4 x 2-1/8	10	6	-