

4 in. Square Boxes

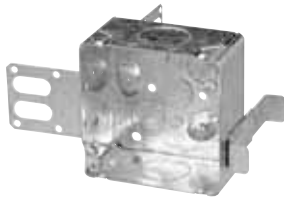
Conduit Knockouts



BC52171-HV-KIT



BC52171-KSSXHVKIT



CI52171-1-SSX-1

"Wraparound" bracket for 2-1/2 in. and 3-5/8 in. steel studs. With integral support bracket. Present for 2 x 1/2 in. drywall thickness.



CI52171-1



BC52171-K

Concentric knockouts.



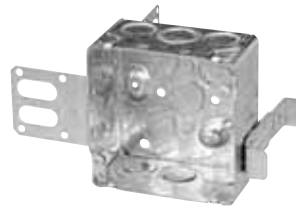
CI52171-KSB

Concentric knockouts.



BC52171-KSSX

Concentric knockouts. "Wraparound" bracket for 2-1/2 in. and 3-5/8 in. steel studs. With integral support bracket. Present for 1 x 1/2 in. drywall thickness.



CI52171-KSSX-1

Concentric knockouts. "Wraparound" bracket for 2-1/2 in. and 3-5/8 in. steel studs. With integral support bracket. Present for 2 x 1/2 in. drywall thickness.



BC53171-K

Concentric knockouts.



Cat. No.	Volume (Cu. in.)	Features		Knockouts				
		Bracket	Raised Ground Screw	1/2 in. sides	1/2 in. bottom	3/4 in. sides	3/4 in. bottom	1 in. sides
2-1/8 in. Deep								
BC52171-HV-KIT	33.6	-	yes	6	-	2	-	-
BC52171-KSSXHVKIT	33.6	"SSX"	yes	6	-	2	-	-
CI52171-1	30.0	-	yes	-	4	-	2	4
CI52171-1-SSX-1	21.0	"SSX"	yes	-	4	-	2	2
BC52171-K	30.0	-	yes	10	4	6	2	-
CI52171-KSB	30.0	"SB"	yes	8	4	4	2	-
BC52171-KSSX	30.0	"SSX"	yes	7	4	3	2	-
CI52171-KSSX-1	30.0	"SSX"	yes	7	4	3	2	-
BC53171-K	30.0	-	-	10	-	6	-	-

347 Volt Boxes

Boxes and Kits



BC52171-HV-KIT



BC52171-KSSXHVKIT



CI1204-1-HV



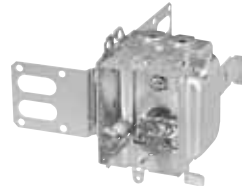
CI1204-2-HV



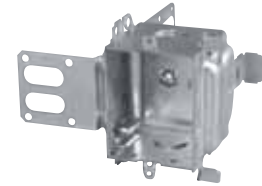
CI1204-LA-HV



CI1204-3/4-SSX-HV



CI1204-LSSAX-HV



CI1204-SSX-HV



Cat. No.	Volume (Cu. in.)	Number of Gangs	Dimensions H x W x D (in.)	Features			Knockouts 1/2 in. ends	Pryouts ends
				Ears	Clamps	Brackets		
2-1/2 in. Deep — Gangable								
BC52171-HV-KIT	33,6	1	4 x 4 x 2-1/8	-	-	-	2	-
BC52171-KSSXHVKIT	33,6	1	4 x 4 x 2-1/8	-	-	-	2	-
CI1204-1-HV	16,0	1	3 x 2-1/4 x 2-1/2	recessed	-	-	2	-
CI1204-2-HV	32,0	2	3 x 4-1/2 x 2-1/2	recessed	-	-	4	-
CI1204-3/4-SSX-HV	16,0	1	3 x 2 x 2-1/2	-	-	“SSX”	-	-
CI1204-LA-HV	16,0	1	3 x 2-1/4 x 2-1/2	flush	BX	-	-	4
CI1204-LSSAX-HV	16,0	1	3 x 2-1/4 x 2-1/2	-	BX	“SSX”	-	4
CI1204-SSX-HV	16,0	1	3 x 2-1/4 x 2-1/2	-	-	“SSX”	2	-
CI1204-SS1X-HV	16,0	1	3 x 2-1/4 x 2-1/2	-	-	“SSX”	2	-
CI1204-LSSAX-HV-1	16,0	1	3 x 2-1/4 x 2-1/2	-	BX	“SSX”	-	4

Note: All HV boxes have tapped holes spaced 3-17/32 in. to accommodate 347 Volt switches
 CI1204-2-HV includes CIHVP partition
 On multigang boxes lateral spacing 2-1/4 in.
 When ganged, CIHVP partition must be installed between spacers

Steel Stud Boxes

4 in. and 4-11/16 in. Square Boxes and 4 in. Octagonal Boxes



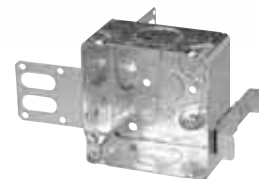
BC52151-KSSX



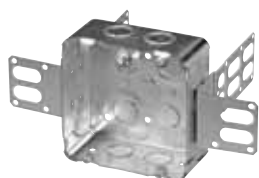
BC52171-KSSX



CI52171-KSSX-1



CI52171-1-SSX-1



CI72171-KSSX



CI54151-KSSX



BC54151-LSSAX



BC1110-SSX



CI54171-KSSX



BC52171-KSSXHVKIT



Cat. No.	Volume (Cu. in.)	Features		Knockouts					Pryouts sides
		Clamps	Raised Ground Screw	1/2 in. sides	1/2 in. bottom	3/4 in. sides	3/4 in. bottom	1 in. sides	
4 in. Square Boxes – 1-1/2 in. Deep									
BC52151-KSSX	21.0	-	yes	7	4	3	2	-	-
4 in. Square Boxes – 2-1/8 in. Deep									
BC52171-KSSX	30.0	-	yes	7	4	3	2	-	-
CI52171-KSSX-1	30.0	-	yes	7	4	3	2	-	-
CI52171-1-SSX-1	30.0	-	yes	-	4	-	2	2	-
4-11/16 in. Square Boxes – 2-1/8 in. Deep									
CI72171-KSSX	42.0	-	yes	8	4	4	2	-	-
4 in. Octagonal Boxes – 1-1/2 in. Deep									
CI54151-KSSX	15.0	-	yes	2	4	2	2	-	-
BC54151-LSSAX	15.0	loomex/BX	-	-	1	-	-	-	4
4 in. Octagonal Boxes – 2-1/8 in. Deep									
CI54171-KSSX	21.0	-	yes	2	4	2	2	-	-
4 in. Square – 2-1/8 in. Deep									
BC52171-KSSXHVKIT	33.6	"SSX"	yes	6	-	2	-	-	-

Cat. No.	Volume (Cu. in.)	Features		Knockouts		
		Brackets	Raised Ground Screw	1/2 in. ends	1/2 in. bottom	1/2 in. sides
4 in. Square Boxes – 1-1/2 in. Deep						
BC1110-SSX	16.5	"SSX"	yes	7	4	3