

Compression Connectors for Copper Conductor

Reduce your installation time and labor costs!

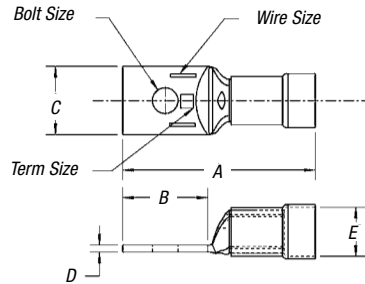


Insulated Lugs

Now you can have all of the benefits of Thomas & Betts' industry-leading Blackburn® lugs featuring the Color-Keyed® system — without the time-consuming job of insulating them after installation. These lugs come fitted with a translucent nylon sleeve that provides excellent dielectric strength, while still enabling easy viewing of the color-coding on the barrel. In addition to the standard catalog numbers listed here for one- and two-hole lugs, a variety of custom options makes this the broadest offering of insulated lugs available on the market!



- Translucent nylon insulator provides easy viewing of die code/color
- Use with #8 AWG to 250 kcmil copper conductors
- Available in one- and two-hole configurations with standard-length barrel
- Variety of options available — finish, tongue width and angle, bolt hole size/spacing and more
- Easy to install with standard Blackburn® compression tools TBM6S, 25000, 13642M or 13400 with adapter



Specifications

- Material — Lugs: Seamless copper tubing with electrotin plate finish
- Material — Insulators: Injection-molded nylon
- Temperature Rating: 105° C max.
- Voltage Rating: 600 volts max. (1,000 volts max. in signs and fixtures)
- Listings: UL® Listed, CSA Certified



CAT. NO.	WIRE SIZE	BOLT SIZE	DIMENSIONS (IN.)					HOLE SPACING	DIE FOR TBM6S OR 25000 TOOL	DIE FOR 13642M TOOL
			A	B	C	D	E			
One-Hole Standard-Barrel Nylon-Insulated Lugs										
54104I	#8 AWG	#10	1.49	.50	.39	.08	.35	—	11821-CK	21707M-CK
54105I	#6 AWG	¼"	1.58	.53	.44	.07	.45	—	11822-CK	21708M-CK
54106I	#4 AWG	¼"	1.76	.60	.55	.09	.53	—	11823-CK	21709M-CK
54108I	#1 AWG	¼"	2.06	.65	.68	.11	.60	—	11824-CK	21710M-CK
54109I	1/0 AWG	⅜"	2.36	.93	.75	.13	.64	—	11825-CK	21711M-CK
54110I	2/0 AWG	⅜"	2.43	.93	.83	.13	.69	—	11826-CK	21712M-CK
54111I	3/0 AWG	⅜"	2.54	.93	.92	.13	.77	—	11827-CK	21713M-CK
54112I	4/0 AWG	⅜"	2.75	.93	1.03	.14	.80	—	11828-CK	21714M-CK
54113I	250 kcmil	½"	3.19	1.25	1.13	.14	.88	—	11829-CK	21715M-CK
Two-Hole Standard-Barrel Nylon-Insulated Lugs										
54204I	#8 AWG	#10	2.21	1.18	.42	.08	.35	.625	11821-CK	21707M-CK
54205I	#6 AWG	¼"	2.32	1.28	.44	.08	.45	.625	11822-CK	21708M-CK
54206I	#4 AWG	¼"	2.40	1.28	.52	.10	.53	.625	11823-CK	21709M-CK
54208I	#1 AWG	¼"	2.69	1.28	.68	.11	.60	.625	11824-CK	21710M-CK
54209I	1/0 AWG	⅜"	3.36	1.93	.75	.13	.64	1.000	11825-CK	21711M-CK
54210I	2/0 AWG	⅜"	3.43	1.93	.83	.13	.69	1.000	11826-CK	21712M-CK
54211I	3/0 AWG	⅜"	3.45	1.81	.94	.14	.77	1.000	11827-CK	21713M-CK
54212I	4/0 AWG	⅜"	3.75	1.93	1.03	.14	.80	1.000	11828-CK	21714M-CK
54213I	250 kcmil	½"	3.87	1.93	1.13	.14	.88	1.000	11829-CK	21715M-CK