

Compression Connectors for Copper Conductor

Cast Copper Two-Hole Lugs for Code Copper Cable 600V to 35kV

Material: Cast Copper

Finish: Electro Tin Plate

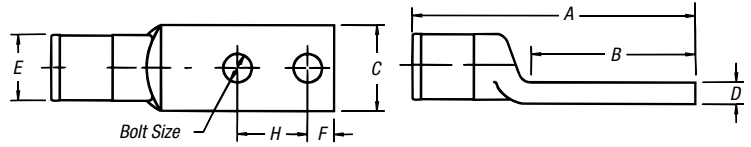


Figure 1

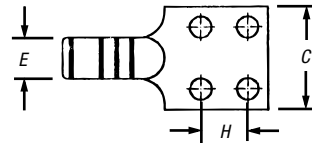


Figure 2



CAT. NO.	CODE CABLE SIZE	BOLT G SIZE (IN.)	DIMENSIONS (IN.)							DIE CODE	NO. OF CRIMPS		
			A APPROX.	B	C	D	E	F	H		12 TON	15 TON	40 TON
256-30695-1055	#14-10 AWG	1/4	2	1 1/16	1/2	1/8	3/8	1/4	5/8-3/4	29	1	1	1
53204	#8 AWG	1/4	2	1 1/16	1/2	3/32*	3/8	1/4	5/8	29	1	1	1
53205	#8 AWG	1/4	2	1 1/16	1/2	1/8	3/8	1/4	5/8	29	1	1	1
53206	#4 AWG	1/4	2	1 1/16	1/2	1/8	3/8	1/4	5/8	29	1	1	1
53207	#2 AWG	1/4	3	2	3/4	1/8	1 1/32	1/2	3/4	45	1	1	1
53208	#1 AWG	1/4	3	2	3/4	1/4	1 1/32	1/2	1	45	1	1	1
53209	1/0 AWG	3/8	3	2	3/4	1/4	1 1/32	1/2	1	45	1	1	1
53210	2/0 AWG	3/8	4 1/16	3	3/4	3/16*	2 1/32	5/8	1 3/4	66	1	1	1
53211	3/0 AWG	1/2	4 1/16	3	1	3/32	2 1/32	5/8	1 3/4	66	1	1	1
53212	4/0 AWG	1/2	4 1/16	3	1	3/32	2 1/32	5/8	1 3/4	66	1	1	1
53213	250 kcmil	1/2	4 1/16	3	1 1/16	3/16*	1 1/16	5/8	1 3/4	76	1	1	1
53214	300 kcmil	1/2	4 1/16	3	1 1/16	3/16	1 1/16	5/8	1 3/4	76	1	1	1
53215	350 kcmil	1/2	5 1/16	3 1/2	1 3/8	1/4*	1 1/32	5/8	1 3/4	99	2	1	1
53216	400 kcmil	1/2	5 1/16	3 1/2	1 3/8	3/8	1 1/32	5/8	1 3/4	99	2	1	1
53218	500 kcmil	1/2	5 1/16	3 1/2	1 3/8	3/8	1 1/32	5/8	1 3/4	99	2	1	1
53220M	600 kcmil	1/2	5 1/16	3 1/2	1 3/8	1 1/32	1 23/64	5/8	1 3/4	112	2	1	1
53222M	700 kcmil	1/2	5 1/16	3 1/2	1 3/8	± 1/32	1 23/64	5/8	1 3/4	112	2	1	1
53223M	750 kcmil	1/2	5 1/16	3 1/2	1 3/8	± 1/32	1 23/64	5/8	1 3/4	112	2	1	1
53269	1325/24	1/2	5 1/2	3 1/2	1 3/8	1 1/32	1 3/8	5/8	1 3/4	107	2	1	1
53224	800 kcmil	1/2	6	3 1/2	1 7/8	5/16*	1 1/16	5/8	1 3/4	130	—	1	1
53226	900 kcmil	1/2	6	3 1/2	1 7/8	1 1/32	1 1/16	5/8	1 3/4	130	—	1	1
53228	1000 kcmil	1/2	6	3 1/2	1 7/8	1 1/32	1 1/16	5/8	3/4	130	—	1	1
53273	1111 kcmil 2750/24	1/2	6 3/16	3 1/2	2 1/8	9/16	1 29/32	5/8	1 3/4	150	—	—	—
53233	1500 kcmil	1/2	6 1/4	3 1/2	2 1/4	1/2*	1 29/32	5/8	1 3/4	150	—	1	1
53233L	1500 kcmil	1/2	7 1/16	3 1/2	2	1/2	1 1/8	5/8	1 3/4	150	—	1	—
53433L**	1500 kcmil	1/2	7 1/16	3 3/8	3	1/2	1 1/8	5/8	1 3/4	150	—	1	—
251-30485-1275	1250 kcmil	1/2	6 1/16	3 1/2	2 1/8	9/16	1 29/32	5/8	1 3/4	150	—	—	—
251-30485-1211	1750 kcmil	—	6 3/8	3 3/8	3	1/2	2 1/16	—	—	175	—	—	2 (Fig. 2)
251-30485-1212	1750 kcmil	—	6 3/8	3 1/2	2 1/4	1/2	2 1/16	—	—	175	—	—	2 (Fig. 1)
53239	2000 kcmil	1/2	6 3/16	3 1/2	2 3/4	1/2	2 1/16	5/8	1 3/4	175	—	—	—
53239L	169/.110 178/.104 2000 kcmil	1/2	7 1/16	3 3/8	2 1/4	1/2	2 1/32	5/8	1 3/4	175	—	—	—
53439L**	169/.110 178/.104 2000 kcmil	1/2	7 1/16	3 3/8	3	1/2	2 1/16	5/8	1 3/4	175	—	—	11421 Die

* Denotes tongue thickness of alternate construction (brazed wrought-copper tongue).

** Figure 2. All others Figure 1.

Tooling: pp. F-80-F-100

Die Selector Chart: pp. F-101-F-104