

Structure Grounding

Dual-rated for both copper and aluminum conductor.

Aluminum Lay-in Lug Connector

- Manufactured from 6061-T6 aluminum alloy for maximum strength and conductivity
- Open-faced design enables installer to quickly lay-in grounding conductor as jumper to multiple conduits with no break in ground conductor

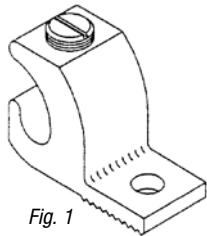


Fig. 1

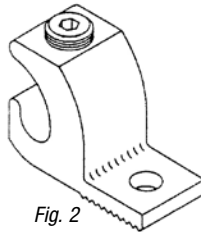
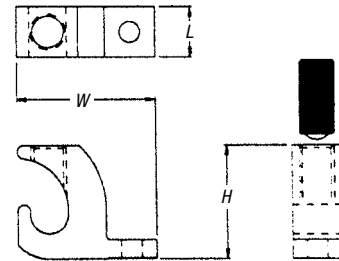


Fig. 2



CAT. NO.	FIG. NO.	COND. RANGE		STUD SIZE		DIMENSIONS							
		AWG		IN.	(MM)	IN.	(MM)	H		W		L	
		IN.	(MM ²)	IN.	(MM)	IN.	(MM)	IN.	(MM)	IN.	(MM)	IN.	(MM)
LL414	1	4-14	16-1.5	.22	5.59	.78	19.81	.38	9.65	1.07	27.18		
LL1014	1	1/0-14	50-1.5	.27	6.86	1.17	29.72	.60	15.24	1.50	38.10		
LL306	2	3/0-6	70-16	.33	8.38	1.56	39.62	.80	20.32	2.00	50.80		
LL2506	2	250-6	120-16	.33	8.38	1.79	45.47	.80	20.32	2.20	55.88		

90° C Rating (486B Listed)



UL® Listed for direct burial.

Copper Lay-In Lug Connector

- Ideal for swimming pool grounding applications
- Carries "DB" marking for direct burial
- Open-faced design enables installer to quickly lay-in grounding conductor as jumper to multiple conduits with no break in ground conductor



CAT. NO.	COND. RANGE		STUD SIZE		DIMENSIONS							
	AWG		IN.	(MM)	IN.	(MM)	H		W		L	
	IN.	(MM ²)	IN.	(MM)	IN.	(MM)	IN.	(MM)	IN.	(MM)	IN.	(MM)
CULL414	4-14	16-1.5	.22	5.59	.78	19.81	.38	9.65	1.07	27.18		
CULL414-TP*	4-14	16-1.5	.22	5.59	.78	19.81	.38	9.65	1.07	27.18		

90° C Rating (486B Listed)

* Tin plated

