

## Dual-Rated Mechanical Connectors

### Type ASR — ALCÜL™ Splicer Reducer with Solid Barrier Wire Stop



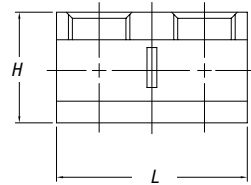
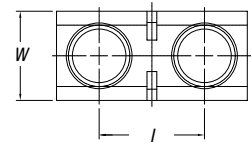
T&B CAT. NO.	CONDUCTOR RANGE (AL OR CU)		DIMENSIONS (IN.)				SCREWS
	MAX.	MIN.	L	W	H	I	
ASR0214*	#2	#14	.95	.45	.56	.53	2
ASR1114*	1/0	#14	1.31	.54	.60	.68	2
ASR2506	250	#6	2.18	.81	1.00	1.12	2
ASR3506	350	#6	2.56	1.12	1.29	1.48	2
ASR7525**	750	250	6.00	1.53	1.95	1.93	4

\* Slotted screws

\*\* Two set screws per end. Not CSA Certified.

UL 486B

AL9CU

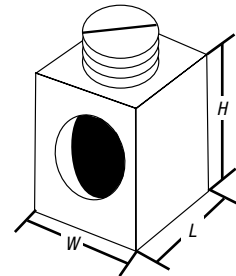


### Type BX — ALCÜL™ Rectangular Connectors

- Features anti-rotational boss
- UL486B Recognized (90° C rating)



CAT. NO.	CONDUCTOR RANGE		STYLE & SIZE OF BOSS	BOSS HOLE TAPPED	DIMENSIONS (IN.)		
	MAX.	MIN.			L	W	H
BX0214	2	14 CU 12 AL	Square .229 in.	10-32	1 <sup>5</sup> / <sub>32</sub>	1 <sup>5</sup> / <sub>32</sub>	9 <sup>1</sup> / <sub>16</sub>
BX1114	14 CU 1/0	Square 12 AL	.229 in.	10-32	5 <sup>1</sup> / <sub>8</sub>	1 <sup>7</sup> / <sub>32</sub>	3 <sup>9</sup> / <sub>64</sub>



### Type GP — Aluminum Dual-Rated Mechanical Parallel Tap Connectors

CAT. NO.	CONDUCTOR RANGE (AL OR CU)		DIMENSIONS (IN.)		
	MAIN	TAP	W	L	H
GP-2*	2-12 Str.	4-14	5 <sup>1</sup> / <sub>8</sub>	1 <sup>3</sup> / <sub>8</sub>	7 <sup>1</sup> / <sub>8</sub>
GP-0	1/0-2	1/0-14	3 <sup>1</sup> / <sub>4</sub>	1 <sup>3</sup> / <sub>4</sub>	1
GP-250-0	250-1/0	1/0-14	1 <sup>1</sup> / <sub>16</sub>	2 <sup>1</sup> / <sub>32</sub>	1 <sup>1</sup> / <sub>16</sub>
GP-250	250-1/0	250-6	1 <sup>1</sup> / <sub>16</sub>	2 <sup>2</sup> / <sub>32</sub>	1 <sup>1</sup> / <sub>16</sub>
GP-350	350-4/0	350-6	1 <sup>1</sup> / <sub>4</sub>	2 <sup>1</sup> / <sub>16</sub>	1 <sup>1</sup> / <sub>16</sub>
GP-500	500-350	500-2	1 <sup>3</sup> / <sub>8</sub>	3 <sup>1</sup> / <sub>8</sub>	1 <sup>3</sup> / <sub>4</sub>
GP-750	750-500	500-2	1 <sup>1</sup> / <sub>2</sub>	3 <sup>3</sup> / <sub>8</sub>	2

\* Slotted screw, tap side.

To include insulating cover, add suffix WC.

