

## Compression Connectors

Ideal for industrial, oil rig, mining, welding and transportation electrical termination applications.

### Type CTL-L — Copper One-Hole Lugs, Long Barrel

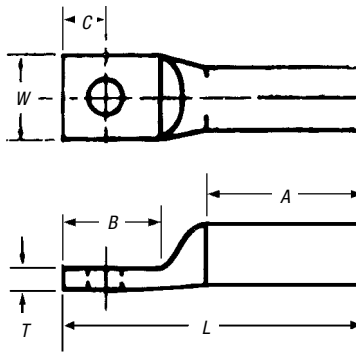
#### Copper Compression Connectors

- For use with copper conductor: AWG stranded, flexible cable, welding cable and portable cord
- Specially designed for industrial and building applications
- Made of high-conductivity seamless copper tubing
- Tin plated for corrosion resistance
- Specially chamfered barrel for ease of installation
- Color coded for matching die identification
- Can be used for high-voltage application up to 35kV provided proper high-voltage insulation techniques are used
- UL® Listed for AWG conductor when installed with Blackburn®, Burndy®, T&B® or Anderson tools

- Comply with Subpart 111.60-17 of Federal Register's Coast Guard Electrical Engineering Rules and Regulations

#### Long-Barrel Connectors

- Ideal for industrial, oil rig, mining, welding and transportation electrical termination applications
- Heavy-duty design permits additional crimp for added mechanical strength



CAT. NO.	CONDUCTOR SIZE	FLEXIBLE CONDUCTOR	STRANDING	STUD	DIMENSIONS (IN.)						DIE COLOR
					A	B	C	L	W	T	
CTL8L-14	#8 Str.	#8	37/24		29/32	5/8	1/4	1 1/8	1 3/32	1/16	RED
CTL6L-14	#6 Str.	#6	61/24	1/4	25/32	5/8	1/4	1 1/8	1 3/32	1/16	BLUE
CTL4L-14	#4 Str.	#5	91/24		25/32	5/8	1/4	1 11/16	1/2	3/32	GRAY
CTL2L-516	#2 Str.	#3	125/24		7/8	7/8	3/8	2 1/2	9/16	3/32	BROWN
CTL1L-516	#1 Str.	#2	150/24	5/16	13/32	7/8	3/8	2 3/32	2 1/32	3/32	GREEN
CTL10L-516	1/0 Str.	#1	225/24		13/32	7/8	3/8	2 7/32	3/4	1/8	PINK
CTL20L-38	2/0 Str.	1/0	275/24	3/8	13/32	29/32	3/8	2 1/4	1 3/16	1/8	BLACK
CTL30L-12	3/0 Str.	2/0	325/24		1 1/8	1 1/4	1/2	2 1/16	2 3/32	1/8	ORANGE
CTL40L-12	4/0 Str.	—	—		1 3/8	1 1/4	1/2	2 15/16	1 1/32	1/8	PURPLE
CTL250L-12	250 kcmil	3/0	450/24	1/2	1 19/32	1 1/4	1/2	3 3/8	1 1/8	1/8	YELLOW
CTL300L-12	300 kcmil	4/0	550/24		1 25/32	1 1/4	1/2	3 17/32	1 3/16	1/8	WHITE
CTL350L-12	350 kcmil	263 kcmil	650/24		1 27/32	1 1/4	1/2	3 13/32	1 11/32	5/32	RED
CTL400L-58	400 kcmil	313 kcmil	775/24		1 27/32	1 1/16	5/8	4 1/2	1 13/32	5/32	BLUE
CTL500L-58	500 kcmil	373 kcmil	925/24		2 11/32	1 1/16	5/8	4 1/2	1 19/32	3/16	BROWN
CTL600L-58	600 kcmil	444 kcmil	1100/24		2 1/8	1 1/16	5/8	4 5/16	1 23/32	7/32	GREEN
CTL750L-58	750 kcmil	535 kcmil	1325/24	5/8	2 3/8	1 1/16	5/8	4 21/32	1 29/32	1/4	BLACK
CTL1000L-58	1000 kcmil	646 kcmil	1600/24		2 7/8	1 1/16	5/8	5 5/32	2 1/4	5/32	N/A
		777 kcmil	1925/24								