

## Compression Connectors

Ideal for use in confined areas.

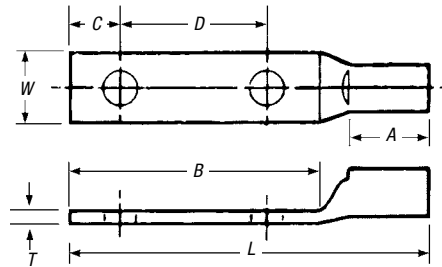
### Type CTL — Copper Two-Hole Lugs, Short Barrel

#### Copper Compression Connectors

- For use with copper conductor: AWG stranded, flexible cable, welding cable and portable cord
- Specially designed for industrial and building applications
- Made of high-conductivity seamless copper tubing
- Tin plated for corrosion resistance
- Specially chamfered barrel for ease of installation
- Color coded for matching die identification
- Can be used for high-voltage application up to 35kV provided proper high-voltage insulation techniques are used
- UL® Listed for AWG conductor when installed with Blackburn®, Burndy®, T&B® or Anderson tools
- Comply with Subpart 111.60-17 of Federal Register's Coast Guard Electrical Engineering Rules and Regulations

#### Short-Barrel Connectors

- Designed for regular-duty applications
- Ideal for confined areas



| CAT. NO.   | CONDUCTOR SIZE (CU)   | STUD SIZE | DIMENSIONS (IN.) |         |         |       |         |         |         | DIE COLOR CODE |       |
|------------|-----------------------|-----------|------------------|---------|---------|-------|---------|---------|---------|----------------|-------|
|            |                       |           | A                | B       | C       | D     | L       | W       | T       |                |       |
| CTL6-214   | #6 Str. or #6 Weld    | 1/4       | 1/2              | 1/4     | 1/4     | 5/8   | 1 3/32  | 1 3/32  | 1/16    | BLUE           |       |
| CTL4-214   | #4 Str. or #4 Weld    |           | 1/2              | 1/4     | 1/4     | 5/8   | 2 1/32  | 1/2     | 3/32    | GRAY           |       |
| CTL2-2516  | #2 Str. or #3 Weld    | 5/16      | 1 9/32           | 1 5/8   | 3/8     | 3/4   | 2 15/32 | 9/16    | 3/32    | BROWN          |       |
| CTL1-2516  | #1 Str. or #2 Weld    |           | 1 9/32           | 1 3/4   | 3/8     | 7/8   | 2 19/32 | 2 1/32  | 3/32    | GREEN          |       |
| CTL10-2516 | 1/0 Str. or #1 Weld   |           | 1 11/16          | 1 3/4   | 3/8     | 7/8   | 2 11/16 | 3/4     | 1/8     | PINK           |       |
| CTL202     | 2/0 Str. or 1/0 Weld  | 1/2       | 1 3/16           | 2 13/16 | 1/2     | 1 3/4 | 3 13/16 | 1 3/16  | 1/8     | BLACK          |       |
| CTL302     | 3/0 Str. or 2/0 Weld  |           | 2 5/32           | 2 13/16 | 1/2     | 1 3/4 | 3 15/16 | 1 5/16  | 1/8     | ORANGE         |       |
| CTL402     | 4/0 Str. or 3/0 Weld  |           | 1 5/16           | 3       | 1/2     | 1 3/4 | 4 1/4   | 1 3/32  | 1/8     | PURPLE         |       |
| CTL2502    | 250 kcmil or 4/0 Weld |           | 1 11/32          | 3       | 1/2     | 1 3/4 | 4 11/32 | 1 1/8   | 5/32    | YELLOW         |       |
| CTL3002    | 300 kcmil             |           | 1 11/32          | 3       | 1/2     | 1 3/4 | 4 17/32 | 1 1/16  | 5/32    | WHITE          |       |
| CTL3502    | 350 kcmil             |           | 1 11/32          | 3       | 1/2     | 1 3/4 | 4 17/32 | 1 11/32 | 5/32    | RED            |       |
| CTL4002    | 400 kcmil             |           | 1 11/32          | 3       | 1/2     | 1 3/4 | 4 15/16 | 1 13/32 | 5/32    | BLUE           |       |
| CTL5002    | 500 kcmil             |           | 1 3/8            | 3       | 1/2     | 1 3/4 | 5       | 1 11/32 | 7/32    | BROWN          |       |
| CTL6002-38 | 600 kcmil             |           | 3/8              | 1 17/32 | 1 29/32 | 3/8   | 1 3/4   | 5 1/8   | 1 23/32 | 7/32           | GREEN |
| CTL6002-12 | 600 kcmil             |           |                  | 1 17/32 | 3       | 1/2   | 1 3/4   | 5 1/8   | 1 23/32 | 7/32           | GREEN |
| CTL7502    | 750 kcmil             | 1/2       | 1 1/2            | 3       | 1/2     | 1 3/4 | 5 7/32  | 1 29/32 | 1/4     | BLACK          |       |
| CTL10002   | 1000 kcmil            |           | 1 3/4            | 3       | 1/2     | 1 3/4 | 5 7/32  | 2 1/4   | 9/32    | N/A            |       |