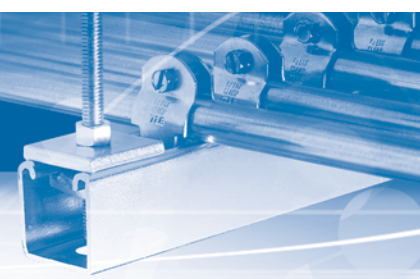


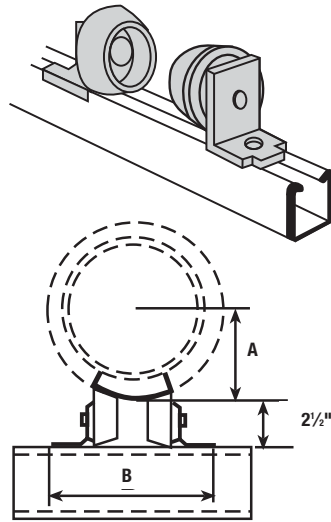
Pipe Straps, Conduit Clamps & Hangers



Rollers, Shields and Saddles

C-728 — Pipe Roller (Pair)

- Cast aluminum rollers, steel brackets
- Designed for standard saddles
- Order separately for each pair of rollers: Two 1/2" x 5/16" hex head cap screws, two 1/2" channel nuts
- Space to fit O.D. of pipe and wrapping
- Adjustable for radius up to 8"



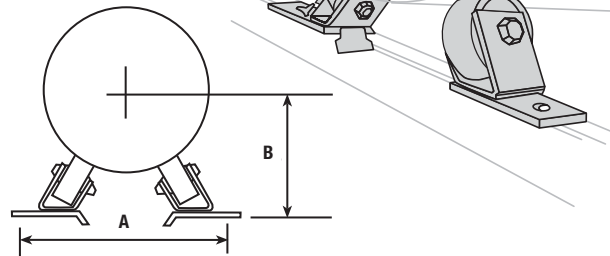
CAT. NO.	A MAX OS RADIUS (IN.)	B (IN.)	DESIGN LOAD (LBS.)	STD. CTN.
C728	3 3/4	6 3/4	2,350	5 pair (10 pieces)
	4 3/4	7 1/2	2,350	5 pair (10 pieces)
	6 3/4	8 1/2	2,350	5 pair (10 pieces)
	8 3/4	9 1/2	2,350	5 pair (10 pieces)

C728H — Pipe Roller Assembly (Pair)

Cast aluminum roller, steel brackets. Order separately for each pair of rollers:

- Two 1/2" x 5/16" hex head cap screws
- Two 1/2" channel nuts

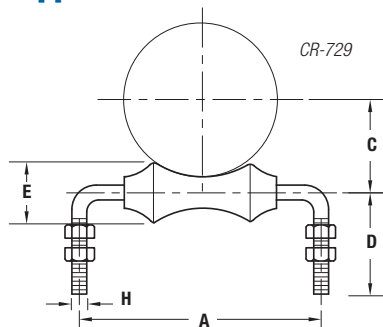
Adjustable to fit O.D. pipe 6" through 18".



CAT. NO.	PIPE SIZE (IN.)	A (IN.)	B (IN.)	DESIGN LOAD (LBS.)	STD. CTN.
C728H	6	10 1/16	6 3/16	3,920	5 pair (10 pieces)
	8	11 13/16	7 3/16	3,920	5 pair (10 pieces)
	10	12 1/2	8 3/16	3,920	5 pair (10 pieces)
	12	13 3/8	9 3/16	3,920	5 pair (10 pieces)
	14	14 1/2	9 3/4	3,920	5 pair (10 pieces)
	16	15 1/2	10 3/4	3,920	5 pair (10 pieces)
	18	16 1/2	11 3/8	3,920	5 pair (10 pieces)

CR-729 — Roller Support

Used on steam or hot water systems where pipe is to be supported in tunnels, trenches, structural brackets and frames. Adjustment is made by raising and lowering the top nut on the legs and locked into position by tightening the lower nut.



CR-729 PIPE SIZE OF ROLL	C-789 1" COV. 25	C-789A 1 1/2" COV. 38	C-789B 2" COV. 51	C-789C 2 1/2" COV. 64	C-789D 3" COV. 76	C-789E 4" COV. 100
4	2 1/2-3	2-2 1/2	—	—	—	—
5	3 1/2	—	—	—	—	—
6	4-5	3-3 1/2	2-2 1/2	—	—	—
7	6	4-5	3-4	2-2 1/2	2-2 1/2	—
8	8	6	5	3-3 1/2	3-3 1/2	—
10	—	8	6	4-5	4-5	—
12	10	10	8	6	6-8	4-6
14	12	12	10	8	—	—
16	14	14	12-14	10	8	8

Material: Steel Axle, Cast Iron Roll.

Finish: Standard Finish – GoldGalv®, Black (add suffix "-B"), Electro-Galvanized (add suffix "-EG").

Ordering: Specify pipe size, catalog number and finish.

Standard Finish – GoldGalv®, unless otherwise stated.

CR-729

CAT. NO.	PIPE SIZE (IN.)	MAX. LOAD (LBS.)	DIMENSIONS (IN.)				WT. EACH (LBS.)	
			A	C	D	E	H	
CR-729-2	2	300	4 1/2	1 3/8	3 3/4	1 3/8	3/8	0.79
CR-729-2-1/2	2 1/2	600	5	1 3/8	4 1/2	1 3/8	7/8	1.44
CR-729-3	3	600	5 1/2	2 1/4	4 1/2	1 3/8	7/8	1.62
CR-729-3-1/2	3 1/2	600	7	2 3/8	4 1/2	1 3/8	7/8	1.64
CR-729-4	4	700	7	2 13/16	4 1/2	1 3/8	7/8	1.82
CR-729-5	5	700	8 1/2	3 3/8	4 1/2	2	7/8	2.90
CR-729-6	6	1,000	10	4 1/8	4 1/2	2 1/8	7/8	4.66
CR-729-8	8	1,300	12	5 1/8	5 1/2	2 1/8	7/8	7.29
CR-729-10	10	1,700	14	6 1/8	5 1/2	3 1/8	7/8	10.23
CR-729-12	12	2,300	16	7 1/8	6	3 1/8	7/8	12.27
CR-729-14	14	3,075	17	8 1/8	7	4 1/8	1	21.39
CR-729-16	16	3,075	19	9 1/8	8	5 1/8	1	27.76