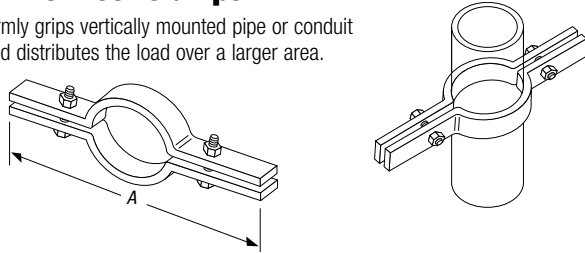


## Conduit, Cable and Pipe Supports

### C-720 Riser Clamps

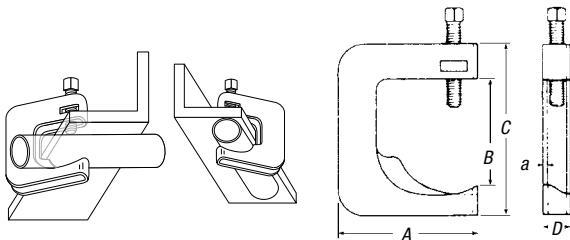
Firmly grips vertically mounted pipe or conduit and distributes the load over a larger area.



CAT. NO.	PIPE SIZE (IN.)	A (IN.)	SIZE STOCK (IN.)	SIZE BOLT (IN.)	MAX. REC. LOAD LBS.
C720 1/2	1/2	9 5/8	3/16 x 1	3/8 x 1 1/2	220
C-720-3/4	3/4	9 1/4	3/16 x 1	3/8 x 1 1/2	220
C-720-1	1	9 5/8	3/16 x 1	3/8 x 1 1/2	220
C-720-1-1/4	1 1/4	9 5/8	1/4 x 1	3/8 x 1 1/2	250
C-720-1-1/2	1 1/2	10	1/4 x 1	3/8 x 1 1/2	250
C-720-2	2	10 1/2	1/4 x 1	3/8 x 1 1/2	300
C-720-2-1/2	2 1/2	11 1/16	1/4 x 1	3/8 x 1 1/2	400
C-720-3	3	11 13/16	1/4 x 1	3/8 x 1 1/2	500
C-720-3-1/2	3 1/2	13	1/4 x 1	1/2 x 1 1/2	600
C-720-4	4	13 1/2	1/4 x 1	1/2 x 1 1/2	750
C-720-5	5	14	1/4 x 1 1/2	1/2 x 1 3/4	1,500
C-720-6	6	15 1/16	1/4 x 1 1/2	1/2 x 1 3/4	1,600
C-720-8	8	19	3/8 x 1 1/2	5/8 x 2 1/2	2,500

### C-247, C-248 & C-249 Steel Conduit Clamps

A versatile clamp for attaching conduit to any type of beam, channel, angle or column. Designed to hold the conduit snug against the support with conduit either parallel or at right angle to it. The case-hardened steel screw bites into the structural member for maximum security. 1/8" steel.

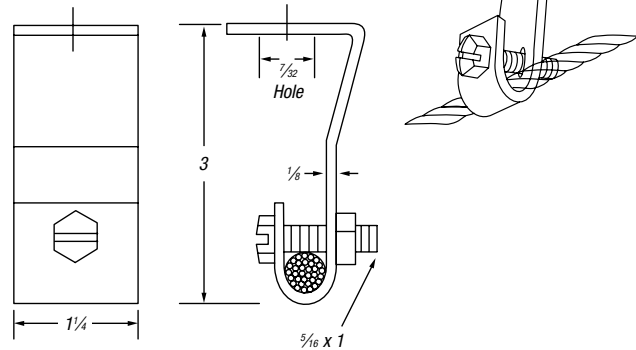


CONDUIT SIZE	MAXIMUM BEAM FLANGE THICKNESS (IN.)		
	C-247	C-248	C-249
1/2	5/8	1	—
3/4	7/16	3/4	1 1/2
1	—	1/2	1 1/4
1 1/4	—	1	—
1 1/2	—	—	5/8
Dim A	2 1/4	2 5/16	3 1/4
Dim B	1 3/8	1 1/4	2 1/2
Dim C	2 3/4	3	4
Dim D	9/16	5/16	5/8
Per Carton	100	50	50
Wt. in lbs./C	33	36	59

Galv-Krom® Finish.

### C-708 Messenger Cable Support

Designed for use as intermediate supports for 3/8" messenger cable. Grips cable when 5/16" screw is tightened. Provides easy vertical adjustment. Design load 1,000 lbs. Safety factor of 3.

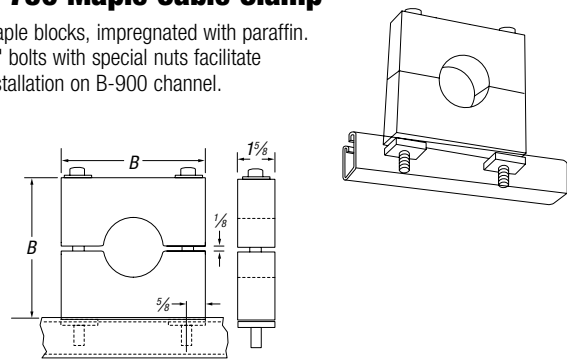


CAT. NO.	DESCRIPTION
C-708	3/8" Steel, 27 lbs./C

Galv-Krom® finish.

### C-750 Maple Cable Clamp

Maple blocks, impregnated with paraffin. 3/8" bolts with special nuts facilitate installation on B-900 channel.



CAT. NO. & SIZE	O.D. OF CABLE (IN.)	DIMENSIONS (IN.) A	WT. IN.	
			B	LBS./C
C-750-1	0-.99	4	3 7/8	90
C750 2	1.0-1.49	4 1/2	4 3/8	100
C-750-3	1.5-1.99	5	4 7/8	120
C-750-4	2-2.49	5 1/2	5 3/8	140
C-750-5	2.5-2.99	6	5 7/8	160
C750 6	3-3.49	7	6 3/8	200
C-750-7	3.5-3.99	8	7 3/8	240
C-750-8	4-4.49	—	—	—
C-750-9	4.5-5.00	—	—	—

Size refers to overall dimensions of Maple Cable Clamp only.

Hole will be bored to fit O.D. of cable.

Orders MUST specify exact O.D. of cable.

Special order.

## Pipe Straps, Conduit Clamps and Hangers

### HS Series Two-Hole Pipe Strap



CAT. NO.	PIPE SIZE (IN.)	STD. CTN.
HS901	1/2	500
HS902	3/4	500
HS903	1	500
HS904	1 1/4	250
HS905	1 1/2	250
HS906	2	125
HS907	2 1/2	125
HS908	3	100
HS909	3 1/2	75
HS910	4	50

Standard Finish — Galvanized.

Carbon steel.

Specify pipe size and catalog number.

For stainless steel, add suffix SS.

### HS Series One-Hole Pipe Straps

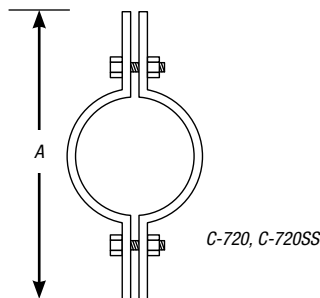


CAT. NO.	PIPE SIZE (IN.)	STD. CTN.
HS100	3/8	500
HS101	1/2	500
HS102	3/4	500
HS103	1	500
HS104	1 1/4	250
HS105	1 1/2	250
HS106	2	50
HS107	2 1/2	25
HS108	3	25
HS109	3 1/2	25
HS110	4	25

For stainless steel, add suffix SS.

### C-720, C-720SS — Extension Riser Clamp

Designed for the support or steadying of vertical pipe risers. It is made of carbon steel and is designed to hold tight to the pipe, transmitting the load to the structure through the ears on each end. When possible, the clamp should be placed under a coupling, hub or lugs welded to the pipe.



C-720, C-720SS

#### Specifications

- Material: Carbon Steel
- Compliance: Federal Specification A-A-1192A Type 8, MSS-SP-69 (Type 8) and BSPSS-BS3974.
- Finish: Standard Finish – GoldGalv®, Black (add suffix “-B”), Electro-Galvanized (add suffix “-EG”).

**Note:** This product is not designed to be supported with rods. Install using the maximum suggested torque values shown in the Technical Section of this catalog.

CAT. NO.	PIPE SIZE (IN.)	MAX. LOAD (LBS.)	A (IN.)	WT. EACH
C-720-1/2	1/2	255	9	1.00
C-720-3/4	3/4	255	8 3/4	1.08
C-720-1	1	255	8 3/4	1.08
C-720-1-1/4	1 1/4	255	10	1.86
C-720-1-1/2	1 1/2	255	10 1/4	1.22
C-720-2	2	255	10 1/4	1.30
C-720-2-1/2	2 1/2	390	11 1/4	1.74
C-720-3	3	530	11 3/8	1.98
C-720-3-1/2	3 1/2	670	12 3/8	2.14
C-720-4	4	810	12 3/8	2.28
C-720-5	5	1,160	13 3/4	3.60
C-720-6	6	1,570	14 3/4	3.68
C-720-8	8	2,500	18 1/2	7.26
C720 10	10	2,500	20 3/4	11.00
C-720-12	12	2,700	22 3/4	15.94
C-720-14	14	2,700	24	17.36
C-720-16	16	2,900	26	29.68
C-720-18	18	2,900	28	31.64
C-720-20	20	2,900	30	34.84
C-720-24	24	2,900	34	50.00

Standard Finish – GoldGalv®, unless otherwise stated.

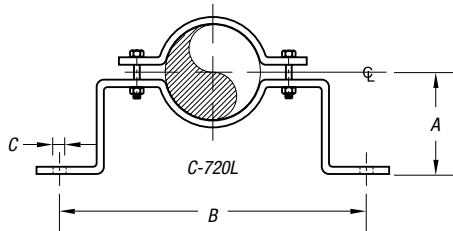
## Pipe Straps, Conduit Clamps and Hangers

### C-720L — Offset Pipe Clamp

The Offset Pipe Clamp is used on pipe lines running at a fixed distance from a wall or floor. The standard clearance is two inches from the O.D. of pipe to the face of the surface. Non-standard clearances can be fabricated upon request.

#### Specifications

- Material: Carbon Steel
- Load Rating: Up to 650° F (343° C)
- Finish: Standard Finish – GoldGalv®,
- Black (add suffix “-B”), Electro-Galvanized (add suffix “-EG”)
- Ordering: Specify pipe size, catalog number and finish



CAT. NO.	PIPE SIZE (IN.)	MAX. LOAD (LBS.)	A (IN.)	B (IN.)	C (IN.)	WT. EACH (LBS.)
C-720L-1/2	1/2	190	2 1/16	8 1/2	7/16	1.1
C-720L-3/4	3/4	190	2 3/4	8 3/4	7/16	1.3
C-720L-1	1	190	2 7/8	9 1/4	7/16	1.4
C-720L-1-1/4	1 1/4	190	3 1/16	9 3/4	7/16	1.5
C-720L-1-1/2	1 1/2	190	3 3/16	10	7/16	1.6
C-720L-2	2	420	3 1/2	11 1/4	9/16	2.8
C-720L-2-1/2	2 1/2	420	3 3/4	11 3/4	9/16	2.9
C-720L-3	3	420	4 1/16	12 7/8	9/16	3.2
C-720L-4	4	610	4 9/16	13 7/8	9/16	4.2
C-720L-5	5	610	5 1/16	15 5/8	1 1/16	6.5
C-720L-6	6	870	5 3/4	16 3/4	1 1/16	7.2
C-720L-8	8	870	6 3/8	18 3/4	1 1/16	8.3
C-720L-10	10	1,050	7 1/8	21 1/2	1 3/16	12.4
C-720L-12	12	1,200	8 3/8	24 7/8	1 3/16	21.0

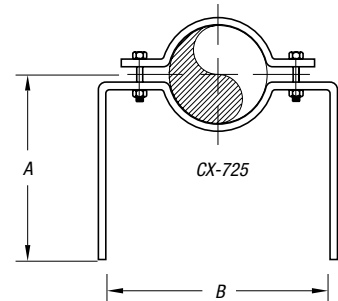
Standard Finish – GoldGalv®, unless otherwise stated.

### CX-725 — Extended Offset Pipe Clamp

Designed to attach directly to piping where the exact distance between the structure and the pipe cannot be determined until the piping is in place. The extended legs can be modified in the field to suit the location. Legs of longer lengths can be furnished on order.

#### Specifications

- Material: Carbon Steel
- Finish: Standard Finish – Black (add suffix “-B”), Electro-Galvanized (add suffix “-EG”)
- Ordering: Specify pipe size, catalog number and finish



CAT. NO.	PIPE SIZE (IN.)	A (IN.)	B (IN.)	WT. EACH (LBS.)
CX-725-3/8	3/8	12	3 3/4	1.85
CX-725-1/2	1/2	12	3 3/4	1.85
CX-725-3/4	3/4	12	4 3/4	1.85
CX-725-1	1	12	5 1/2	2.34
CX-725-1-1/4	1 1/4	12	5 5/8	2.40
CX-725-1-1/2	1 1/2	12	6 1/8	2.45
CX-725-2	2	12	7	3.13
CX-725-2-1/2	2 1/2	12	7 1/2	4.21
CX-725-3	3	12	7 7/8	4.47
CX-725-4	4	12	10 1/2	4.90
CX-725-5	5	12	12 1/4	4.90
CX-725-6	6	12	13	5.32
CX-725-8	8	12	15 1/4	11.20
CX-725-10	10	12	18 3/4	13.50
CX-725-12	12	12	20 3/4	22.00
CX-725-14	14	12	21	35.00

Standard Finish – GoldGalv®, unless otherwise stated.

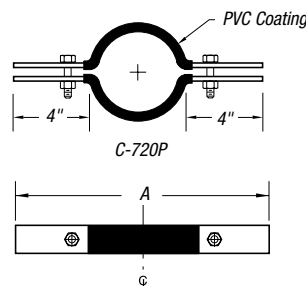
### C-720P — PVC-Coated Riser Clamp

The C-720P is normally used for the support of uninsulated vertical piping where no movement will occur. PVC coating the contact surface prevents galvanic corrosion with the pipe. Please use our C-720 for carbon steel piping or CT-720 for copper tubing requirements.

**Note:** This product is not designed to be supported with rods. Install using the maximum suggested torque values shown in the Technical Section of this catalog.

#### Specifications

- Material: Carbon Steel
- Compliance: Federal Specification A-A-1192A Type 8, MSS-SP-69 T 1400° F/600° C
- Finish: Polyvinyl Chloride
- Ordering: Specify pipe size and catalog number



CAT. NO.	PIPE SIZE (IN.)	MAX. LOAD (LBS.)	A (IN.)	WT. EACH (LBS.)
C720P-1/2	1/2	225	9 5/8	1.30
C-720P-3/4	3/4	225	9 5/8	1.36
C-720P-1	1	225	9 5/8	1.38
C-720P-1-1/4	1 1/4	225	10	1.95
C-720P-1-1/2	1 1/2	225	10 5/8	2.01
C-720P-2	2	225	10 3/4	2.17
C-720P-2-1/2	2 1/2	390	11 1/4	2.29
C-720P-3	3	530	12	2.50
C-720P-4	4	810	13 1/2	3.42

Standard Finish – GoldGalv®, unless otherwise stated.

## Pipe Straps, Conduit Clamps and Hangers

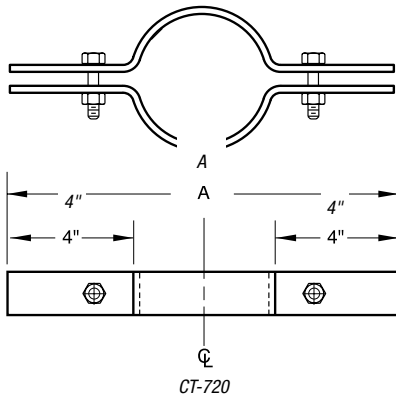
### CT-720 — Copper Riser Clamp

Normally used for the support of uninsulated vertical tubing where no movement will occur. Please use C-720 for carbon steel piping or C-720P for plastic coating requirements.

**Note:** This product is not designed to be supported with rods. Install using the maximum suggested torque values shown in the Technical Section of this catalog.

#### Specifications

- Material: Carbon Steel
- Compliance: Federal Specification A-A-1192A Type 8, MSS-SP-69 Type 8
- Finish: Copper
- Ordering: Specify tubing size and catalog number



CAT. NO.	TUBE SIZE (IN.)	MAX. LOAD (LBS.)	A (IN.)	WT. EACH (LBS.)
CT-720-1/2	1/2	220	9 <sup>9</sup> / <sub>16</sub>	.70
CT-720-3/4	3/4	220	9 <sup>9</sup> / <sub>16</sub>	.74
CT720 1	1	220	9 <sup>1</sup> / <sub>2</sub>	.75
CT-720-1-1/4	1 <sup>1</sup> / <sub>4</sub>	220	9 <sup>3</sup> / <sub>4</sub>	.77
CT-720-1-1/2	1 <sup>1</sup> / <sub>2</sub>	220	10 <sup>1</sup> / <sub>8</sub>	.80
CT-720-2	2	220	10 <sup>1</sup> / <sub>2</sub>	.84
CT-720-2-1/2	2 <sup>1</sup> / <sub>2</sub>	390	11	1.60
CT-720-3	3	530	11 <sup>1</sup> / <sub>2</sub>	1.80
CT-720-3-1/2	3 <sup>1</sup> / <sub>2</sub>	530	12 <sup>1</sup> / <sub>2</sub>	1.95
CT-720-4	4	530	13 <sup>1</sup> / <sub>2</sub>	2.04
CT-720-5	5	810	14	3.50
CT-720-6	6	1,570	15	5.25

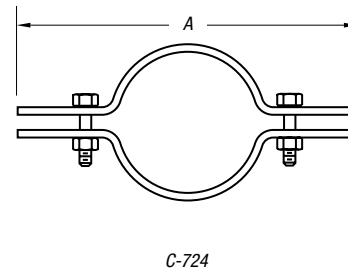
Standard Finish — GoldGalv®, unless otherwise stated.

### C-724 — Ductile Iron Pipe Clamp

Can be used to secure mechanical joint piping or socket fittings together to prevent separation under pressure either under or above ground, vertically or horizontally. If used in this fashion, two (2) W-724 Socket Clamp Washers and Figure 133 Rods are also required, but must be ordered separately. The C-724 may also be used to support and guide vertical ductile iron pipe.

#### Specifications

- Materials: Carbon Steel
- Finish: Standard Finish — GoldGalv®, Black (add suffix "-B"), Electro-Galvanized (add suffix "-EG")
- Ordering: Specify pipe size, catalog number and finish



CAT. NO.	PIPE SIZE (IN.)	ACTUAL PIPE O.D.	A (IN.)	WASHER SIZE (IN.)	WT. EACH (LBS.)
C-724-3	3	3.96	12 <sup>1</sup> / <sub>4</sub>	3/4	9.00
C-724-4	4	4.8	13 <sup>3</sup> / <sub>4</sub>	3/4	9.00
C-724-6	6	6.9	15 <sup>3</sup> / <sub>4</sub>	3/4	10.70
C-724-8	8	9.05	18	3/4	12.20
C-724-10	10	11.1	20 <sup>1</sup> / <sub>8</sub>	3/4	14.60
C-724-12	12	13.2	22 <sup>1</sup> / <sub>8</sub>	3/4	16.60
C-724-14	14	15.3	25 <sup>1</sup> / <sub>2</sub>	1 <sup>1</sup> / <sub>4</sub>	41.90
C-724-16	16	17.4	28	1 <sup>1</sup> / <sub>4</sub>	61.90
C-724-18	18	19.5	33	1 <sup>1</sup> / <sub>4</sub>	65.10
C-724-20	20	21.6	35 <sup>1</sup> / <sub>2</sub>	1 <sup>1</sup> / <sub>2</sub>	92.20
C-724-24	24	25.8	40 <sup>1</sup> / <sub>2</sub>	1 <sup>1</sup> / <sub>2</sub>	122.70
C-724-30	30	32	48	1 <sup>1</sup> / <sub>2</sub>	184.00

Standard Finish — GoldGalv®, unless otherwise stated.

## Technical Information

### Federal Specifications (WW-H-171)/ Manufacturers Society Specifications (MSS SP69)



**C-710**  
Adj. Steel Clevis  
Sizes 3/4" through 20" IPS  
**Federal Type 1**  
**SP69 Type 1**



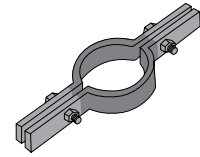
**C-726**  
Steel Double Bolt Pipe Clamp  
Sizes 1 1/2" through 24" IPS  
**Federal Type 3**  
**SP69 Type 3**



**C-725**  
Steel Pipe Clamp  
Sizes 1 1/2" through 24" IPS  
**Federal Type 4**  
**SP69 Type 4**



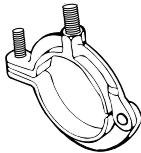
**CF-710**  
Adj. Steel Band Hanger  
Sizes 1/2" through 8"  
IPS 3/4" through 4" tube  
**Federal Type 7**



**C-720/CT-720**  
Extension Pipe or Riser Clamp  
Sizes 3/4" through 20"  
IPS 1/2" through 6" tube  
**Federal Type 8**  
**SP69 Type 8**



**C-727/CT-727**  
Adj. Swivel Ring Hanger  
Sizes 1/2" through 8" IPS  
1/2" through 4" tube  
**Federal Type 10**  
**SP69 Type 10**



**M-718/MT-718**  
MI Split Pipe Ring  
w/wo turnbuckle adj.  
Sizes 1/2" through 8" IPS  
1/2" through 4" tube  
**Federal Type 11**  
**SP69 Type 12**



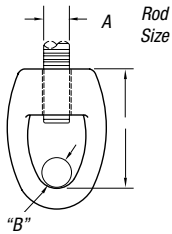
**CL-710**  
Light-Duty Clevis Hanger  
Sizes 1/2" through 4"  
**Federal Type 12**



**F-112**  
Forged Steel Turnbuckle  
Sizes 3/8" through 1 1/2" rod  
**Federal Type 13**  
**SP69 Type 13**



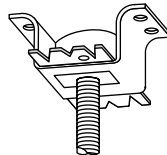
**F-111**  
Forged Steel Clevis  
Sizes 3/8" through 1 1/2" rod  
**Federal Type 14**  
**SP69 Type 13**



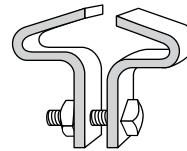
**M-117**  
MI Socket only for  
S Split Ring Hanger  
Sizes 3/8" through 1 1/2" Rod  
**Federal Type 16**  
**SP69 Type 16**



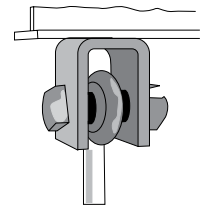
**E-120-A**  
Forged Steel Weldless Eye Nut  
Sizes 3/8" through 1 1/2" rod  
**Federal Type 17**  
**SP69 Type 17**



**452**  
Steel Concrete Insert  
**Federal Type 19**  
**SP69 Type 18**



**C-755 T/C-757 T**  
Center I-Beam Clamp  
**Federal Type 21**  
**SP69 Type 21**



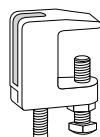
**C-780**  
Welded attachment as  
shown or inverted less bolt  
**Federal Type 22**  
**SP69 Type 22**



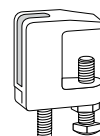
**M-775-L/C-775-L**  
MI or Steel C-Clamp  
Sizes 3/8" through 1 1/2"  
**Federal Type 23**  
**SP69 Type 23**



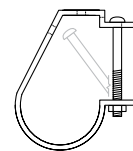
**H-115**  
U-Bolt  
Sizes 1/2" through 24" IPS  
**Federal Type 24**  
**SP69 Type 24**



**M-778**  
Top Beam C-Clamp  
Sizes 3/8" through 3/4" rod  
**SP69 Type 19**



**M-777**  
Junior Top Beam C-Clamp  
Sizes 3/8" through 1/2" rod  
**SP69 Type 18**



**C-711**  
'J' Pipe Hanger  
Sizes 1/2" through 8" pipe  
**SP69 Type 5**