

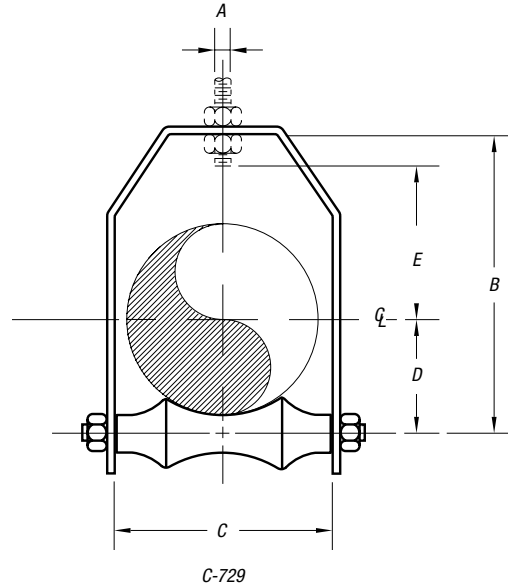
## Pipe Straps, Conduit Clamps and Hangers

### C-729 — Harvard Roll Hanger

Designed to support piping lines from above, allowing for vertical adjustment and axial movement in the piping. The lower nut (not furnished) adjusts the pipe line to the proper elevation. The top nut (not furnished) prevents loosening due to vibration and must be tightened securely to assure proper hanger performance.

#### Specifications

- Material: Carbon Steel frame with a Cast Iron Roll. Do not exceed 450° F/232° C at the contact point to the roll.
- Compliance: A-A-1192A Type 43 and MSS-SP-69 Type 43
- Finish: Black (add suffix "-B"), Electro-Galvanized (add suffix "-HDG")
- For pipe with insulation and a pipe covering protection saddle the C-729 will have to be oversized to suit. Please see the table below showing the correct sizing for insulated pipe.
- Ordering: Specify pipe size, catalog number and finish.



CAT. NO.	PIPE SIZE (IN.)	MAX. LOAD (LBS.)	DIMENSIONS (IN.)					WT. EACH (LBS.)
			ROD SIZE	A	B	C	D	
C-729-2	2	150	1/2	4 1/4	2 3/4	1 5/8	2 5/8	1.60
C-729-2-1/2	2 1/2	225	1/2	4 5/8	3 1/4	2	2 7/8	2.00
C-729-3	3	310	1/2	6 1/4	3 3/8	2 1/4	3 1/8	2.30
C-729-3-1/2	3 1/2	390	1/2	6 5/8	4 1/8	2 5/8	3 1/2	2.50
C-729-4	4	475	5/8	7 1/2	4 3/8	2 3/4	3 5/8	4.00
C-729-5	5	685	5/8	8 3/8	6 3/8	3 1/2	4 1/2	5.30
C-729-6	6	780	3/4	9 5/8	7 5/8	4	5	7.00
C-729-7	7	780	3/4	11 1/8	8 1/2	4 3/4	5 1/4	9.40
C-729-8	8	780	7/8	12 3/8	9 1/2	5 1/8	6 1/8	12.30
C-729-10	10	965	7/8	15	11 1/4	6 1/4	7 1/4	19.30
C-729-12	12	965	7/8	17 1/8	13 1/2	7 1/2	8 3/8	23.10
C-729-14	14	1,200	1	18 3/8	14 3/8	8 3/8	8 3/4	35.50
C-729-16	16	1,400	1	20 1/2	17 1/4	9 1/2	9 3/4	46.50
C-729-18	18	1,400	1	23 3/8	19	10 1/2	11 1/2	57.00
C-729-20	20	1,600	1 1/4	24 1/2	21	11 1/8	12 1/4	75.90
C-729-24	24	1,800	1 1/2	29 3/8	24 1/4	14	15 1/4	119.30

Standard Finish – GoldGalv®, unless otherwise stated.

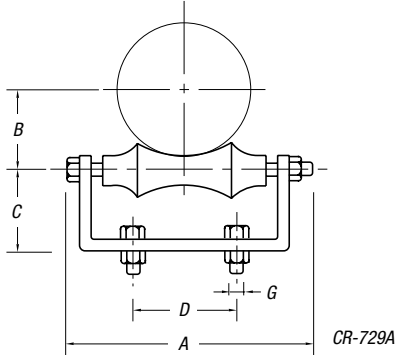
C-729 PIPE SIZE OF ROLL	C-789 1" COV. 25	C-789A 1 1/2" COV. 38	C-789B 2" COV. 51	C-789C 2 1/2" COV. 64	C-789D 3" COV. 76	C-789E 4" COV. 100
2 1/2	3/4	—	—	—	—	—
3	1-1 1/2	—	—	—	—	—
4	2-2 1/2	1-1 1/2	—	—	—	—
5	3-3 1/2	2-2 1/2	3/4-1 1/2	—	—	—
6	4	3-3 1/2	2-2 1/2	3/4-1	—	—
7	5	4	3-3 1/2	1 1/4-1 1/2	2	—
8	6	5	4	2-3	2 1/2	—
10	8	6	5-6	3 1/2-5	3-4	—
12	10	8	8	6	5-6	—
14	12	10	—	8	5-6	—
16	14	12	10	10	8	8
18	—	14	14	12	12	10
20	—	16	16	14	14	12
24	—	20	20	18	18	16

Standard Finish – GoldGalv®, unless otherwise stated.

## Pipe Straps, Conduit Clamps and Hangers

### CR-729A — Roller Chair

Designed for longitudinal movement of pipe where vertical adjustment is not required. Although two bolts are supplied for installation, the chair can be alternatively welded in position.



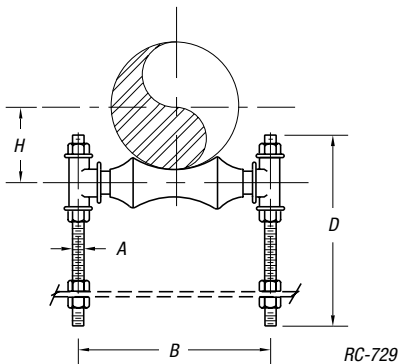
#### Specifications

- Material: Carbon Steel Chair and Axle with Cast Iron Pipe Roll. Use a Figure 17 when a Cast Iron Chair is required. Do not exceed 450° F/232° C at the contact point to the roll.
- Finish: Standard Finish – GoldGalv®, Black (add suffix “-B”), Electro-Galvanized (add suffix “-EG”).
- For pipe with insulation and a pipe covering protection saddle, the CR-729A will have to be oversized to suit.
- Please see the Table for the RC-729A which shows the correct sizing for insulated pipe.
- Ordering: Specify pipe size, catalog number and finish.

CAT. NO.	PIPE SIZE (IN.)	MAX. LOAD (LBS.)	DIMENSIONS (IN.)				BOLT SIZE G (IN.)	WT. EACH (LBS.)
			A	B	C	D		
CR-729-2A	2	300	4 <sup>7</sup> / <sub>8</sub>	1 <sup>1</sup> / <sub>2</sub>	1 <sup>1</sup> / <sub>2</sub>	2	3/8 x 1 <sup>1</sup> / <sub>2</sub>	1.10
CR-729-2-1/2A	2 <sup>1</sup> / <sub>2</sub>	600	4 <sup>7</sup> / <sub>8</sub>	2	1 <sup>1</sup> / <sub>2</sub>	2	3/8 x 1 <sup>1</sup> / <sub>2</sub>	1.40
CR-729-3A	3	600	6	2 <sup>1</sup> / <sub>4</sub>	1 <sup>3</sup> / <sub>4</sub>	2	3/8 x 1 <sup>1</sup> / <sub>2</sub>	1.60
CR-729-3-1/2A	3 <sup>1</sup> / <sub>2</sub>	600	6 <sup>1</sup> / <sub>2</sub>	2 <sup>5</sup> / <sub>8</sub>	2 <sup>1</sup> / <sub>2</sub>	2	3/8 x 1 <sup>1</sup> / <sub>2</sub>	2.60
CR-729-4A	4	700	7	2 <sup>7</sup> / <sub>8</sub>	2 <sup>3</sup> / <sub>4</sub>	2 <sup>1</sup> / <sub>2</sub>	3/8 x 1 <sup>1</sup> / <sub>2</sub>	2.90
CR-729-5A	5	700	7 <sup>7</sup> / <sub>8</sub>	3 <sup>1</sup> / <sub>2</sub>	2 <sup>1</sup> / <sub>2</sub>	3	1/2 x 2	3.90
CR-729-6A	6	1,000	9 <sup>3</sup> / <sub>4</sub>	4	2 <sup>3</sup> / <sub>4</sub>	3 <sup>3</sup> / <sub>4</sub>	1/2 x 2	6.00
CR-729-8A	8	1,300	11 <sup>7</sup> / <sub>8</sub>	5 <sup>1</sup> / <sub>8</sub>	3	4 <sup>1</sup> / <sub>2</sub>	3/4 x 2	9.00
CR-729-10A	10	1,700	14 <sup>1</sup> / <sub>2</sub>	6 <sup>3</sup> / <sub>8</sub>	3 <sup>3</sup> / <sub>8</sub>	5	3/4 x 2 <sup>1</sup> / <sub>2</sub>	13.80
CR-729-12A	12	2,300	16 <sup>3</sup> / <sub>4</sub>	7 <sup>1</sup> / <sub>2</sub>	4 <sup>1</sup> / <sub>8</sub>	6	3/4 x 2 <sup>1</sup> / <sub>2</sub>	18.90
CR-729-14A	14	3,100	18 <sup>1</sup> / <sub>2</sub>	8 <sup>3</sup> / <sub>8</sub>	4 <sup>3</sup> / <sub>4</sub>	6 <sup>1</sup> / <sub>2</sub>	3/4 x 2 <sup>1</sup> / <sub>2</sub>	28.10
CR-729-16A	16	3,900	20	9 <sup>1</sup> / <sub>8</sub>	5 <sup>1</sup> / <sub>2</sub>	10	7/8 x 3	34.90
CR-729-18A	18	4,200	22 <sup>3</sup> / <sub>4</sub>	10 <sup>1</sup> / <sub>2</sub>	6	9 <sup>3</sup> / <sub>4</sub>	3/4 x 2 <sup>1</sup> / <sub>2</sub>	44.40
CR-729-20A	20	4,500	25 <sup>1</sup> / <sub>2</sub>	11 <sup>1</sup> / <sub>8</sub>	6 <sup>1</sup> / <sub>2</sub>	10 <sup>1</sup> / <sub>4</sub>	3/4 x 2 <sup>1</sup> / <sub>2</sub>	56.30
CR-729-24	24	6,000	30	14	7 <sup>7</sup> / <sub>8</sub>	12 <sup>1</sup> / <sub>4</sub>	7/8 x 3 <sup>1</sup> / <sub>2</sub>	87.50

Standard Finish – GoldGalv®, unless otherwise stated.

### RC-729 — Adjustable Roll Support



#### Specifications

- Material: Cast Iron Pipe Roll and Sockets, Carbon Steel Axle, Continuous Thread Rods and Hex Nuts. Do not exceed 450° F/232° C at the contact point to the roll.
- Finish: Standard Finish – GoldGalv®, Black (add suffix “-B”), Electro-Galvanized (add suffix “-EG”).
- For pipe with insulation and a pipe covering protection saddle, the RC-729 will have to be oversized to suit.
- Please see the table for the RC-729A which shows the correct sizing for insulated pipe.
- Ordering: Specify pipe size, catalog number and finish.

CAT. NO.	PIPE SIZE (IN.)	MAX. LOAD (LBS.)	DIMENSIONS (IN.)				WT. EACH (LBS.)
			A	B	D	H	
RC-729-1-1/4	1 <sup>1</sup> / <sub>4</sub>	300	3/8	3 <sup>3</sup> / <sub>8</sub>	7 <sup>1</sup> / <sub>4</sub>	1 <sup>1</sup> / <sub>4</sub>	1.08
RC-729-1-1/2	1 <sup>1</sup> / <sub>2</sub>	300	3/8	3 <sup>5</sup> / <sub>8</sub>	7 <sup>1</sup> / <sub>4</sub>	1 <sup>1</sup> / <sub>4</sub>	1.11
RC-729-2	2	300	3/8	4 <sup>1</sup> / <sub>8</sub>	7 <sup>1</sup> / <sub>4</sub>	1 <sup>1</sup> / <sub>4</sub>	1.65
RC-729-2-1/2	2 <sup>1</sup> / <sub>2</sub>	600	1/2	5 <sup>1</sup> / <sub>2</sub>	8	2	2.72
RC-729-3	3	600	1/2	6 <sup>1</sup> / <sub>8</sub>	8	2 <sup>1</sup> / <sub>4</sub>	2.72
RC-729-3-1/2	3 <sup>1</sup> / <sub>2</sub>	700	1/2	7 <sup>1</sup> / <sub>8</sub>	8	2 <sup>5</sup> / <sub>8</sub>	2.72
RC-729-4	4	700	5/8	7 <sup>3</sup> / <sub>8</sub>	8 <sup>1</sup> / <sub>2</sub>	2 <sup>5</sup> / <sub>8</sub>	3.91
RC-729-5	5	700	5/8	8 <sup>3</sup> / <sub>8</sub>	9	3 <sup>1</sup> / <sub>2</sub>	4.63
RC-729-6	6	1,000	3/4	9 <sup>3</sup> / <sub>8</sub>	9	4	7.07
RC-729-8	8	1,300	7/8	12	10	5 <sup>1</sup> / <sub>8</sub>	11.40
RC-729-10	10	1,700	7/8	14 <sup>1</sup> / <sub>8</sub>	11	6 <sup>3</sup> / <sub>8</sub>	13.70
RC-729-12	12	2,300	7/8	16 <sup>1</sup> / <sub>8</sub>	12	7 <sup>1</sup> / <sub>2</sub>	15.90
RC-729-14	14	3,075	1	17 <sup>3</sup> / <sub>4</sub>	12	8 <sup>3</sup> / <sub>8</sub>	28.70
RC-729-16	16	3,970	1	19 <sup>3</sup> / <sub>4</sub>	18	9 <sup>1</sup> / <sub>2</sub>	42.50
RC-729-18	18	4,200	1	21 <sup>1</sup> / <sub>2</sub>	18	10 <sup>1</sup> / <sub>2</sub>	46.60
RC-729-20	20	4,550	1 <sup>1</sup> / <sub>4</sub>	24 <sup>1</sup> / <sub>4</sub>	18	11 <sup>1</sup> / <sub>8</sub>	66.20
RC-729-24	24	6,160	1 <sup>1</sup> / <sub>2</sub>	28 <sup>3</sup> / <sub>8</sub>	24	14	102.50
RC-729-30	30	7,290	1 <sup>1</sup> / <sub>2</sub>	35 <sup>1</sup> / <sub>2</sub>	24	17 <sup>1</sup> / <sub>2</sub>	186.80

Standard Finish – GoldGalv®, unless otherwise stated.

## Technical Information

### Federal Specifications (WW-H-171)/ Manufacturers Society Specifications (MSS SP69) (continued)



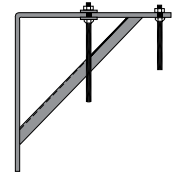
**C-704-A**  
Offset J-Hook  
Sizes ½" through 3" IPS  
Federal Type 27



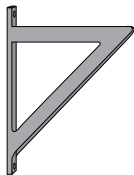
**M-732-H**  
I-Beam w/Eye Nut  
Federal w/o links Type 28  
Federal w/links Type 29  
SP69 Type 28



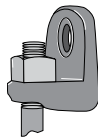
**M-732/M-732 Ext**  
I-Beam Clamp  
w/Swing Nut  
Sizes ¾" through ¾" Rod  
Federal Type 30  
SP69 Type 30



**C-736**  
Light Welded Steel Bracket  
Federal Type 32  
SP69 Type 31



**C-739-H**  
Heavy Welded Steel Bracket  
Max. Load 3,000 lbs.  
Federal Type 34  
SP69 Type 33



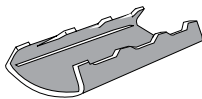
**M-750**  
Side Beam Bracket  
Sizes ¾" through ¾" Rod  
Federal Type 35  
SP69 Type 34



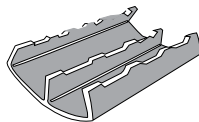
**C-785-A**  
Pipe Stanchion Saddle  
Sizes 4" through 36" IPS  
Federal Type 38  
SP69 Type 37



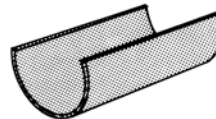
**C-786**  
Adj. Pipe Saddle Support  
Sizes 2½" through 36" IPS  
Federal Type 39  
SP69 Type 38



**C-789**  
Steel Pipe Covering  
Protection Saddle  
Sizes up to and including  
10" IPS  
Federal Type 40A  
SP69 Type 39



**C-789-AL**  
Steel Pipe Covering  
Protection Saddle  
Sizes 12" IPS and larger  
Federal Type 40B  
SP69 Type 39



**C-790**  
Insulation Protection Shield  
for Vapor sealed pipe lines and  
insulated copper tubing  
Sizes ¾" through 12" IPS  
Federal Type 41  
SP69 Type 40



**RC-729A**  
Single Pipe Roll  
Sizes 1" through 24" IPS  
Federal Type 42  
SP69 Type 41



**C-729**  
Adj. Roller Hanger  
Sizes 1" through 20" IPS  
Federal Type 44  
SP69 Type 43



**S-730-C**  
Pipe Roll Complete  
Federal Type 45  
SP69 Type 44



**S-730-D**  
Adj. Pipe Roll & Base  
Federal Type 47  
SP69 Type 46