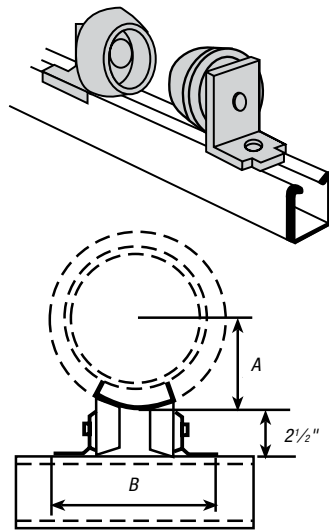


## Pipe Straps, Conduit Clamps and Hangers

### C-728 — Pipe Roller (Pair)

- Cast aluminum rollers, steel brackets
- Designed for standard saddles
- Order separately for each pair of rollers: Two ½" x ⅝" hex head cap screws, two ½" channel nuts
- Space to fit O.D. of pipe and wrapping
- Adjustable for radius up to 8"



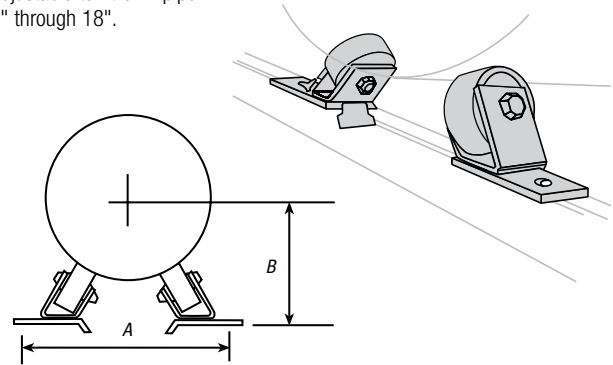
CAT. NO.	A MAX OS RADIUS (IN.)	B (IN.)	DESIGN LOAD (LBS.)	STD. CTN.
C728	3¾	6¼	2,350	5 pair (10 pieces)
	4¾	7½	2,350	5 pair (10 pieces)
	6¾	8½	2,350	5 pair (10 pieces)
	8½	9⅞	2,350	5 pair (10 pieces)

### C728H — Pipe Roller Assembly (Pair)

Cast aluminum roller, steel brackets. Order separately for each pair of rollers:

- Two ½" x ⅝" hex head cap screws
- Two ½" channel nuts

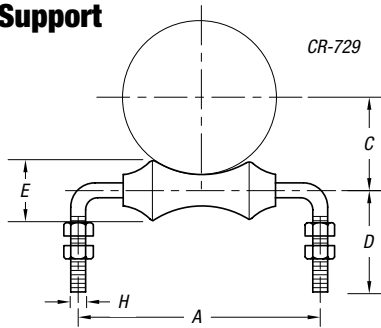
Adjustable to fit O.D. pipe 6" through 18".



CAT. NO.	PIPE SIZE (IN.)	A (IN.)	B (IN.)	DESIGN LOAD (LBS.)	STD. CTN.
C728H	6	10⅜	6⅞	3,920	5 pair (10 pieces)
	8	11⅜	7⅞	3,920	5 pair (10 pieces)
	10	12⅞	8⅞	3,920	5 pair (10 pieces)
	12	13⅞	9⅞	3,920	5 pair (10 pieces)
	14	14½	9¾	3,920	5 pair (10 pieces)
	16	15½	10⅞	3,920	5 pair (10 pieces)
	18	16½	11⅞	3,920	5 pair (10 pieces)

### CR-729 — Roller Support

Used on steam or hot water systems where pipe is to be supported in tunnels, trenches, structural brackets and frames. Adjustment is made by raising and lowering the top nut on the legs and locked into position by tightening the lower nut.



CR-729 PIPE SIZE OF ROLL	C-789 1" COV. 25	C-789A 1½" COV. 38	C-789B 2" COV. 51	C-789C 2½" COV. 64	C-789D 3" COV. 76	C-789E 4" COV. 100
4	2½-3	2-2½	—	—	—	—
5	3½	—	—	—	—	—
6	4-5	3-3½	2-2½	—	—	—
7	6	4-5	3-4	2-2½	2-2½	—
8	8	6	5	3-3½	3-3½	—
10	—	8	6	4-5	4-5	—
12	10	10	8	6	6-8	4-6
14	12	12	10	8	—	—
16	14	14	12-14	10	8	8

### Specifications

- Material: Steel Axle, Cast Iron Roll
- Finish: Standard Finish – GoldGalv®, Black (add suffix "-B"), Electro-Galvanized (add suffix "-EG")

CAT. NO.	PIPE SIZE (IN.)	MAX. LOAD (LBS.)	DIMENSIONS (IN.)					WT. EACH (LBS.)
			A	C	D	E	H	
CR-729-2	2	300	4½	1¾	3¼	1⅞	¾	.79
CR-729-2-1/2	2½	600	5	1⅞	4½	1¾	½	1.44
CR-729-3	3	600	5½	2¼	4½	1⅞	½	1.62
CR-729-3-1/2	3½	600	7	2¾	4½	1¾	½	1.64
CR-729-4	4	700	7	2⅞	4½	1⅞	½	1.82
CR-729-5	5	700	8½	3⅞	4½	2	¾	2.90
CR-729-6	6	1,000	10	4⅞	4½	2¾	¾	4.66
CR-729-8	8	1,300	12	5½	5¼	2¼	¾	7.29
CR-729-10	10	1,700	14	6¼	5½	3¾	¾	10.23
CR-729-12	12	2,300	16	7⅞	6	3⅞	¾	12.27
CR-729-14	14	3,075	17	8¾	7	4¼	1	21.39
CR-729-16	16	3,075	19	9⅞	8	5⅞	1	27.76