

## Concrete Inserts

### Concrete Inserts (Series 300/400)

Standard lengths 10 ft. and 20 ft. length tolerance  $\frac{3}{16}$ ". Assemblies available in any length from 12" to 20 ft. Consult factory.

Insert with end caps and foam filler strip installed.

#### Material:

B-302 and C-302 Insert Channel — 12 ga. steel.

B-804 and C-804 End Caps — 12 ga. steel.

Superstrut® continuous insert channel is cold formed from 12 gauge hot-rolled strip steel in two basic sizes as follows:

#### CAT. NO. B-302

$1\frac{5}{8}$ " x  $1\frac{3}{16}$ " dim.  $\frac{7}{8}$ " slot

#### CAT. NO. C-302

$1\frac{5}{8}$ " x  $1\frac{1}{8}$ " dim.  $\frac{7}{8}$ " slot

#### Finishes

Product is available in GoldGalv® pre-galvanized (PG), hot-dipped galvanized (HDG) and stainless steel (SS). Contact your T&B Sales team for delivery and pricing.

Standard lengths are 10 ft. and 20 ft. Product is supplied with foam filler and end caps to prevent seepage of concrete into channel.

#### Application

For casting into concrete walls, floors or ceilings to provide attachment anywhere along the continuous slot.

#### Design Data

Load ratings as shown have a safety factor of 3 in 3,000 lb. hard rock concrete. Where "good" concrete does not exist, the load ratings shall not apply.

GoldGalv® hardware finish is standard for all Superstrut® products. This is a multi-process finish of electro-plated zinc, followed by gold-colored trivalent chromium to give excellent corrosion resistance and a superior paint base. See pages B-106–B-107 for a complete description of the GoldGalv® hardware finish. GoldGalv® hardware will be furnished if no other finish is specified.

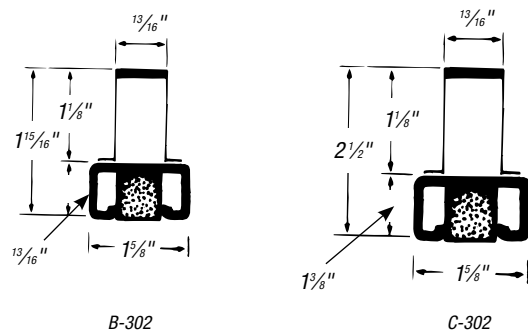
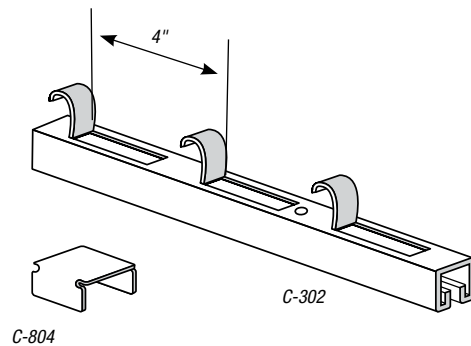
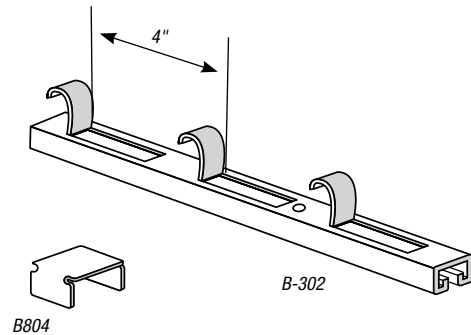
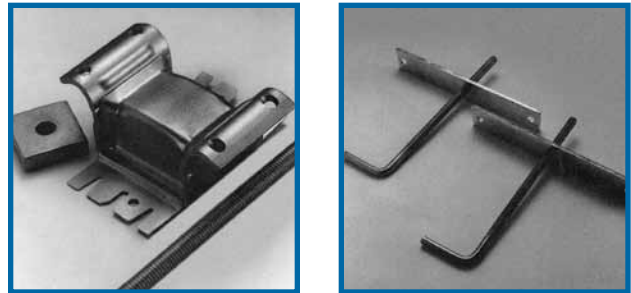
*Standard Finish – GoldGalv®, unless otherwise stated.*

#### Design Load lbs.

2,000 lbs. per foot in 3,000 lbs. hard rock concrete with a safety factor of 2.

**NOTE:** B-302 and C-302 are furnished with:

- A.** Concrete safe tape applied to interior of channel to cover holes.
- B.** Styrene insert between tape and  $\frac{7}{8}$ " continuous opening.
- C.** Two end caps on either side of strut to prevent concrete seepage.



CAT. NO.	DESCRIPTION
B-302*	Insert channel 12 ga. steel — $1\frac{3}{16}$ " depth
C-302*	Insert channel 12 ga. steel — $1\frac{3}{8}$ " depth
B804	End cap in B Series Concrete Insert
C-804	End cap in C Series Concrete Insert

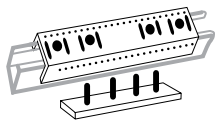
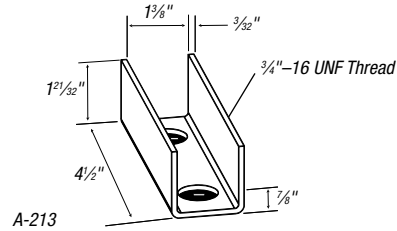
\*Add suffix -10 for 10' lengths and -20 for 20' lengths

## Surface Raceway and Lighting Systems

### Fixture Fittings

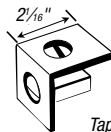


**A-243-1**  
End Cap for A-1200 Channel



**802**  
Raceway Joiner with Reinforcing Plate  
furnished complete with nuts.

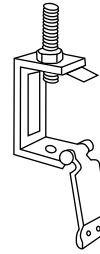
CAT. NO.	FOR CHANNEL	STD. CTN.
A802	A Series	25
B-802	B Series	25
E-802	E Series	10
H-802	H Series	10



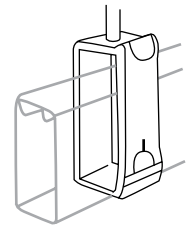
**809**  
Tapped End Cap

12 ga for 3/4" or 1" Conduit.  
Furnished complete with 1/4" x 5/8"  
Flat Head Machine Screw and  
AB-100-1/4 nut.

CAT. NO.	FOR CHANNEL	STD. CTN.
A-809	A Series	25
H-809	H Series	25



**A853**  
Channel Hanger  
Use hanger rod 3/8" or 1/2".  
Use with "A", "B" or "C" series  
single channel.

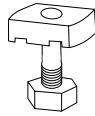


**A853L**  
Channel Hanger  
Long type for all  
series channel.



**804**  
End Cap

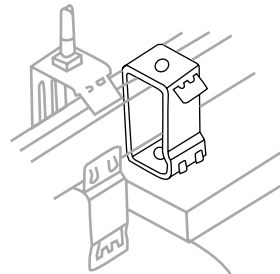
CAT. NO.	FOR CHANNEL	STD. CTN.
A804	A-1200	25
	A-1400	25
B804	B-1400	25
C-804	C-1200	25
E-804	E-1200	25
H-804	H-1200	25



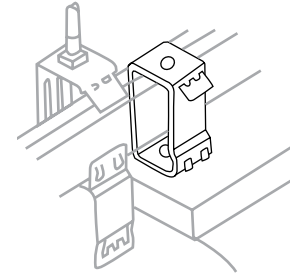
**811**  
Stud Nut

For attaching fixture to Slot Down  
Channel or to Slot up Knockouts.  
Specific length. Hex Nut included.

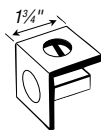
CAT. NO.	FOR CHANNEL	STD. CTN.
811 1-STR	1/4 x 1	50
811-2STR	1/4 x 1 1/4	50



**A854**  
Channel Hanger  
Illustration showing A-854 with nut and bolt  
furnished to attach to fluorescent fixture.  
Use with "A", "B" or "C" series channel.



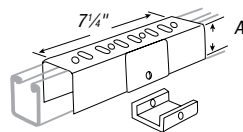
**A854L**  
Channel Hanger  
Long Illustration showing A-854-L  
with nut and bolt furnished to attach  
to fluorescent fixture. Long  
type for all series channel.



**805**  
End Cap with Knockout

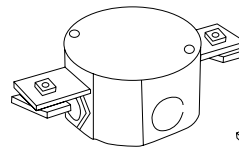
KO for 1/2" conduit. Furnished  
complete with 1/4" x 5/8" flat Head  
Machine Screw and AB-100-1/4 nut.

CAT. NO.	FOR CHANNEL	STD. CTN.
A-805	A Series	25
H-805	H Series	25

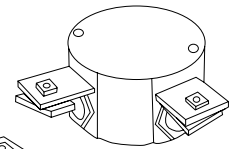


**822**  
Raceway Joiner & Seal

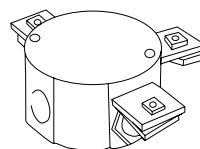
CAT. NO.	A (IN.)	FOR CHANNEL	STD. CTN.
A822*	1 1/16	A Series	25
B-822*	7/8	B Series	25
C-822*	1 1/16	C Series	25



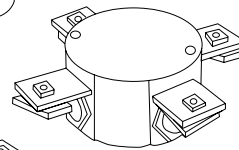
A889\*



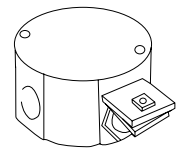
A890\*



A892\*



A891\*



A893