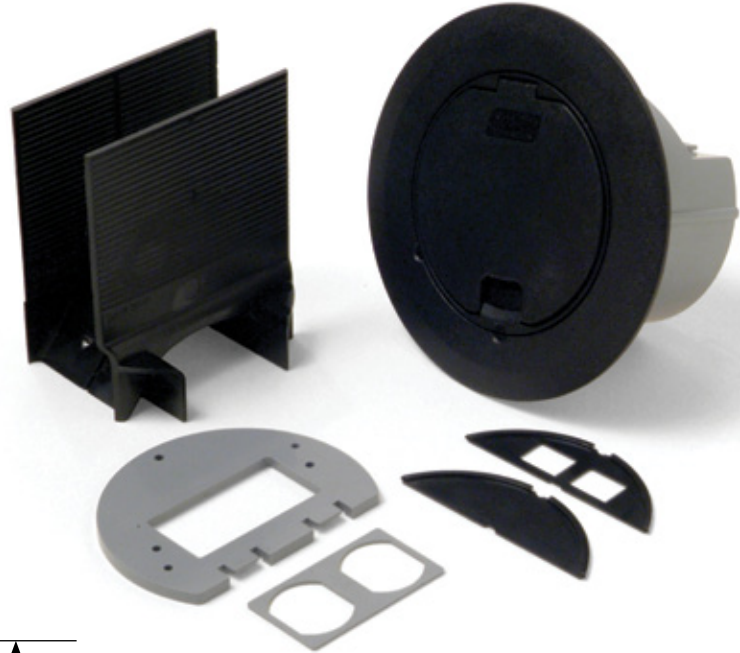


Recessed Service Floor Boxes

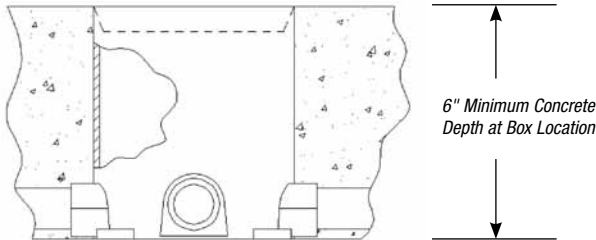
68R Recessed Covers (continued)

Cover kit includes:

- Cover assembly
- Receptacle mounting plate
- Duplex receptacle insert
- 2-port keystone data plate
- Blank data plate
- Voltage divider



Technical Information



Important Application Note:

When using the 68R Recessed Cover with the 68-P floor box for concrete applications, the entire box depth (6") is required. Prior to concrete pour, level the top of the box with the screed line of the concrete.



Power and Communications

CAT. NO.	DESCRIPTION	STD. CTN.
68R-CST-BLK	Non-Metallic Recessed Floor Box Cover Kit, Black	4
68R-CST-GRY	Non-Metallic Recessed Floor Box Cover Kit, Gray	4
68R-CST-BGE	Non-Metallic Recessed Floor Box Cover Kit, Beige	4
68R-CST-BRN	Non-Metallic Recessed Floor Box Cover Kit, Brown	4
68R-CST-BRS	Non-Metallic Recessed Floor Box Cover Kit, Black with Brass Flange	4
68R-CST-ALM	Non-Metallic Recessed Floor Box Cover Kit, Black with Aluminum Flange	4
68-P	Round PVC Floor Box for Concrete Applications	8
CXWOW	3" x 2" Metal Switch Box, 3½" Deep, for Non-Metallic Sheathed Cable, Wood Subfloors	25
CY 1/2	3" x 2" Metal Switch Box, 3½" Deep, ½" KOs	25