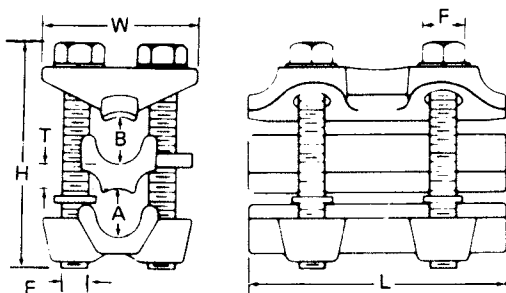
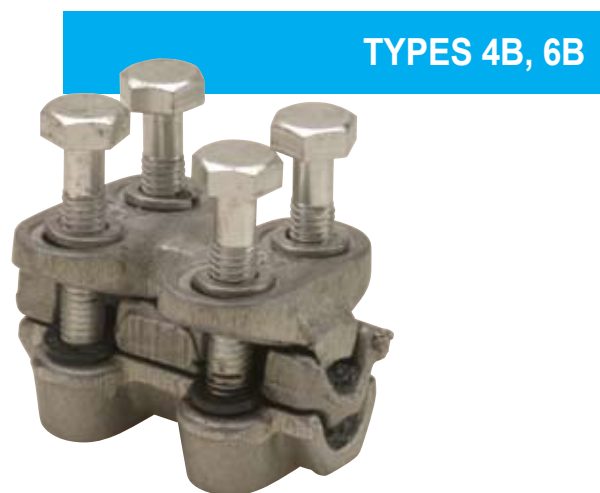


CONNECTORS

Multi-Bolt Connectors

- Cap and pressure plate of cast aluminum alloy; spacer of high conductivity aluminum
- High strength aluminum alloy bolts and lock washers prevent seizing
- One piece construction eliminates loose parts during installation
- For use on copper, aluminum and ACSR conductors
- Factory filled with Contax oxide inhibitor



TYPES 4B, 6B – ONE PIECE MULTI-BOLT CONNECTORS

Cat. No.	Conductor Range				Conductor Diameter				Dimensions (in.)						No. of Bolts
	ACSR		AWG or KCMIL		A		B		W	F	H	T	L	E	
	Main	Tap	Main	Tap	max.	min.	max.	min.							
4B29	4/0—4	4/0—4	250—2 str.	250—2 sol.	.575	.250	.575	.250	2 ⁵ / ₁₆	5/8	3 ⁹ / ₁₆	1 ¹ / ₃₂	3 ¹ / ₄	7/16	4
4B49	397.5—1/0	397.5—1/0	477—1/0 str.	477—1/0 str.	.795	.368	.795	.368	2 ³ / ₄	3/4	4 ⁵ / ₁₆	1 ³ / ₃₂	4 ³ / ₄	1/2	4
6B89	795—300	795—300	800—350	800—336.4	1.108	.679	1.108	.679	3 ¹ / ₂	1 ⁵ / ₁₆	5 ⁹ / ₆₄	7/16	6 ³ / ₄	5/8	6

Mechanical Connectors