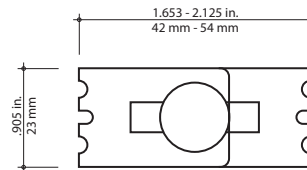


Splices

Adjustable Splice



Dimensions



Used to construct angles or bends with a radius, the adjustable splice is designed for ease of installation when field-producing bends. Installed on the inside radius, this splice adjusts up to 1/2 in. and is ideally suited for any application where adjustment may be necessary. Compatible with all tray profiles, the adjustable splice is available in electro-galvanized, pregalvanized, hot-dipped galvanized and stainless steel (types 304 and 316).

EXPRESS TIP

Refer to pages C39, C41 and C42 for application examples.



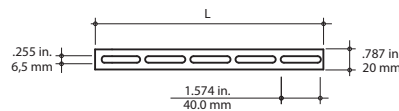
Tool required: 10mm nut driver

Cat. No.	Material	Weight	
		lb./ea.	kg/ea.
ETH-ADJSP-EG	Electrogalvanized Steel	0.13	0.06
ETH-ADJSP-PG	Pregalvanized Steel		
ETH-ADJSP-HD	Hot-dipped Galvanized Steel		
ETH-ADJSP-SS	Stainless Steel (Type 304)		
ETH-ADJSP-S6	Stainless Steel (Type 316)		

Reinforcing Splice Bar



Dimensions



Used to reinforce connections of two straight sections of tray, the splice bar can also be cut to length using a bolt cutter and bent for use in Tee or Cross formations. Available in hot-dipped galvanized steel in two lengths. Splice bars can be ordered individually or as a kit that includes one (1) splice bar and three (3) bracket clamps (hot-dipped galvanized).

EXPRESS TIP

Refer to page C37 for application example.



Tool required: 10mm nut driver

Cat. No.	Description	Length (L)		Weight	
		in.	mm	lb./ea.	kg/ea.
ETH-SB11-HD	Single Splice Bar	10.6	270	0.62	0.28
ETH-SB11-KIT-HD	Splice Bar Kit*	10.6	270	0.86	0.39
ETH-SB40-HD	Single Splice Bar	39.3	1000	1.78	0.81

* Kit includes — 1 splice bar (ETH-SB11-HD) with 3 bracket clamps (ETH-WBC-HD)