

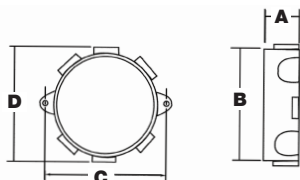
Iberville® metallic round boxes and covers



CIC-8444 / CIC-8448



CIC-8495



Cat. No.	Hub Size (in.)		No. of Lugs	No. of Plugs	Description	A (in.)	B (in.)	C (in.)	D (in.)	Cu. (in.)
	Side	Bottom								
Weatherproof Junction Box Kits (Cast Aluminum)										
CIC-8444	4 X 1/2	1/2	2	4 X 1/2	Includes cover, gasket, plugs and mounting screws	1-5/8	3-15/16	5	4-5/16	17,3
CIC-8446	4 X 3/4	1/2	2	3 X 3/4	Includes cover, gasket, plugs and mounting screws	1-5/8	3-15/16	5	4-5/16	17,3
		1/2	2	1 X 1/2	Includes cover, gasket, plugs and mounting screws	1-5/8	3-15/16	5	4-5/16	17,3
CIC-8448	4 X 1	1/2	2	3 X 1	Includes cover, gasket, plugs and mounting screws	1-5/8	3-15/16	5	4-5/16	17,3
		1/2	2	1 X 1/2	Includes cover, gasket, plugs and mounting screws	1-5/8	3-15/16	5	4-5/16	17,3
Outlet Box 4-1/2 Dia. (Cast Aluminum)										
CIC-8495	6 X 1/2	1/2	2	5 X 1/2	—	1-1/2	3-15/16	4-5/8	4-5/16	17,3



CIC-93



CCRB / CCRSB



Cat. No.	Description
Weatherproof Round Cover – 4-3/16 in. Dia. (Stamped Aluminum)	
CIC-93	For 4 in. weatherproof round box. Includes gasket and mounting screws

Cat. No.	Description
Blank Outlet Cover (Stamped Aluminum)	
CCRB	Stamped aluminum 5 in. round blank outlet cover with screws. Mounting holes are 3-1/2 in. on center. Painted white. Thickness 5/32 in.
CCRSB	Stamped aluminum 5 in. round blank outlet cover with screws. Mounting holes are 2-3/4 in. on center. Painted white. Thickness 5/32 in.



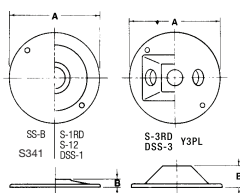
SJ-11



S-12 / S211BRE



S213E-R



Cat. No.	Description	Hub Size (in.)	No. of Hubs	A (in.)	B (in.)
Red•Dot® Outlet Covers – 4-1/8 in. Dia. (Cast Aluminum)					
S-12*	Round standard lamp holder cover, silver, aluminum	3/4	1	4-1/8	3/8
S211E	Round standard lamp holder cover, silver, aluminum,	1/2	1	4-1/8	3/8
S213E-R	Round standard lamp holder cover, Silver, aluminum, with gasket, screws and plugs	1/2	3	4-1/8	1-1/16
SJ-11	Silver round lampholder cover with one tapped hole	1/2	—	—	—

*Not CSA Certified