





# 3SE6 Magnetic Monitoring Systems

## Selection

### Selection and ordering data

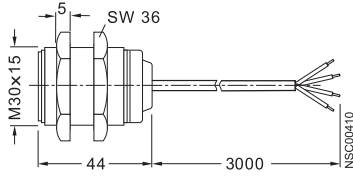
		Design	Size	S <sub>an</sub> ... S <sub>ab</sub>	Contacts	DT	Order No.	List Price \$ 1 unit	Weight approx. kg
<b>Round sensor unit. IP67</b>									
	3SE6 704-1BA	3SE6 605-1BA	Switching magnet (coded)	M 30			<b>3SE6 704-1BA</b>		0.035
			Switch block with 3 m cable	M 30	5 to 15	1 NO + 1 NC	<b>3SE6 605-1BA</b>		0.166
			Switch block with M12, 4-pole male receptacle <sup>1)</sup>	M 30	5 to 15	1 NO + 1 NC	<b>3SE6 605-1BA02</b>		0.130
<b>Rectangular sensor unit. IP67</b>									
	3SE6 605-2BA, 3SE6 704-2BA	3SE6 605-3BA, 3SE6 704-3BA	Switching magnet (coded)	25 x 88			<b>3SE6 704-2BA</b>		0.027
			Switch block with 1 m cable	25 x 88	5 to 15	1 NO + 1 NC 2 NC	<b>3SE6 605-2BA</b> <b>3SE6 604-2BA</b>		0.165 0.165
			Switch block with M8 male receptacle	25 x 88	5 to 15	1 NO + 1 NC 2 NC	<b>3SE6 605-2BA01</b> <b>3SE6 604-2BA01</b>		0.040 0.130
			Switching magnet (coded)	25 x 33			<b>3SE6 704-3BA</b>		0.014
			Switch block with 3 m cable	25 x 33	4 to 14	1 NO + 1 NC	<b>3SE6 605-3BA</b>		0.151
		Switch block with 3 m cable	25 x 33	4 to 14	1 NO + 2 NC	<b>3SE6 606-3BA</b>		0.151	
<b>Accessories</b>									
	3SX3 260	3SX3 261	Spacer for rectangular sensor unit	25 x 88			<b>3SX3 260</b>		0.015
			Spacer for rectangular sensor unit	25 x 33			<b>3SX3 261</b>		0.010
<b>Monitoring units</b>									
	3SE6 806-2CD00			24	2 NO / 1 NC	6 1 NO + 1 NC	<b>3SE6 806-2CD00</b>		0.200

1) Pin 1 (S21) + Pin 2 (S22) = Normally Closed; Pin 3 (S13) + Pin 4 (S14) = Normally Open  
 Typical 4-pole Female Plugs with black 5 meter cable include: 3RX1542 (right-angle) or 3RX1513 (straight plug).

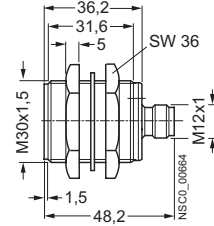
**Dimension drawings**

*Round sensor units*

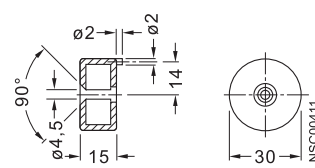
**Switch block 3SE6 605-1BA**



**Switch block 3SE6 605-1BA02**

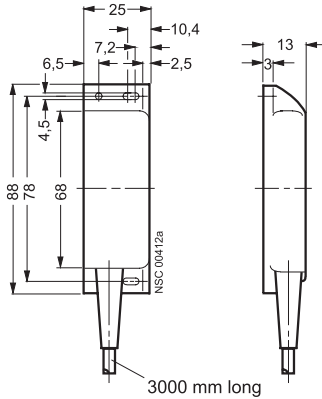


**Coded switching magnet 3SE6 704-1BA**



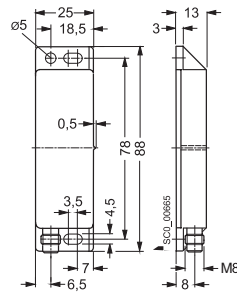
*Rectangular sensor units*

**Switch block 3SE6 605-2BA**

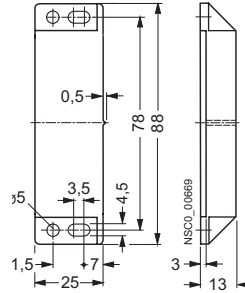


Switching magnet without lead

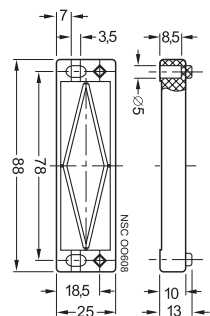
**Switch block 3SE6 60.-2BA0.**



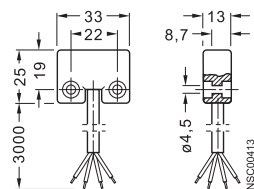
**Switch block 3SE7 704-2BA**



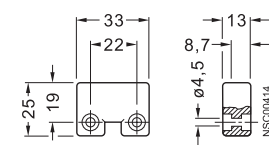
**3SX3 260 spacer**



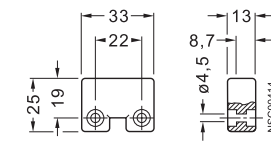
**Switch block 3SE6 605-3BA**



**Coded switching magnet 3SE6 704-3BA**



**3SX3 261 spacer**



*Monitoring unit*

**Magnet Switch Monitor 3SE6 806-2CD00**

