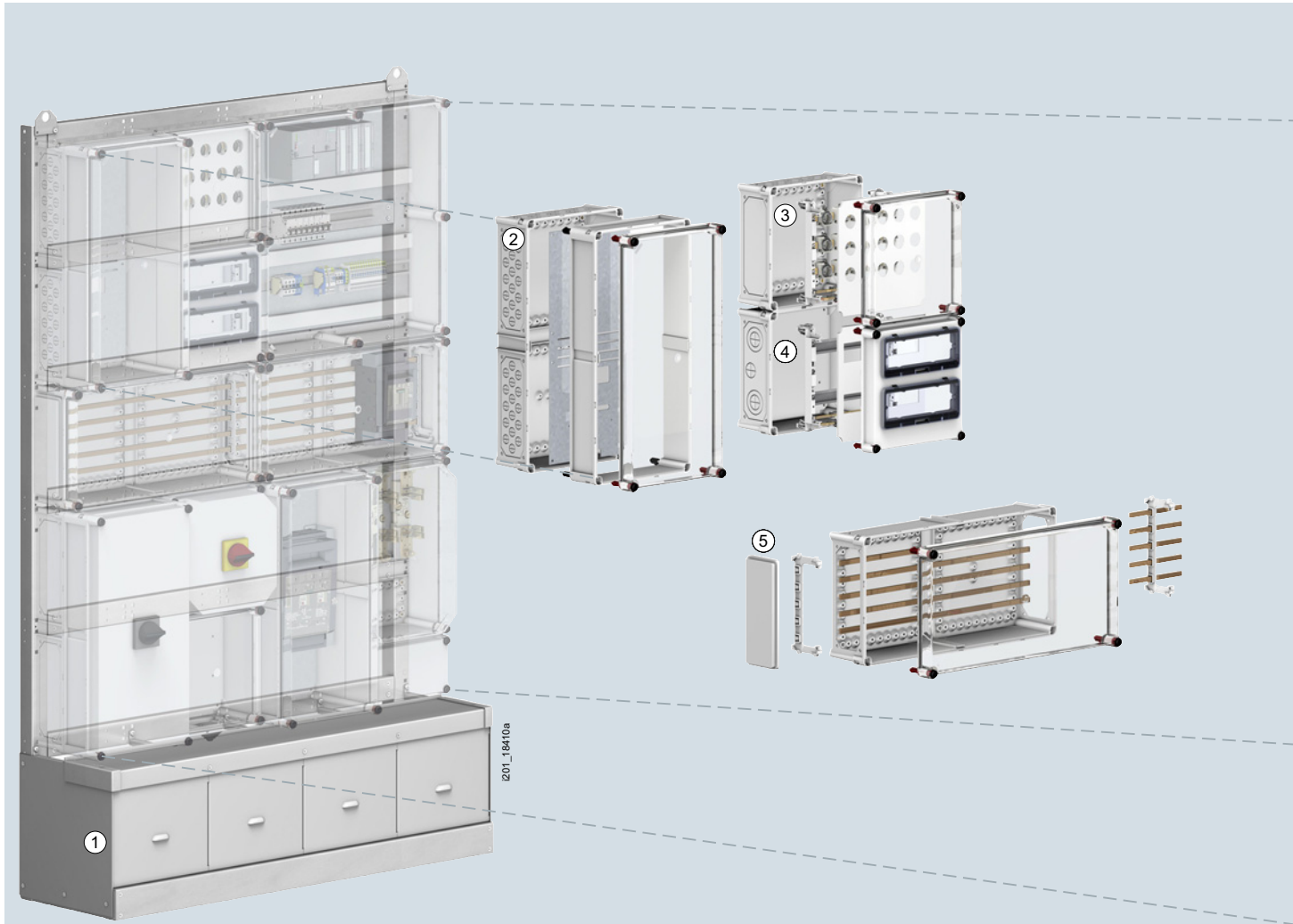


# Molded-Plastic Distribution Systems

## Introduction

### Overview



- |                                       |                                    |
|---------------------------------------|------------------------------------|
| ① Support rack with cable space cover | ⑦ 3VL molded case circuit breakers |
| ② Meter enclosures                    | ⑧ 3NP1 fuse switch disconnectors   |
| ③ DIAZED/NEOZED fuse systems          | ⑨ 3KA, 3KE switch disconnectors    |
| ④ Modular installation devices        | ⑩ Flanges for cable entry          |
| ⑤ 8US busbar system                   | ⑪ 3NP1 fuse switch disconnectors   |
| ⑥ Enclosure with mounting plate       | ⑫ LV HRC fuse bases                |

Components of the ALPHA 8HP molded-plastic distribution system



## Molded-Plastic Distribution Systems

### Introduction

The ALPHA 8HP distribution system is ideal for control panels and low-voltage and power distribution boards. The modular design offers virtually endless combination and expansion options. Thanks to the use of high-quality materials, the system is ideal for harsh ambient conditions and offers optimum protection for your components.

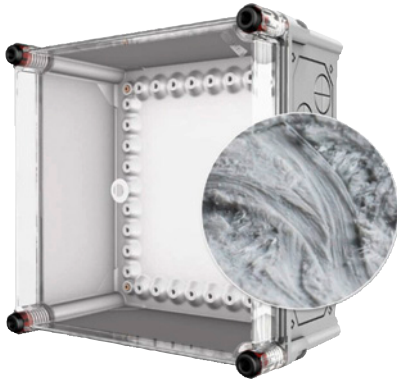
The system also rounds off our comprehensive portfolio of assembly kits and accessories. As a complete supplier of devices and enclosures, Siemens always tests the interaction of all components.

You will find a comprehensive overview of ALPHA 8HP at our Siemens channel under "ALPHA 8HP":

[www.siemens.com/lowvoltage/videos](http://www.siemens.com/lowvoltage/videos)

### Benefits

All enclosures and the non-transparent covers are made of glass-fiber reinforced polyester – the transparent covers are made of polycarbonate.



The optimum design of these high-quality materials fulfills all the demands made on modern distribution systems. This includes:

- Corrosion resistance
- Mechanical strength
- Easy workability
- Temperature resistance
- Flame retarding and self-extinguishing properties
- UV-resistance and component protection
- Durability
- Halogen-free (except for support rack paneling)

This makes ALPHA 8HP ideal for harsh ambient conditions, offering optimum protection for your installed devices.

We also offer configuration software free of charge:

- Configure your plants quickly, simply and conveniently on-screen with SIMARIS ConFigure Basic
- This software can be downloaded on the Internet at: [www.siemens.com/scfb](http://www.siemens.com/scfb)

### Application

Degree of protection IP65 makes ALPHA 8HP suitable for all applications where particularly high demands are made on ambient conditions. The modular design allows you to expand the system at will. We also offer a comprehensive accessories pack for outdoor applications.

This makes ALPHA 8HP ideal for:

- Industrial environments
- Commercial buildings
- Power plants
- Large public and private buildings
- Public utility companies
- Solar applications

ALPHA 8HP is tested and certified according to recognized national and international standards. This makes the system ideal for the export of industrial goods in the fields of mechanical engineering, agriculture, etc.



Russia



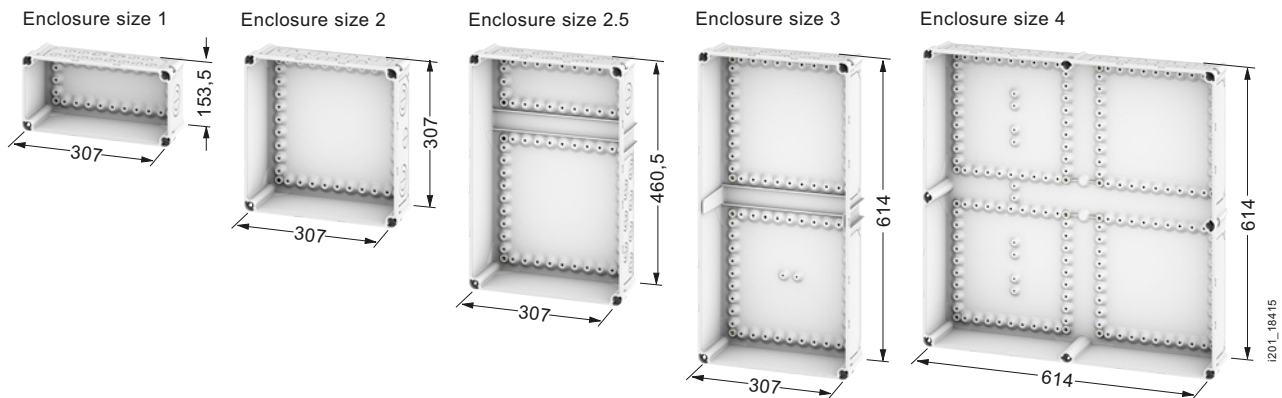
USA

<sup>1)</sup> Empty enclosure without assembly kits

## Design

The distribution system comprises 5 enclosure sizes with a basic size of 307 mm.

The enclosures have removable knockouts for flange openings and for cable entries, which means that these enclosures can be used for both distribution board applications and stand-alone installation.



The covers are available in non-transparent or transparent versions and have quick-acting locks for tool actuation. These can be replaced with locks for manual actuation.

The enclosures have a mounting depth of 147 mm. For enclosure size 2 there is also a cover for a mounting depth of 212 mm, and for enclosure size 2.5 there is a transparent cover for a mounting depth of 185 mm.

Intermediate frames can be used to increase the mounting depth of size 3 and 4 enclosures. Several intermediate frames can be used together. Each intermediate frame increases the mounting depth by 92.5 mm.

You will find our product videos on ALPHA 8HP on the Siemens channel at:

[www.siemens.com/lowvoltage/videos](http://www.siemens.com/lowvoltage/videos)





## Molded-Plastic Distribution Systems

### ALPHA 8HP Molded-Plastic Distribution Systems

#### Meter enclosures

#### Overview


- Enclosure incl. support rails for meters or ISO meter support plate with meter fixing screws
- Spacer bolts (15 mm) for raising the meter support plates are included in delivery if cables are routed underneath

| Enclosure size  | Mounting depth<br>mm | Complete enclosures<br>(delivery in individual components) | Individual components   |  |
|---|----------------------|--|---|--|
|   |                      | Type   | Designation   | Type                                     |
|  | 145                  | 8HP2627  | Enclosure base part<br>Transparent cover for mounting depth 145 mm<br>ISO meter support plate                       | 8HP1107<br>8HP1227<br>8HP6111            |
|   | 183                  | 8HP2647  | Enclosure base part<br>Transparent cover for mounting depth 183 mm<br>ISO meter support plate                       | 8HP1107<br>8HP1247<br>8HP6111            |
| 2.5   | 145                  | 8HP2623  | Enclosure base part<br>Transparent cover for mounting depth 145 mm<br>ISO meter support plate                       | 8HP1103<br>8HP1223<br>8HP6112            |
|   | 237                  | 8HP2653  | Enclosure base part<br>Transparent cover for mounting depth 145 mm<br>Intermediate frame<br>ISO meter support plate | 8HP1103<br>8HP1223<br>8HP1283<br>8HP6112 |
|  | 145                  | 8HP2623  | Enclosure base part<br>Transparent cover for mounting depth 145 mm<br>ISO meter support plate                       | 8HP1103<br>8HP1223<br>8HP6112            |
|   | 237                  | 8HP2653  | Enclosure base part<br>Transparent cover for mounting depth 145 mm<br>Intermediate frame<br>ISO meter support plate | 8HP1103<br>8HP1223<br>8HP1283<br>8HP6112 |

#### Selection and ordering data


| Version | DT | Article No.<br><a href="http://www.siemens.com/product?ArticleNo.">www.siemens.com/<br/>product?Article No.</a> | Price<br>per PU | PU<br>(UNIT,<br>SET, M) | PS*/<br>P. unit | PG |
|---------|----|---|-----------------|-------------------------|-----------------|----|
|---------|----|---|-----------------|-------------------------|-----------------|----|

#### Complete models

|  | Meter enclosures |                      | Article No. | Price per PU | PU (UNIT, SET, M) | PS*/P. unit | PG |
|---|------------------|----------------------|-------------|--------------|-------------------|-------------|----|
|   | Enclosure size   | Mounting depth in mm |             |              |                   |             |    |
| 2.5   | 145              | 8HP2627              | 1           | 1 unit       | 046               |             |    |
|   | 183              | 8HP2647              | 1           | 1 unit       | 046               |             |    |
| 3   | 145              | 8HP2623              | 1           | 1 unit       | 046               |             |    |
|   | 237              | 8HP2653              | 1           | 1 unit       | 046               |             |    |

8HP2623

#### Assembly kits

|  | ISO meter support plates                                       |          | Article No. | Price per PU | PU (UNIT, SET, M) | PS*/P. unit | PG |
|---|--|----------|-------------|--------------|-------------------|-------------|----|
|   | With meter fixing screws to DIN 46300 and spacer bolts (15 mm) | Versions |             |              |                   |             |    |
| 8HP6112   | • For enclosure size 2.5                                       | 8HP6111  | 1           | 1 unit       | 046               |             |    |
|   | • For enclosure sizes 3 and 4                                  | 8HP6112  | 1           | 1 unit       | 046               |             |    |

8HP6112