

Loadcentres

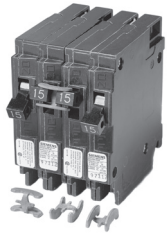
Accessories

Selection

INSTA WIRE™

Selection and Ordering Data

Catalogue Number	Description	Std. Pkg.
Tie Handle		
ECQTH2	QT Dual Tie Handle-Floating	25
ECQTH3	Q 2-Pole Tie Handle	50
QTH4	QT Dual Tie Handle - Bar Type	5
Blocking Device		
ECQL1	Handle Blocking Device (1,2 or 3 Pole)	10
ECQLD3	Padlocking Device (1,2 or 3 Pole) for full module breakers	
ECPLD1	Padlocking Device (1 Pole) for Twin type breakers	3
ECPLD2	Padlocking Device (2 Pole) for Quad type breakers	
Lock		
ECQFL2	Add-A-Lock (all EQ Loadcentres)	1
Neutral Lug Kits		
LK2	No. 4-2/0 CU/AL	1
LK3	No. 1-300 MCM CU/AL	
LK4	No. 1-400 MCM CU/AL	
Lug Kit[®]		
ECLK2225	No. 2-300 MCM CU/AL	1
Miscellaneous		
QF3	Three 1-Pole Fillers	1
SL3	Sliding Latch	
IG21	Insulated Ground Bar Kit	
Truck-Kit	Contractor Truck Kit	
Door Kits[®]		
DK8-A DK12-A DK16-A DK24-A DKL32-2A DKL40-2A	For EQL manufactured after Jan. 92	1
DK24SM-1 DK32SM-1 DK24SM DK32SM DK1216SM-1	For SEQ manufactured after July 00	1
DKS24-2A DKS32-2A DKS40-1A DKS40-2A	For SEQ manufactured after Jan. 92	1
TRIMSCK1 CIRNOLA32 CIRNOLA40 DIRLBLK-EQLSEQ DIRLBLK-SM	Screws for trims Circuit labels up to 32 circuits for SEQ 125A Circuit labels up to 40 circuits Directory labels EQL, SEQ Directory labels SEQ side mounted NMMB	



ECQTH2



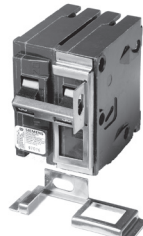
ECQTH3



QTH4



ECQL1



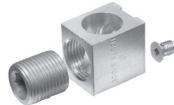
ECQLD3



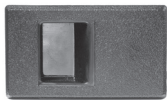
ECQFL2



LK2



LK3



SL3



Truck Kit



IG21

©These lug kits simply plug on to the bus of any SEQ or EQL Loadcentre as sub-feed or through-feed lugs to take advantage of CEC Rule 14-100 (c).

©All door kits are available in Grey, White, Beige colours.