

Meter Centers

Tap Box Service Entrance Modules

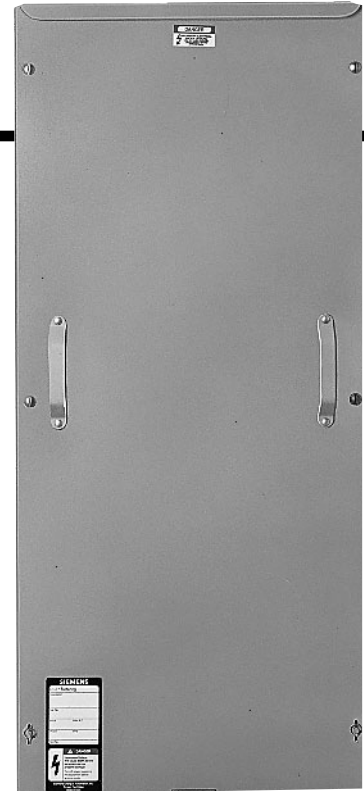
FEATURES

- UL Listed for 60/75° C conductors.
See equipment markings for applications.

Series Tested Systems

Specify Siemens Modular Metering equipment in conjunction with Siemens Load Centers.

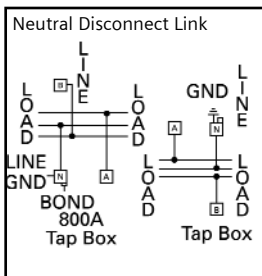
Maximum Interrupting Rating	Ampere Rating	Indoor Enclosure Type 1 Indoor Catalog Number	Outdoor Enclosure Type 3R Outdoor Catalog Number
1 PHASE, 3 WIRE SN, INCOMING		120/240 VOLT AC	
100,000	800	MTB8U	WMTB8U
100,000	1200	MTB12U	WMTB12U
100,000	1600	MTB16U	WMTB16U
3 PHASE, 4 WIRE SN, INCOMING		120/240 or 120/208 VOLT AC	
100,000	800	MTB84U	WMTB84U
100,000	1200	MTB124U	WMTB124U
100,000	1600	MTB164U	WMTB164U



Service Entrance Modules

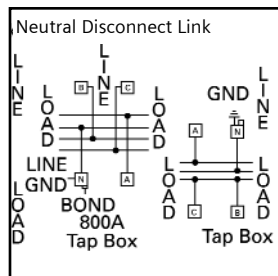
OUTDOOR

1 PHASE, 3 WIRE, INCOMING



OUTDOOR

3 PHASE, 4 WIRE, INCOMING

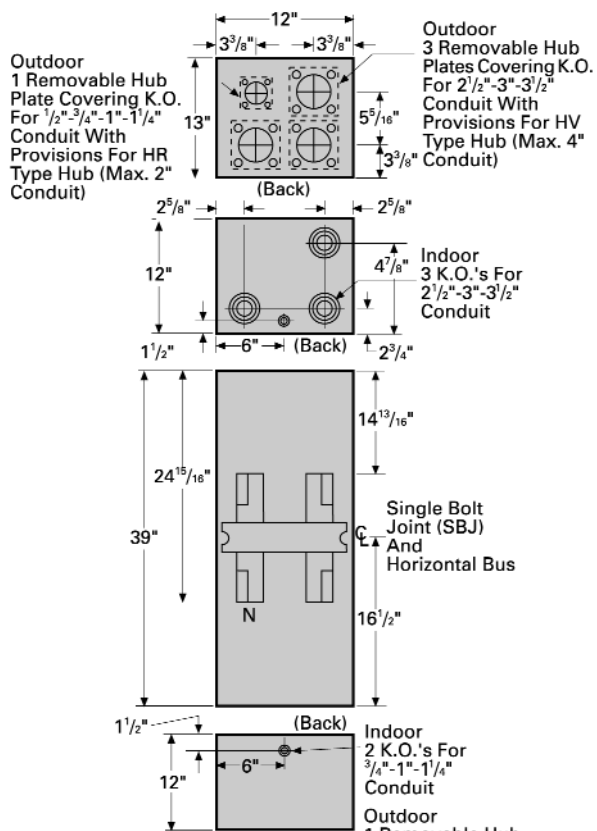


fastfax

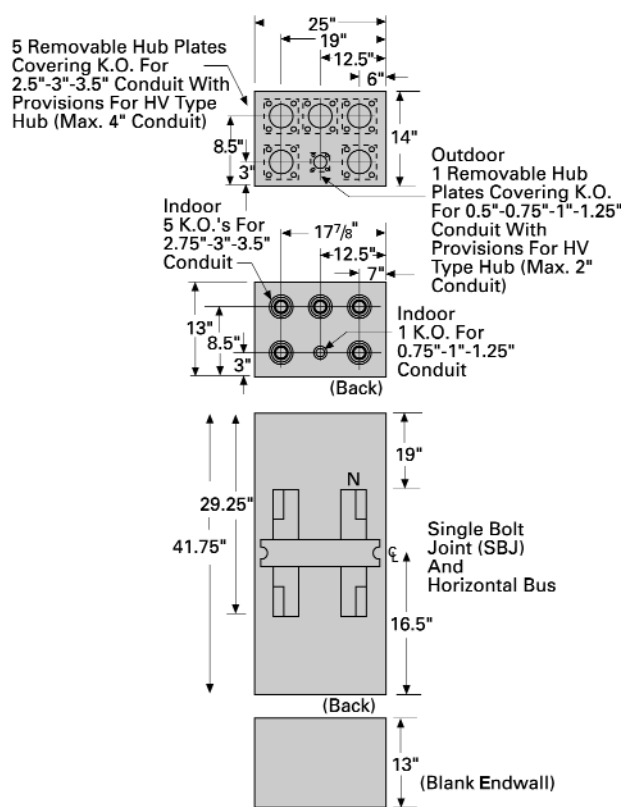
SIEMENS

Pull - Tap Box Service Entrance Modules

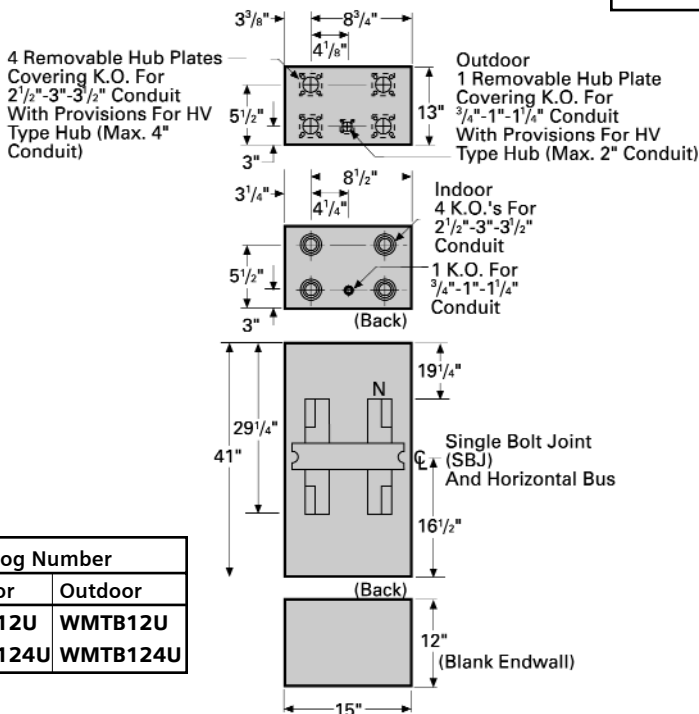
Dimensions (in inches)



Catalog Number	
Indoor	Outdoor
MTB8U	WMTB8U
MTB84U	WMTB84U



Catalog Number	
Indoor	Outdoor
MTB16U	WMTB16U
MTB164U	WMTB164U



Catalog Number	
Indoor	Outdoor
MTB12U	WMTB12U
MTB124U	WMTB124U

