

Disconnect Switches

Type MCS (30-200A)—Accessories

Selection

Auxiliary Switch Kits

Switch Catalog Number	Contact Arrangement			
	1 NO/1 NC		2 NO/2 NC	
	Catalog Number	List Price \$	Catalog Number	List Price \$
MCS603R	MCSAKR136		MCSAKR236	
MCS603L	MCSAKL136		MCSAKL236▲	
MCS606R	MCSAKR136		MCSAKR236	
MCS606L	MCSAKL136		MCSAKL236▲	
MCS610R	MCSAK116		MCSAK216	
MCS610L	MCSAK116		MCSAK216	
MCS620R	MCSAK126		MCSAK226	
MCS620L	MCSAK126		MCSAK226	

Class R Fuse Conversion Kits

Fuse Clip Rating	Catalog Number	List Price Each \$
100A, 600V	SSRK33	
200A, 600V	SSRK34	
400A, 600V	SSRK35	

Fuse Ejector Kits

Switch Catalog Number	Fuse Ejector Kit Catalog Number	List Price Each \$
MCS610	FE100▲	
MCS620	FE200▲	

Handle Operators

Fixed Depth, Flange Mounted, Types 1, 3, 3R, 12^{①④}

Switch Catalog Number	Complete Handle Mechanism		Handle Only		Switch Operator Only	
	Catalog Number	List Price \$	Catalog Number	List Price \$	Catalog Number	List Price \$
MCS603R	FDFS06R		FDH10		FDS06R	
MCS603L	FDFS06L		FDH10		FDS06L	
MCS606R	FDFS06R		FDH10		FDS06R	
MCS606L	FDFS06L		FDH10		FDS06L	
MCS610R	FDFS06R		FDH10		FDS06R	
MCS610L	FDFS06L		FDH10		FDS06L	
MCS620R	FDFS20R		FDH20		FDS20R	
MCS620L	FDFS20L		FDH20		FDS20L	

Variable Depth, Flange Mounted Max-Flex™, Types 1, 3, 3R, 12^②

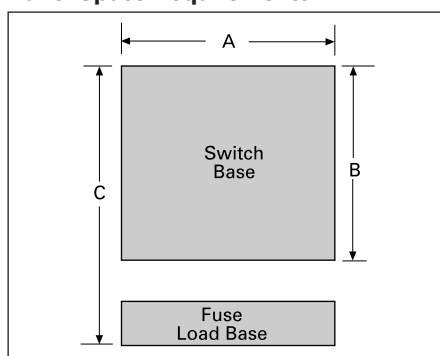
Switch Catalog Number	Complete Handle Mechanism		Handle Only		Switch Operator Only		Cable Only ^③	
	Catalog Number	List Price \$	Catalog Number	List Price \$	Catalog Number	List Price \$	Catalog Number	List Price \$
MCS603R	FHOS06036R		FHOHS		FHOS06R		FHOEC036	
MCS603L	FHOS06036L		FHOHS		FHOS06L		FHOEC036	
MCS606R	FHOS06036R		FHOHS		FHOS06R		FHOEC036	
MCS606L	FHOS06036L		FHOHS		FHOS06L		FHOEC036	
MCS610R	FHOS06036R		FHOHS		FHOS06R		FHOEC036	
MCS610L	FHOS06036L		FHOHS		FHOS06L		FHOEC036	
MCS620R	FHOS20036R		FHOHS		FHOS20R		FHOJC036	
MCS620L	FHOS20036L		FHOHS		FHOS20L		FHOJC036	

Variable Depth Rotary, Through-The-Door-Mounted, Types 1, 12^{④⑤}

Variable Depth						Shaft Only Variable Depth		
MCS603R	CRHOS06VD		CRHOH		RHOS06		RHOSVD	
MCS606R	CRHOS06VD		CRHOH		RHOS06		RHOSVD	
MCS610R	CRHOS06VD		CRHOH		RHOS06		RHOSVD	
MCS620R	CRHOS20VD		CRHOH		RHOS20		RHOSVD	

MCS Disconnect Switch Panel Space Requirements

Panel Space Requirements



Minimum Dimensions (inches*)

Switch Catalog Number	Size	Minimum Dimensions (inches*)			Fuse Class
		"A"	"B"	"C"	
MCS603	30A/240V	6.13	5.52	8.11	H, K, R
	30A/600V	6.13	5.52	10.11	H, K, R
	30A/600V	6.13	5.52	8.48	J
MCS606	60A/240V	6.13	5.52	7.86	H, K, R
	60A/600V	6.13	5.52	10.38	H, K, R
	60A/600V	6.13	5.52	8.35	J
MCS610	100A/240V	7.38	7.59	11.85	H, K, R
	100A/600V	7.38	7.59	13.85	H, K, R
	100A/600V	7.38	7.59	10.6	J
MCS620	200A/240V	9.17	9.00	14.7	H, K, R
	200A/600V	9.17	9.00	17.2	H, K, R
	200A/600V	9.17	9.00	13.32	J

"A" – Dimension is measured from each cross bail pin.

"B" – Dimension is measured from line side barrier to load side barrier.

"C" – Dimension is measured from line side terminal of switch to load side terminal of fuse load base.

▲ Built to order. Allow 6–8 weeks for delivery.
 ① For Type 4 and 4X applications, order handle only Catalog Number 100A - FDH104
 200A - FDH204
 ② For Type 4 and 4X applications, order handle only Catalog Number FHOHS4.

③ Standard cable length is 36 inches. Alternate lengths are available as follows:

Length	Amps	Cat. No.	List Price
24"	30–100	FHOEC024	
48"	30–100	FHOEC048	
60"	30–100	FHOEC060	
48"	200	FHOJC048	
60"	200	FHOJC060	

④ For Type 4 and 4X applications, order handle only Catalog Number RHOH4.
 ⑤ For Type 3 and 3R applications, order handle only Catalog Number RHOH.
 ⑥ Min. enclosure depth from mounting pan to handle mounting surfaces: 30-100A 6.44 inches
 200A 10.93 inches
 *For millimeters multiply inches by 25.4.