

Meter Centers

Fusible Switch Service Entrance Modules

FEATURES

- UL Listed for 60/75°C conductors.
See equipment markings for applications.

Series Tested Systems

Specify Siemens Modular Metering equipment in conjunction with Siemens Load Centers.

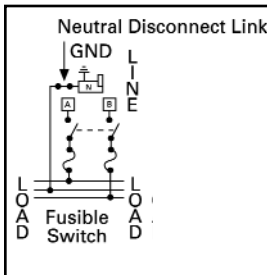
Maximum Interrupting Rating	Ampere Rating	Indoor Enclosure Type 1 Indoor Catalog Number	Outdoor Enclosure Type 3R Outdoor Catalog Number	Fuse Type
1 PHASE, 3 WIRE SN, INCOMING		120/240 VOLT AC		
100,000	200	MP02U	WMP02U	T
100,000	400	MS4U	WMS4U	T
100,000	600	MS6U	WMS6U	T
100,000	800	MS8U	WMS8U	T
100,000	1200	MS12U	WMS12U	T
3 PHASE, 4 WIRE SN, INCOMING		120/240 or 120/208 VOLT AC		
100,000	200	MP024U	WMP024U	T
100,000	400	MS44U	WMS44U	T
100,000	600	MS64U	WMS64U	T
100,000	800	MS84U	WMS84U	T
100,000	1200	MS124U	WMS124U	T



Service Entrance Modules

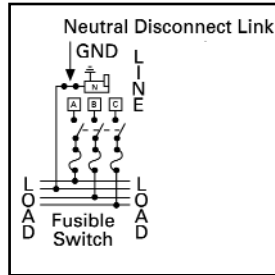
OUTDOOR

1 PHASE, 3 WIRE, INCOMING
200-800 AMP



OUTDOOR

3 PHASE, 4 WIRE, INCOMING
200-800 AMP



fastfax

SIEMENS