



## FEATURED PRODUCTS

Pre-Terminated Trunk Cables **B51**

Harnesses **B55**

Array Cords **B58**

Premium & Economy Fiber Optic Cable Assemblies **B59**

# Pre-Terminated Cable Assemblies

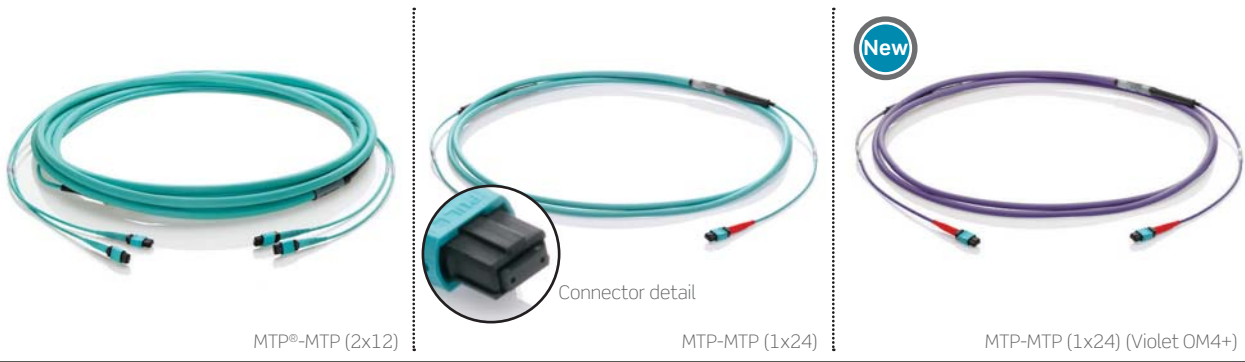
Simplify fiber connection and termination with Leviton cable assemblies.

Choose from a wide selection of patch cords, and take advantage of our Secure Keyed LC and Opt-X® Unity 40/100G assemblies to protect and future-proof your critical networks. Pre-terminated trunk cables and harnesses, plus multimode, single-mode, and pigtail assemblies are all made to customer specifications.

Choose cable type, connector combinations, length, mode, and more.

Configure online at [Leviton.com/configurator](https://leviton.com/configurator).

# PRE-TERMINATED CABLE ASSEMBLIES | Pre-Term. Trunk Cables > Opt-X® Unity 40/100G



## OPT-X UNITY 40/100G PRE-TERMINATED TRUNK CABLES

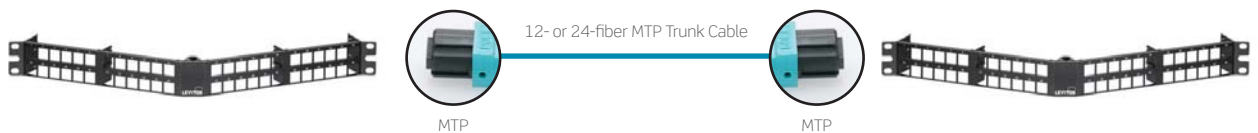
- MTP-to-MTP trunk cables support 40/100G speeds
- Terminations available in 8-, 12-, and 24-fiber configurations
- Migration solution to 40/100G from existing 10G networks with premium 12-fiber MTP trunk configuration
- Up to 70% faster install than field-terminated trunks
- MTP polarity options are TIA methods A, B, or C (Method B is standard)
- 100 percent factory tested, with test results included for each assembly
- All assemblies labeled with serial number and length for traceability and easy re-order



See page B8 for Opt-X Unity 40/100G system overview.

CONNECTOR MATED PAIRS	MULTIMODE						SINGLE-MODE		
	DUPLEX TYPICAL IL	DUPLEX MAX IL	12-FIBER STANDARD TYPICAL IL	12-FIBER STANDARD MAX IL	8- & 12-FIBER ULL	24-FIBER PREMIUM MAX IL	STANDARD TYPICAL IL	STANDARD MAX IL	12- & 24-FIBER PREMIUM MAX IL
LC	0.15	0.25	—	—	—	—	0.25	0.35	—
MTP	—	—	0.30	0.35	0.20	0.35	—	0.75	0.35

## SPOTLIGHT Migration Path to 40G & 100G



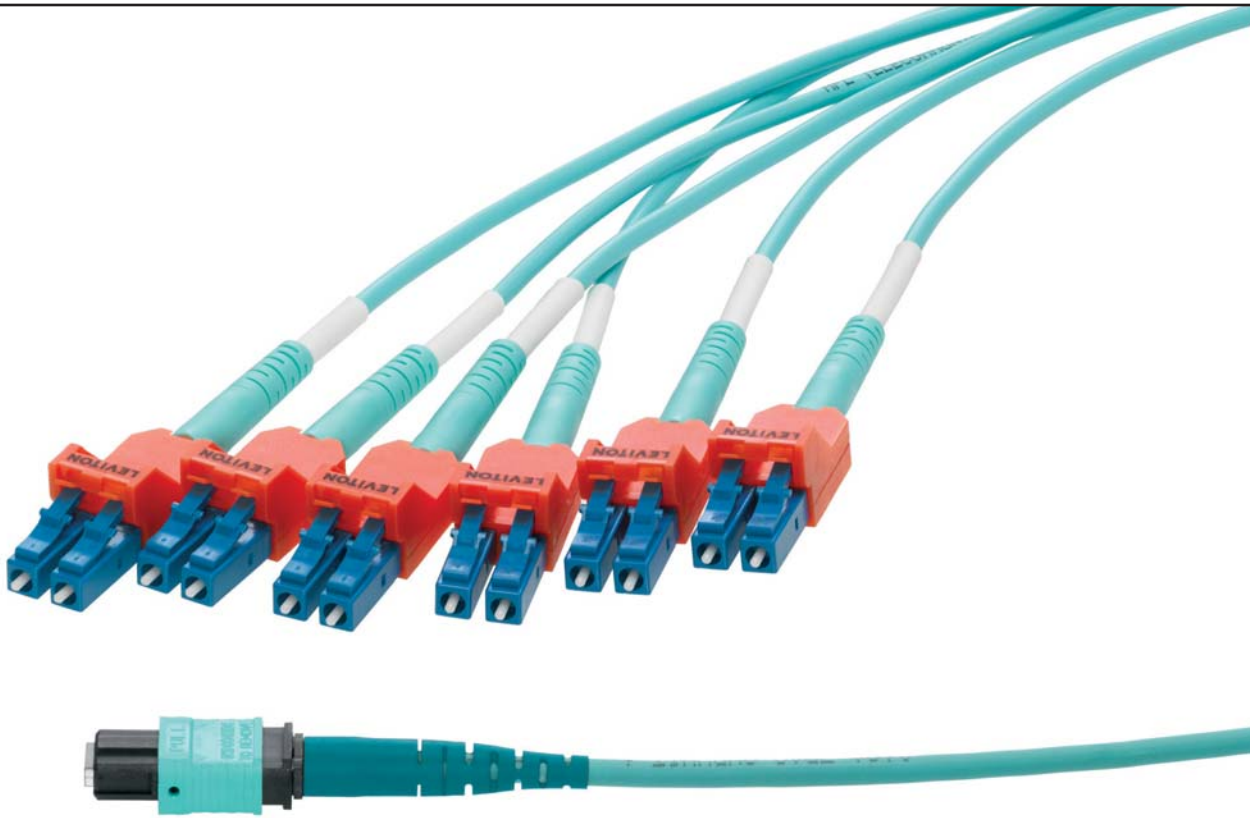
Leviton pre-terminated MTP solutions offer an ideal migration path from 10G to 40G and 100G channels. The Opt-X Unity 40/100G system features MTP trunks, harnesses, array cords, adapter plates, and cassettes to help future-proof your networks. The Opt-X Unity system is fully compatible with UHD, HD, SD, and e2XHD (shown) footprints.



**10G**  
Leviton components for a 10G channel include MTP-LC SDX, e2XHD, or HDX cassettes, and LC duplex patch cords.

**40G**  
Migration from 10G to a 40G system replaces LC with MTP components, such as 2x12-fiber to 3x8-fiber MTP cassettes and 8-fiber MTP array cords.

**100G**  
Moving from 40G to 100G replaces MTP cassettes with MTP adapter plates and uses 24-fiber MTP array cords.



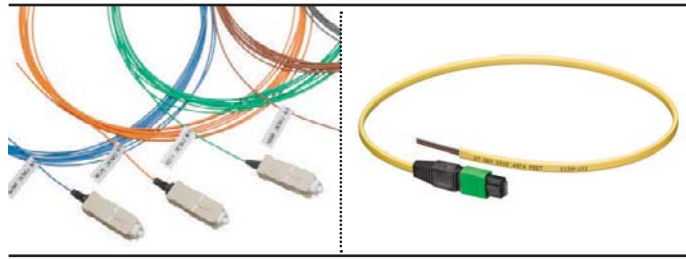
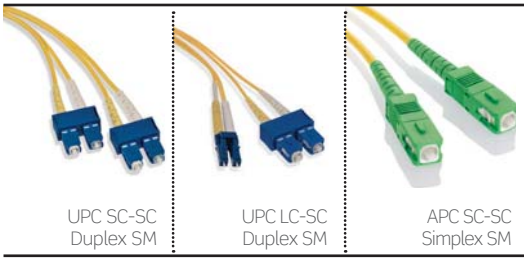
Secure Keyed MTP®-LC Harness

### SECURE KEYED LC HARNESSES

- Locking design prevents unauthorized and inadvertent moves, adds, and changes
- Duplex LC connectors can only be removed with matching-color extraction tool
- Choose from eight colors to segregate and secure networks
- Duplex LC connectors plug into any industry-compliant LC adapter or interface
- Polarity is A to A
- Harnesses are part of the Leviton Make-to-Order (MTO) program

SECURE KEYED LC MTP-LC HARNESS OPTIONS					
KEYED COLOR	FIBER TYPE	FIBER COUNT	TERMINATION	CABLE LENGTH (FEET)	1ST & 2ND BREAKOUT (INCHES)
• White	• OS2	• 12	<b>FIRST END</b>	• 3	• 0-48
• Yellow	• OM2	• 24	• MTP (female) (standard)	• 5	
• Orange	• OM1		• MTP (male)	• 6	
• Red	• OM3		<b>SECOND END</b>	• 8	
• Blue	• OM4 (Aqua)		• Secure Keyed LC Duplex (uni-body)	• Other	
• Green	• OM4+ (Violet)				
• Slate					
• Black					

For assistance customizing your harnesses, please call Tech Support at (800) 824 3005.



**ECONOMY SINGLE-MODE PATCH CORDS**

- Available in standard LC, SC, ST, or hybrid options
- Riser-rated, duplex zip-cord single-mode cable
- UPC or APC polish-style connectors
- < 0.3 dB insertion loss, -55 dB (UPC) / -65 dB (APC) return loss
- Low-Smoke Zero-Halogen (LSZH) OS2 available by special order

9/125 μM SINGLE-MODE PATCH CORDS (OS2)	
DESCRIPTION	DUPLEX
LC-LC	UPDLC-S**
SC-LC	UPDCL-S**
SC-SC	UPDSC-S**
SC-ST	UPDCT-S**
ST-ST	UPDST-S**

\*\* = Length in meters. (01), (02), (03), (05), (10)

APC SINGLE-MODE PATCH CORDS (OS2)		
DESCRIPTION	LENGTH (METERS)	SIMPLEX
SC-SC*	1	APSSC-S01
SC-SC*	2	APSSC-S02
SC-SC*	3	APSSC-S03
SC-SC*	5	APSSC-S05
SC-SC*	10	APSSC-S10

\* = Minimum order quantities and lead times may apply.

Contact inside sales at (800) 722 2082 for 6-fiber pigtail kits, other configurations, or custom lengths.

**ECONOMY PIGTAILS**

- Available in LC, SC, or ST connector styles
- Multimode, laser-optimized multimode, or single-mode fiber types
- Stock available for white 900 μm buffer in 3-meter length
- Application use: fusion or mechanical splicing
- 12-fiber color-coded pigtail kit, colors per ANSI/TIA-598-C

MULTIMODE PIGTAIL - SIMPLEX (3 METERS)			
DESCRIPTION	LC	SC	ST
62.5/125 μm, OM1	62PLC-M03	62PSC-M03	62PST-M03
50/125 μm, OM2	50PLC-M03	50PSC-M03	50PST-M03
50/125 μm, LOMM, OM3	5LPLC-M03	5LPSC-M03	5LPST-M03
50/125, LOMM, OM4	54PLC-M03	—	—

12-FIBER INDIVIDUAL COLOR-CODED PIGTAIL KITS (3 METERS)			
62.5/125 μm, OM1	62PLC-KIT	62PSC-KIT	62PST-KIT
50/125 μm, OM2	50PLC-KIT	50PSC-KIT	50PST-KIT
50/125 μm LOMM, OM3	5LPLC-KIT	5LPSC-KIT	—
50/125 μm LOMM, OM4	54PLC-KIT	—	—
UPC Polish SM, OS2	UPPLC-KIT	UPPSC-KIT	—

SINGLE-MODE PIGTAIL - SIMPLEX (3 METERS)			
UPC polish	UPPLC-S03	UPPSC-S03	UPPST-S03
APC polish	APPLC-S03	APPSC-S03	—

12-FIBER MTP® JACKETED-RIBBON PIGTAIL KITS (3 METERS)		
DESCRIPTION	FEMALE	MALE
Standard Loss, OM3*	LJ2PS-03M	LJ2PT-03M
Low Loss, OM3*	LJ2PL-03M	LJ2PK-03M
Standard Loss, OM4*	4J2PS-03M	4J2PT-03M
Low Loss, OM4*	4J2PL-03M	4J2PK-03M
Standard Loss, OS2*	UJ2PS-03M	UJ2PT-03M
Low Loss, OS2*	UJ2PL-03M	UJ2PK-03M

\* = Minimum order quantities and lead times may apply.