

**CFL** | Ceiling | GU24 and Occupancy Sensor | Long Twin Tube with 2G11 Base

## CFL Ceiling Lampholders

### Occupancy Sensor Fluorescent Ceiling Lampholders

Automatically turns light on when sensing motion.

#### Occupancy Sensor Fluorescent Ceiling Lampholders

Description	Rating	Cat. No.
Lampholder with 13W Lamp Guard	13W 120VAC, 60Hz	<a href="#">9863-OCC</a>
Lampholder with 13W Lamp and Lamp Guard	13W 120VAC, 60Hz	<a href="#">9863-SEN</a>

Note: Ceiling Mount only.

Note: Not intended for use with incandescent lamps, dimmers or occupancy sensors



9863

## Long Twin Tube with 2G11 Base – Compact Fluorescent Lampholders

#### Features and Benefits

- Vertical snap-in model allows wires to be routed on either top or bottom of panel
- Two wiring ports per contact speed harness wiring
- Internal shunt models eliminate need for extra jumper wire in fixtures designed for electronic ballasts
- Low-profile design for smaller, more compact fixtures
- Superior metal-spring lamp retainer clips

#### 4-Pin Long Twin-Tube with 2G11 Base – Slide-In Mounting

Description	Rating	Cat. No.
Slide-In for 18-20 Ga. Panels, Quickwire Terminals	660W 600V	<a href="#">13452</a>



13453

#### 4-Pin Long Twin-Tube with 2G11 Base – Bottom or Back Mounting

Description	Rating	Cat. No.
Vertical Snap-In Mounting, Side Push-In Wiring	660W 600V	<a href="#">13453</a>
Same as above, with Internal Shunt Connection for Electronic Ballasts	660W 600V	<a href="#">23453</a>
Horizontal Snap-In Mounting, Bottom Push-In Wiring	660W 600V	<a href="#">13454</a>
Same as above, with Internal Shunt Connection for Electronic Ballasts	660W 600V	<a href="#">23454</a>
Horizontal Screw-Mount, Bottom Push-In Wiring	660W 600V	<a href="#">13455</a>
Same as above, with Internal Shunt Connection for Electronic Ballasts	660W 600V	<a href="#">23455</a>

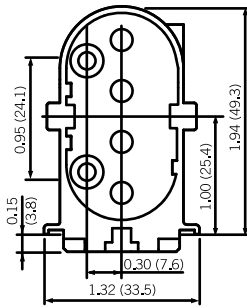


13454

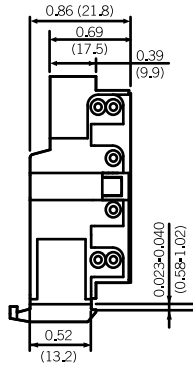


### Dimensions for Long Twin Tube with 2G11 Base

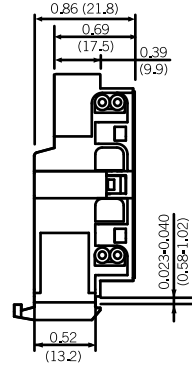
13453 and 23453



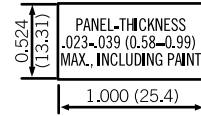
13453



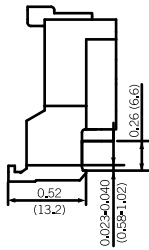
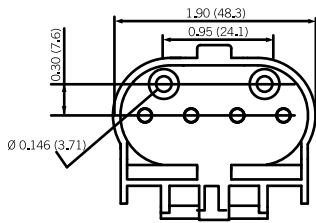
23453



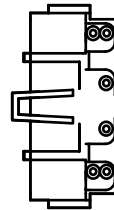
Recommended Panel Opening for 13453, 23453, 13454 and 23454



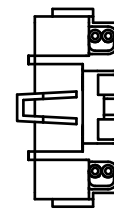
13454 and 23454



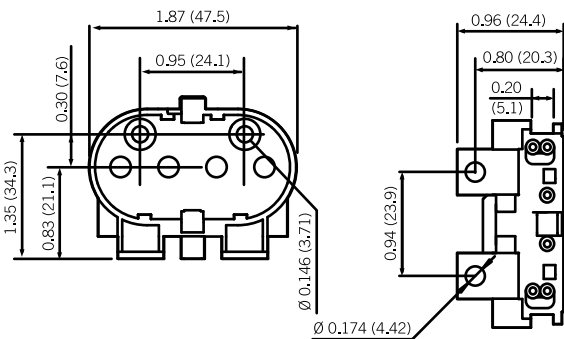
13454



13454



13455 and 23455



23454

