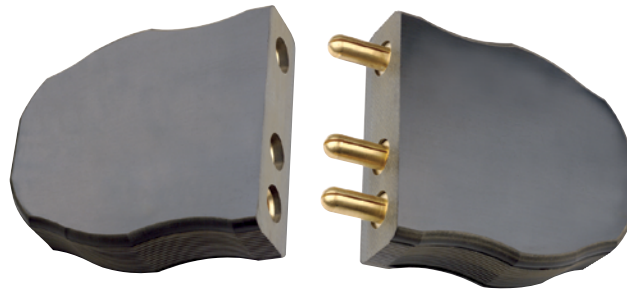


## STAGE PIN DEVICES

### Stage Pin Devices

Conforms to USITT (United States Institute for Theater Technology) S3 Standard for Stage Pin Connectors

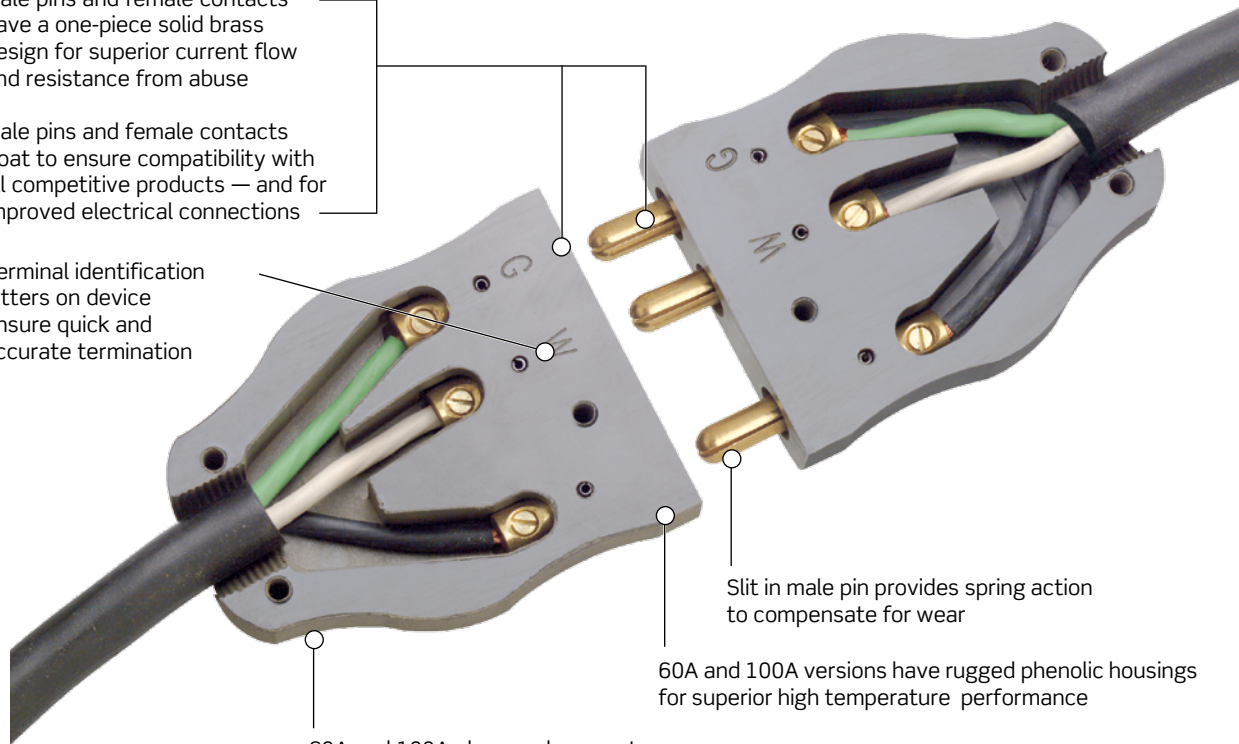
#### 100MP-E



Male pins and female contacts have a one-piece solid brass design for superior current flow and resistance from abuse

Male pins and female contacts float to ensure compatibility with all competitive products — and for improved electrical connections

Terminal identification letters on device ensure quick and accurate termination



Slit in male pin provides spring action to compensate for wear

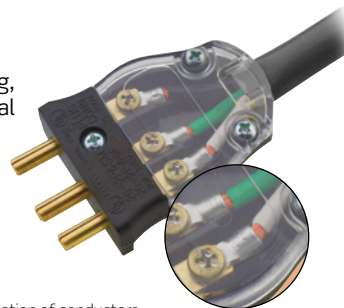
60A and 100A versions have rugged phenolic housings for superior high temperature performance

60A and 100A plugs and connectors have Sure Grip™ edge for easy handling

#### 20MP-CL



Male Plug, Crimp Terminal



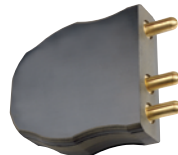
Note: 20 Amp version is available with a clear cover to allow for visual inspection of proper termination of conductors. Other colors available. Consult factory for availability

**20A, 60A, and 100A, 125V Stage Pin Devices**


20MP-CL



20FP-CL



100MP-E


 Male Panel Mount,  
Bolt-On

 Female Panel  
Mount, Snap-In

**20A, 125V, 2-Pole 3-Wire, Grounding**

| Description  | Color                | Cat. No. |
|--|----------------------|----------|
| Male Plug — Screw Terminal                                       | Black                | 20MP-E   |
| Male Plug — Screw Terminal                                       | Black w/ Clear Cover | 20MP-CL  |
| Male Plug — Crimp Terminal                                       | Black                | 20MC-E   |
| Male Plug — Crimp Terminal                                       | Black w/ Clear Cover | 20MC-CL  |
| Female Connector — Screw Terminal                                | Black                | 20FP-E   |
| Female Connector — Screw Terminal                                | Black w/ Clear Cover | 20FP-CL  |
| Female Connector — Crimp Terminal                                | Black                | 20FC-E   |
| Female Connector — Crimp Terminal                                | Black w/ Clear Cover | 20FC-CL  |
| Panel Mount Male Inlet — Set Screw Terminal, Snap-In Mounting    | Black                | 20IS-E   |
| Panel Mount Female Receptacle — Screw Terminal, Snap-In Mounting | Black                | 20RS-E   |

**60A, 125V, 2-Pole 3-Wire, Grounding**

| Description   | Color | Cat. No. |
|---|-------|----------|
| Panel Mount Male Inlet — Set Screw Terminal, Snap-In Mounting | Black | 60IS-E   |
| Panel Mount Male Inlet — Set Screw Terminal, Bolt-On Mounting | Black | 60IB-1E  |

**100A, 125V, 2-Pole 3-Wire, Grounding**

| Description  | Color | Cat. No. |
|--|-------|----------|
| Male Plug — Set Screw Terminal                                       | Black | 100MP-E  |
| Panel Mount Female Receptacle — Set Screw Terminal, Bolt-On Mounting | Black | 100RB-1E |
| Panel Mount Male Inlet — Set Screw Terminal, Bolt-On Mounting        | Black | 100IB-1E |

Note: For 20 Amp male plugs and female connectors, other cover colors are available. Consult factory for availability