

CANDELABRA LAMPHOLDERS

Porcelain with Screw Terminals

E12 Base



INCANDESCENT

20025 Series with Hickey Removable Screw Assembly

White unglazed porcelain body. Aluminum screw shell. Screw terminals. Snap-on lining per UL Standard 1571 is UL approved for 170°C applications.

Standard pack: bulk

- 75W-125V
- UL Listed E-13400

| Cat. No. | Hickey | Extrusion | H Dimension |
|-----------|--------|-----------|------------------|
| 20025 | Solid | Outside | 2 3/32 (53.18) |
| 20025-001 | Solid | Outside | 1 25/32 (45.24) |



20025

Surface Cleat Socket

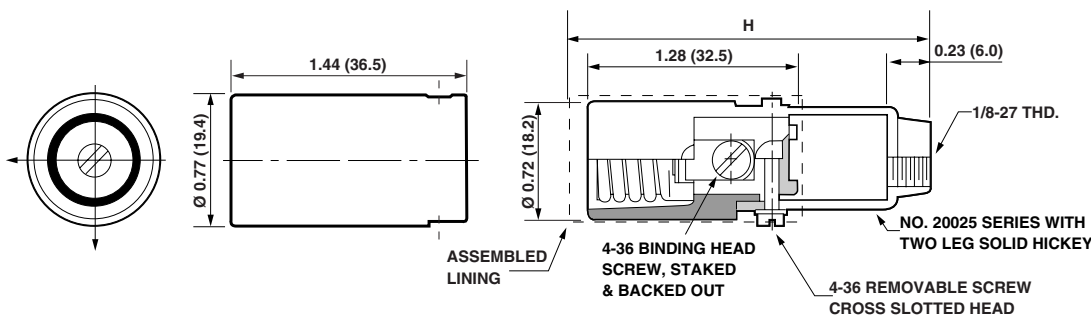
White urea. Base 1 7/16 (36.51) O.D. Height 7/8 (22.23). Two mounting holes on 1 1/8 (28.58) centers accept #4 screws. Aluminum screw shell.

Cat. No. 10028

- 75W-125V



10028



Cat. No. 20025