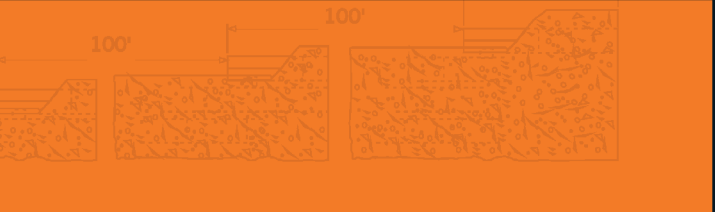
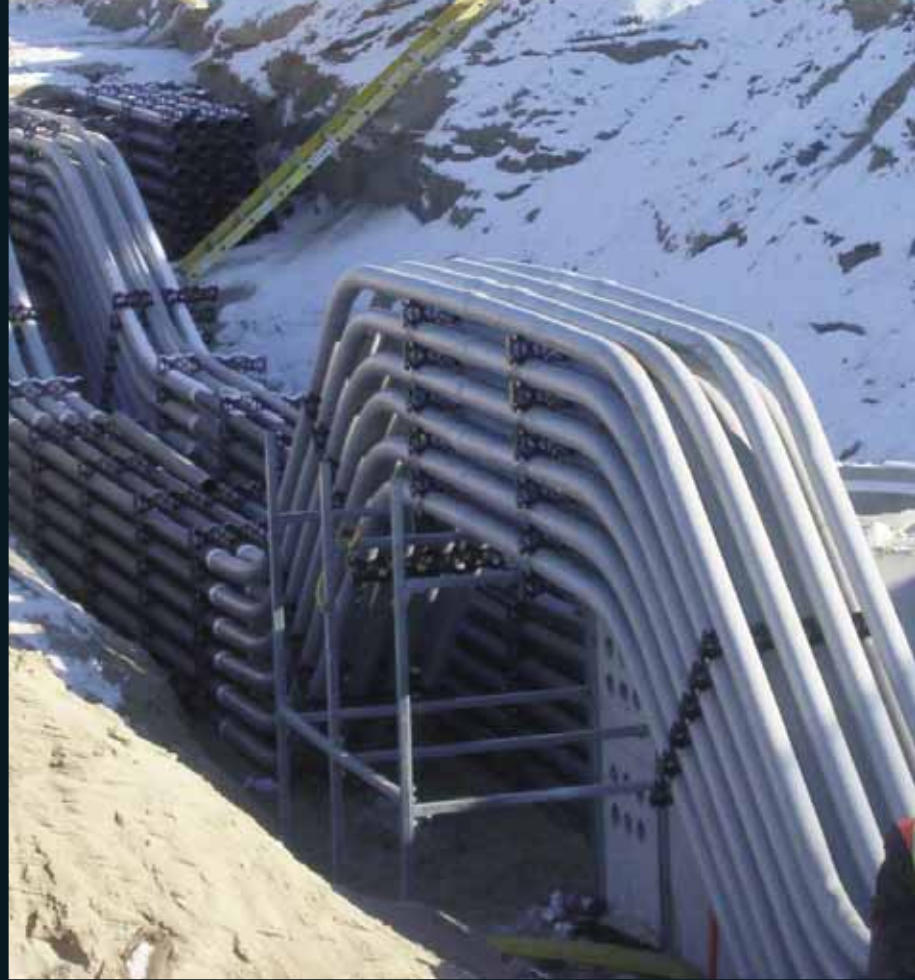
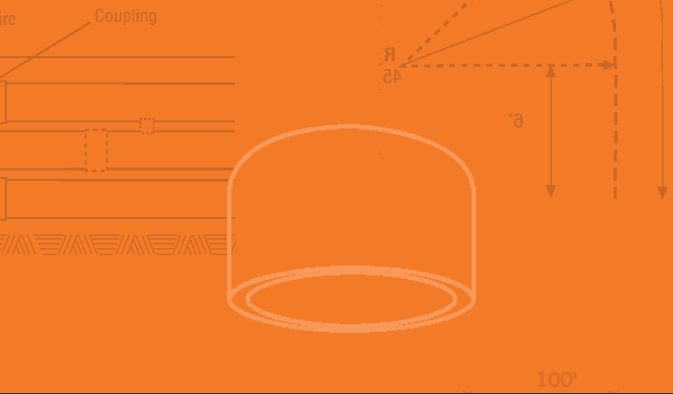
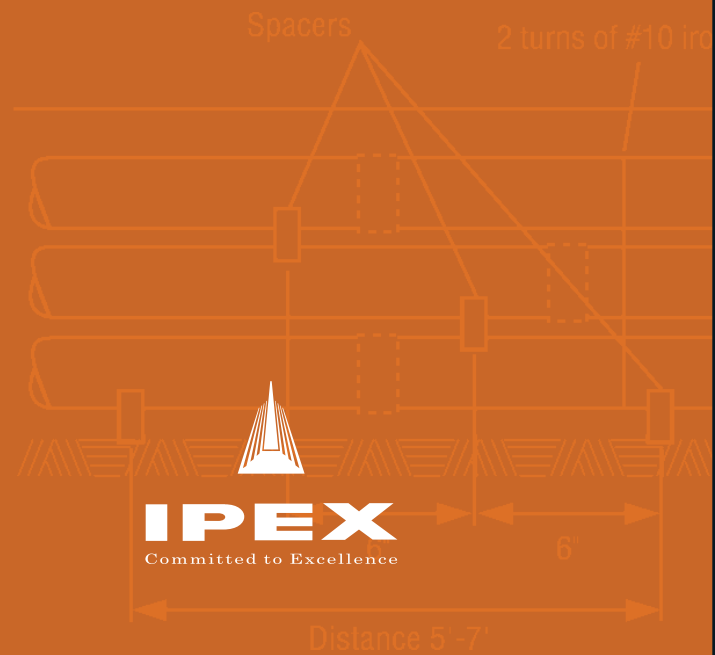


# Power & Communications Duct



**SUPER  
DUCT**

ELECTRICAL SYSTEMS



## POWER AND COMMUNICATIONS DUCT

- Light Weight
- Long Lengths with Bell Ends
- Flexible



We build tough products for tough environments®

## THE PREMIER DUCTING in the market

The premier ducting product on the market, IPEX Super Duct® is specifically engineered and quality manufactured to deliver the high-impact and crush strength demanded by today's utility companies, for underground ducting applications.

Made from a specially formulated compound, Super Duct can withstand high physical loads, while providing the natural flexibility for field bending to accommodate minor changes in elevation or direction. And Super Duct's smooth bore makes cable pulling easier.

Available in trade sizes from 2" to 6" and supplied in 10' or 20' lengths, Super Duct is bell ended for easy assembly in the field using IPEX solvent cement or polyethylene push-fit couplings. Super Duct conforms to the requirements of CSA Standard C22.2 No. 211.1 for encasement in concrete and direct burial.



### SUPER DUCT DIMENSIONS

Dimension		Minimum ID		Nominal Wall		Average OD	
in	mm	in	mm	in	mm	in	mm
2	50	2.001	50.83	.082	2.08	2.250	57.15
3	75	3.000	76.20	.097	2.46	3.250	82.55
3-1/2	90	3.480	88.39	.109	2.77	3.730	94.74
4	100	3.941	100.10	.120	3.05	4.216	107.09
5	125	4.974	126.34	.153	3.89	5.299	134.60
6	150	5.896	149.76	.180	4.57	6.275	159.39

## MARKETS

- UTILITIES
- TELECOM
- HOSPITALS / MEDICAL COMPLEXES
- COMMERCIAL BUILDINGS
- COMMUNICATIONS
- CABLE

## ADVANTAGES

### LIGHT WEIGHT

Super Duct is easy to carry and install, reducing labour requirements and costs.

### LONG LENGTHS

Super Duct is available in 10' (3m) and 20' (6.1m) lengths, minimizing the number of connections needed.

### BELL ENDS

Super Duct is bell-ended, allowing for easy assembly in the field.

### HIGH COMPRESSIVE STRENGTH

Super Duct's specially formulated compound is designed to withstand high loads.

### LOW COEFFICIENT OF FRICTION

The smooth bore of Super Duct facilitates cable pulling and eliminates costly cable damage.

### QUALITY CONTROL

Stringent, continuous testing ensures that Super Duct is a consistently high quality product.

### FIELD BENDING

The natural flexibility of IPEX Super Duct allows field bending, to accommodate minor changes in elevation or direction.



## SUPER DUCT FITTINGS

### 90° Long Sweep Bend

Size (inches)	Part Number	Product Code	Product Code Prairies
2 x 24 R	902024	029091	*129091
2 x 36 R	902036	029092	*129092
2 x 60 R	902060	029036	*129036
3 x 24 R	903024	029055	*129055
3 x 36 R	903036	029093	*129093
3 x 60 R	903060	029134	*129134
3-1/2 x 24 R	903524	029123	*129123
3-1/2 x 36 R	903536	029094	*129094
3-1/2 x 60 R	903560	029135	*129135
4 x 24 R	904024	029047	*129047
4 x 36 R	904036	029095	*129095
4 x 60 R	904060	029096	*129096
5 x 42 R	905042	029097	*129097
5 x 60 R	905060	029037	*129037
6 x 60 R	906060	029098	*129098

\*Product Codes are for the Prairie Provinces only.

### 45° Long Sweep Bend

2 x 24 R	452024	029111	*129111
2 x 36 R	452036	029112	*129112
3 x 24 R	453024	029082	*129082
3 x 36 R	453036	029113	*129113
3-1/2 x 36 R	453536	029114	*129114
4 x 24 R	454024	029128	*129128
4 x 36 R	454036	029115	*129115
4 x 60 R	454060	029116	*129116
5 x 42 R	455042	029117	*129117
6 x 60 R	456060	029118	*129118

\*Product Codes are for the Prairie Provinces only.

### 22 1/2° Long Sweep Bend

3 x 36 R	223036	029085	*129085
4 x 36 R	224036	029204	*129204
5 x 42 R	225042	029249	*129249

\*Product Codes are for the Prairie Provinces only.

Note: Special radius bends are available upon request.

