

# RING-TITE / ENVIRO-TITE PIPING SYSTEMS

Ring-Tite  
4" - 60" (100mm - 1500mm)

Enviro-Tite  
4" - 15" (100mm - 375mm)

## Ring-Tite® Enviro-Tite®

Ring-Tite and Enviro-Tite piping systems are DR35 and DR28 sewer pipes manufactured to demanding ASTM and CSA standards. The two products are identical except for Enviro-Tite having a minimum recycled material content of 50%. Both products have tight joints that can withstand well in excess of both the ASTM and CSA requirements.

### APPLICATIONS

- Gravity Flow Sanitary Sewers
- Storm Sewers
- Sewer Laterals
- Industrial Effluent Lines

### STANDARDS

#### RING-TITE



B182.2



3624-130/135

ASTM  
MEMBER

D3034 & F679

#### ENVIRO-TITE



B182.7



3624-130/135

ASTM  
MEMBER

F1760

### ADVANTAGES

#### 1 Corrosion-proof Performance

IPEX Ring-Tite and Enviro-Tite systems are immune to corrosion from aggressive soils and galvanic action. In addition, H<sub>2</sub>S and other aggressive chemicals common in sanitary sewage have no effect.

#### 2 Tight Joints & Lower Treatment Costs

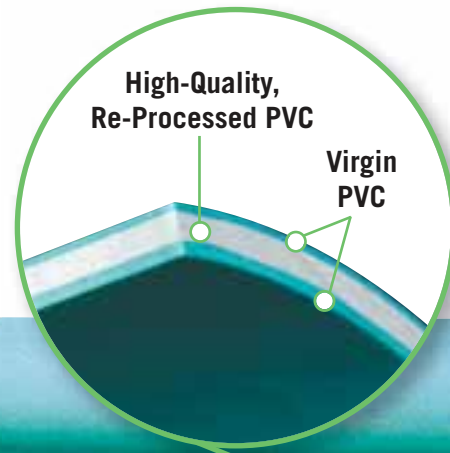
Eliminate infiltration and exfiltration. Ring-Tite and Enviro-Tite joints easily outperform concrete and corrugated PE joints.

#### 3 Third-Party Certification

IPEX Ring-Tite and Enviro-Tite systems are certified to CSA B182.2. Third party certification is your verification that the product will perform as stated.

#### 4 High Flow Capacity

IPEX's PVC pipe and fittings are manufactured with smooth inner walls and provide systems with a Manning coefficient of 0.009, allowing for use of smaller diameters of pipe when compared to rough walled pipe.



Enviro-Tite®

## SHORT FORM SPECIFICATIONS

### GENERAL

Main line sewers will be PVC DR35 sewer pipe and shall be in compliance with ASTM D3034 or ASTM F1760 and third-party certified to CSA B182.2. Sewer laterals will be PVC DR28 sewer pipe and shall be third-party certified by CSA as above.

### JOINTS

Sealing gaskets must meet the requirements of ASTM D3034 or ASTM F1760 or CSA B182.2. In addition, the pipe joints must be able to withstand a minimum hydrostatic pressure of 50 psi (345 kPa) without leakage.

### PIPE STIFFNESS

The minimum ring stiffness shall be 46 psi (320 kPa) for DR35 pipe and 90 psi (625 kPa) for DR 28. This stiffness will be determined using the test methods prescribed by ASTM D3034 and ASTM F1760.

### FITTINGS

Injection-moulded gasketed PVC fittings shall meet the requirements of ASTM D3034 and ASTM F1336 and shall be certified to CSA B182.1 or CSA B182.2. Fabricated fittings must conform to ASTM F1336 and CSA B182.2.



## DIMENSIONS

|             | Nominal Size |      | Average I.D. |         | Min Wall Thickness |       | Average O.D. |         |
|-------------|--------------|------|--------------|---------|--------------------|-------|--------------|---------|
|             | in           | mm   | in           | mm      | in                 | mm    | in           | mm      |
| <b>DR35</b> |              |      |              |         |                    |       |              |         |
|             | 4            | 100  | 3.97         | 100.94  | 0.12               | 3.06  | 4.21         | 107.06  |
|             | 5            | 135  | 5.32         | 135.08  | 0.16               | 4.09  | 5.64         | 143.26  |
|             | 6            | 150  | 5.92         | 150.29  | 0.18               | 4.55  | 6.28         | 159.39  |
|             | 8            | 200  | 7.92         | 201.16  | 0.24               | 6.10  | 8.40         | 213.36  |
|             | 10           | 250  | 9.90         | 251.46  | 0.30               | 7.62  | 10.50        | 266.70  |
|             | 12           | 300  | 11.79        | 299.36  | 0.36               | 9.07  | 12.50        | 317.50  |
|             | 15           | 375  | 14.43        | 366.42  | 0.44               | 11.10 | 15.30        | 388.62  |
|             | 18           | 450  | 17.63        | 447.87  | 0.53               | 13.57 | 18.70        | 475.01  |
|             | 21           | 525  | 20.79        | 527.99  | 0.63               | 16.00 | 22.05        | 559.99  |
|             | 24           | 600  | 23.39        | 594.00  | 0.71               | 18.00 | 24.80        | 630.00  |
|             | 27           | 675  | 26.36        | 669.42  | 0.80               | 20.29 | 27.95        | 710.00  |
|             | 30           | 750  | 30.17        | 766.36  | 0.91               | 23.22 | 32.00        | 812.80  |
|             | 36           | 900  | 36.11        | 917.22  | 1.09               | 27.79 | 38.30        | 972.80  |
|             | 42           | 1050 | 41.95        | 1065.72 | 1.27               | 32.29 | 44.50        | 1130.30 |
|             | 48           | 1200 | 47.89        | 1216.56 | 1.45               | 36.87 | 50.79        | 1290.30 |
|             | 54           | 1350 | 54.27        | 1378.49 | 1.64               | 41.77 | 57.55        | 1462.00 |
|             | 60           | 1500 | 58.08        | 1475.48 | 1.76               | 44.71 | 61.61        | 1564.90 |
| <b>DR28</b> |              |      |              |         |                    |       |              |         |
|             | 4            | 100  | 3.91         | 99.42   | 0.15               | 3.82  | 4.21         | 107.06  |
|             | 5            | 135  | 5.24         | 133.02  | 0.20               | 5.12  | 5.64         | 143.26  |
|             | 6            | 150  | 5.83         | 148.01  | 0.22               | 5.69  | 6.28         | 159.39  |



## PRODUCTION SELECTION CHART

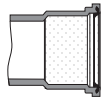
|  | Dimension |    | Product Code |
|--|-----------|----|--------------|
|  | inches    | mm |              |

### Manhole Gasket Adapter



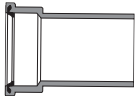
|    |     |        |
|----|-----|--------|
| 4  | 100 | 043050 |
| 5  | 135 | 043056 |
| 6  | 150 | 043051 |
| 8  | 200 | 043052 |
| 10 | 250 | 043053 |
| 12 | 300 | 043054 |
| 15 | 375 | 043055 |
| 18 | 450 | 043295 |
| 21 | 525 | *      |
| 24 | 600 | 043058 |

### Sanded Manhole Bell (w/o stop)



|    |     |        |
|----|-----|--------|
| 4  | 100 | 043060 |
| 5  | 135 | 043334 |
| 6  | 150 | 043061 |
| 8  | 200 | 043063 |
| 10 | 250 | 043064 |
| 12 | 300 | 043065 |
| 15 | 375 | 043062 |
| 18 | 450 | 043066 |
| 21 | 525 | 043067 |
| 24 | 600 | 043068 |
| 27 | 675 | 043591 |

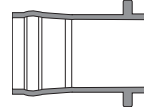
### Manhole Adapter G x SP (24"/600mm long)



|    |     |        |
|----|-----|--------|
| 4  | 100 | 043297 |
| 5  | 135 | 043299 |
| 6  | 150 | 043301 |
| 8  | 200 | 043302 |
| 10 | 250 | 043328 |
| 12 | 300 | 043329 |
| 15 | 375 | 043330 |
| 18 | 450 | 043331 |
| 21 | 525 | 043548 |
| 24 | 600 | 043332 |
| 27 | 675 | *      |

|  | Dimension |    | Product Code |
|--|-----------|----|--------------|
|  | inches    | mm |              |

### Wing Adapter (mortar-on)



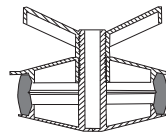
|    |     |        |
|----|-----|--------|
| 4  | 100 | 043190 |
| 5  | 135 | 043192 |
| 6  | 150 | 043191 |
| 8  | 200 | 043193 |
| 10 | 250 | 043194 |
| 12 | 300 | 043195 |
| 15 | 375 | 043196 |
| 18 | 450 | *      |
| 21 | 525 | *      |
| 24 | 600 | *      |
| 27 | 675 | *      |

### Universal Storm Sewer Saddle (c/w Bell & Seating Gasket)



|   |     |        |
|---|-----|--------|
| 4 | 100 | 082244 |
| 5 | 135 | 082245 |
| 6 | 150 | 082246 |
| 8 | 200 | 082248 |

### Hand Tight Expansion End Plug



|   |     |        |
|---|-----|--------|
| 4 | 100 | 043200 |
| 5 | 135 | 043201 |
| 6 | 150 | 043202 |
| 8 | 200 | 043212 |

### Stainless Steel Strap



|    |     |        |
|----|-----|--------|
| 6  | 150 | 043346 |
| 8  | 200 | 043348 |
| 10 | 250 | 043350 |
| 12 | 300 | 043352 |