

PRODUCT SELECTION CHART

	Volume		Product Code
	imperial	ml	
One-Step Cement	3/4" - 3" (20mm - 75mm)		
	1 pint	473	074328
	1 quart	946	074329

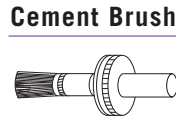
Note: BlazeMaster cement is **LOW VOC**



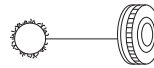
Cement Consumption Chart

Pipe and Fittings		Number of Joints per 946 ml (quart)
inches	mm	
3/4	20	200
1	25	125
1-1/4	32	100
1-1/2	40	90
2	50	60
2-1/2	65	50
3	75	40

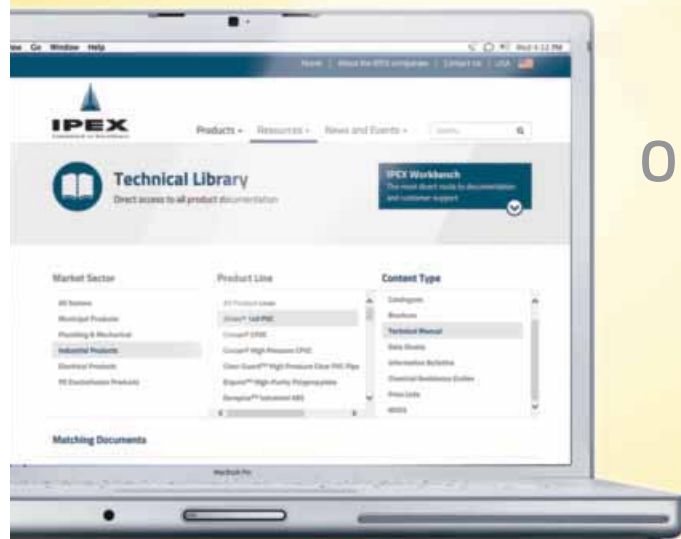
Size	Product Code
1" - 2" for 3/4" - 3" pipe	074428



Size	Product Code
3/4" - 1-1/4" for 3/4" - 1-1/4" pipe	074420
1-1/2" - 3" for 1-1/2" - 3" pipe	074421



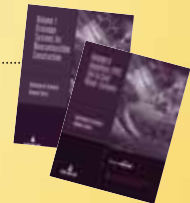
Visit our website: www.ipexna.com



PRODUCT INFO
TECHNICAL DOCUMENTS

ON-SITE TRAINING
& MUCH MORE ...

DOWNLOAD
OUR MECHANICAL
SYSTEMS TECHNICAL
MANUALS




APPLICATORS & ACCESSORIES

	Size		Product Code
	imperial	metric	

BRISTLE BRUSH / CAP

PB-1: Plastic Handle Brush; fits standard pint and quart cans.

CM BCP Can-Mate: Adjustable Plastic Handle Natural Bristle Brush; fits standard pint and quart cans.

	1"	25 mm	074454
---	----	-------	--------

CAN-MATE DAUBER

Adjustable plastic applicator with telescoping stem to fit all cans (except 1/4 pint). Available in 3/4" and 1-1/2" dauber sizes.

	3/4"	20 mm	074436
	1-1/2 - 3"	40-75 mm	074437

CAP DAUBER

DP daubers fit 1/2 pint & pint cans; DQ daubers fit quart cans. Available in 1/2", 3/4", and 1-1/2" dauber sizes.

	1/2"	12 mm	074455
	3/4"	20 mm	074420
	1-1/2"	40 mm	074421
	1-1/2"	40 mm	074422

SWAB

4020 swab for pipe diameters of 150 mm (6") or larger; fits MT-648 can. 5020 Swab available for quart can.

	4"	100 mm	074456
			074317

	Size		Product Code
	imperial	metric	

AQUARISE SUPERSWAB REPLACEMENT

Swab holder and handle are reusable and can be used to cap the cement can. **The swab is disposable and replaceable.**

			359826
--	--	--	--------

ROLL-A-WELD ROLLER

3020 roller for pipe diameters from 75 mm through 150 mm (3" through 6"); fits MT-653 empty quart can.





7020 roller for pipe diameters of 150 mm (6") or larger; fits MT-648 can.

	3"	75 mm	074426
	7"	180 mm	074427

Description	Volume		Product Code
	U.S.	metric	

CAN WITH NECK

Can with neck is available in gallon (with 2-7/8" neck), quarts (with 2-7/8" neck or paint style neck) and pint (1-3/4" neck).

	MT-654: 1-3/4" neck	pint	473 ml	074423
	MT-653: paint style neck	quart	946 ml	074419
	MT-651: 1-3/4" neck	quart	946 ml	074424
	MT-648: 2-7/8" neck	gallon	3785 ml	074425

	Size		Product Code
	imperial	metric	

EMPTY APPLICAN WITH BRUSH

	pint	500 ml	074728
---	------	--------	--------