

BLUE BRUTE PIPE

4" - 12" (100mm - 300mm)

BLUE BRUTE

Designed for municipal water applications, Blue Brute AWWA C900 pressure pipe delivers superior strength with corrosion resistant performance and the ability to flex without damage. Made with a high-strength, high-impact PVC compound, Blue Brute pipes perform even under high traffic loads and deep burial conditions.

Manufactured with cast-iron outside diameters, Blue Brute is compatible with existing infrastructure of older iron pipes with no special transition fittings required. Blue Brute pressure pipe is hydrostatically proof tested to two times its pressure class/rating ensuring the integrity of every length of pipe that goes into the ground.

ADVANTAGES

- 1 Corrosion-Proof Performance**
IPEX Blue Brute systems are immune to corrosion from aggressive soils and galvanic action.
- 2 Superior Hydraulics**
The glass-like finish of PVC reduces friction losses and eliminates the tuberculation common in iron pipes. As a result, pumping costs are reduced and water quality is maintained.
- 3 Cast-Iron Outside Diameter (CIOD)**
Blue Brute systems are manufactured with a cast-iron outside diameter (CIOD). This is compatible with waterworks valves, appurtenances and restrainers.
- 4 Bottle-tight Joints, Removable Gaskets**
IPEX's patented gasket system not only withstands many times the rated system pressure, but also withstands full vacuum pressures. The removable gasket system allows special oil-resistant (nitrile) gaskets to be easily installed when working in contaminated soils.
- 5 Third-party Certification**
All IPEX municipal systems are third-party certified as applicable. In addition, IPEX Blue Brute systems have Factory Mutual approval and Underwriter's Laboratories (ULI and ULC) listings

APPLICATIONS

- Municipal Water Systems
- Fire Lines
- Industrial Lines
- Forcemains
- Irrigation Lines

STANDARDS



AWWA
MEMBER



B137.3



ULC



3624-250



ULI



FM



NSF
NSF-61



DID YOU KNOW?

Each piece of Blue Brute is hydrostatically tested to two times its pressure class, ensuring excellent performance in the field.

2

BLUE BRUTE PIPE

2

3

1

4

CONSERVATIVE DESIGN

The pressure class/rating is extremely conservative. For example, for DR18 pipe the pressure capacity is 235 psi (1620 kPa), but the minimum burst pressure is 755 psi (5210 kPa).

Dimension Ratio	AWWA Pressure Class	CSA Pressure Rating
14	305	305
18	235	235
25	165	165

SHORT FORM SPECIFICATIONS

GENERAL

Blue Brute pipe shall be certified to CSA B137.3 "Rigid Polyvinyl Chloride PVC Pipe for Pressure Applications" and shall conform to AWWA C900 "Polyvinyl Chloride (PVC) Pressure Pipe, 4" – 12" for Water Transmission and Distribution." Blue Brute DR25 pipe shall have a pressure class/rating of 1120 kPa (165 psi). DR18 pipe shall have a pressure class/rating of 1620 kPa (235 psi). DR14 pipe shall have a pressure class/rating of 2100 kPa (305 psi).

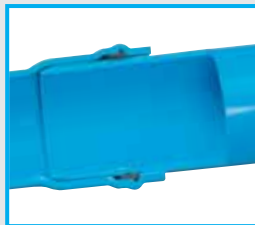
MATERIAL

Blue Brute pipe shall be made from PVC compound conforming to ASTM D1784 cell class 12454.

PRODUCT

Pipe shall be suitable for use at maximum hydrostatic working pressure equal to the pressure class/rating at 73°F (23°C). Laying lengths shall be 20 feet (6.1 meters). Pipe shall have cast-iron outside diameters. Each length of pipe must be proof-tested at two times the pressure class.

JOINING



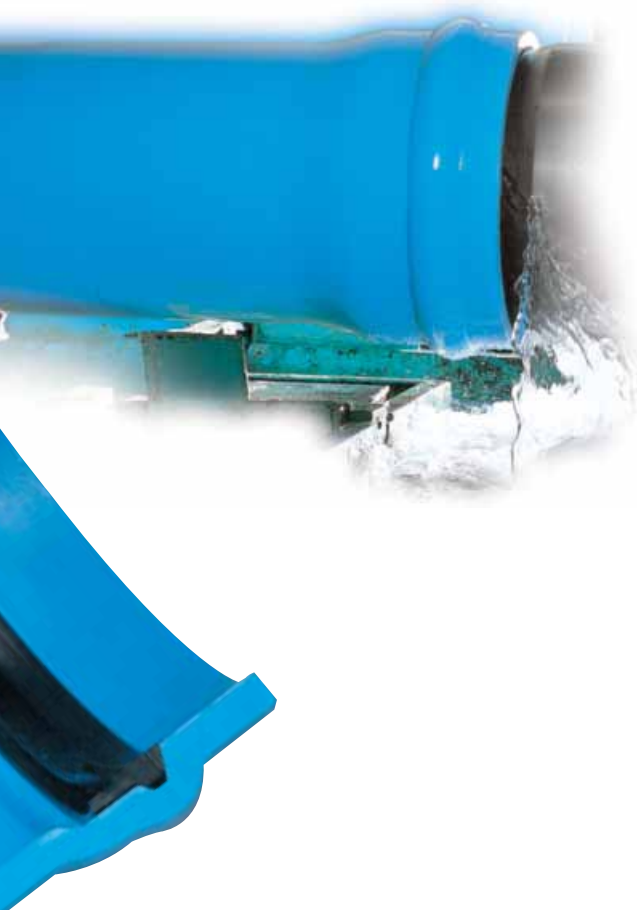
The gasket shall be carefully fitted to the bell groove if not already factory installed. Both bell and spigot shall be clean and free of debris before approved lubricant is applied. The pipe and/or fittings shall be joined by push-fitting bell-and-spigot joint to the depth line marked on the spigot. When pipe has been cut in the

field, the end shall be made square and beveled to a 15° chamfer. All insertion lines should be re-drawn, according to the IPEX Pressure Pipe Installation Guide.

Blue Brute fittings shall conform to AWWA C907 "Polyvinyl Chloride (PVC) Pressure Fittings for Water (4" through 12")" and be certified to CSA B137.2 "PVC Injection Molded Gasketed Fittings for Pressure Applications." They shall also be UL Listed and FM approved.

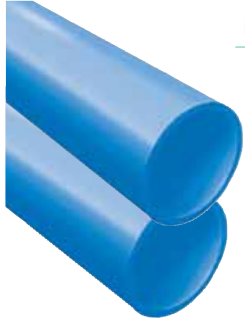
FABRICATED FITTINGS

Fabricated fittings shall be made from segments of AWWA C900 PVC pipe. Segments are bonded together and may be over-wrapped with fiberglass-reinforced polyester. The pressure class must match the pipe. The fittings must meet the requirements of CSA B137.3.



PRODUCT SELECTION CHART

Length: 20 feet | Color: Blue



PVC Pressure Pipe

Class/Rating 165
CIOD DR 25

Size	Product Code		Avg. ID		Min. Wall Thickness		Avg. OD	
	in	mm	in	mm	in	mm	in	mm
4	100	070104	4.42	112	0.192	5	4.80	122
6	150	070106	6.35	161	0.276	7	6.90	175
8	200	070108	8.33	212	0.362	9	9.05	230
10	250	070110	10.21	260	0.444	11	11.10	282
12	300	070112	12.15	309	0.527	13	13.20	335

Class/Rating 235
CIOD DR 18

4	100	070514	4.27	108	0.267	7	4.80	122
6	150	070516	6.13	155	0.383	10	6.90	175
8	200	070518	8.05	204	0.502	13	9.05	230
10	250	070520	9.87	250	0.616	16	11.10	282
12	300	070522	11.73	297	0.733	19	13.20	335

Class/Rating 305
CIOD DR 14

4	100	070414	4.11	104	0.343	9	4.80	122
6	150	070416	5.91	149	0.493	13	6.90	175
8	200	070418	7.76	198	0.646	16	9.05	230
10	250	070420	9.51	242	0.793	20	11.10	282
12	300	070422	11.31	287	0.943	24	13.2	335

Capped PVC Water Main Pipe

Class/Rating 235
DR 18

4	100	070551	4.27	108	0.267	7	4.80	122
6	150	070616	6.13	155	0.383	10	6.90	175
8	200	070618	8.05	204	0.502	13	9.05	230
10	250	070554	9.87	250	0.616	16	11.10	282
12	300	070555	11.73	297	0.733	19	13.20	335