

REPAIR PATCHES AND CLAMPS



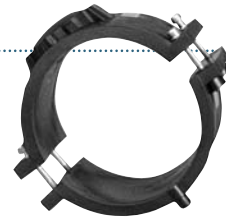
For Pipe Repairs up to 22"

Field of Application Repair of small damage leakage
Reinforcement of "squeeze off" areas and areas with surface damage that are compatible with PE 2406/2708 pipes as well as PE 3408/4710 pipes.

Range of Application Gas up to 125 psi and water up to 200 psi
For higher pressure ranges, contact IPEX at 800-463-9572

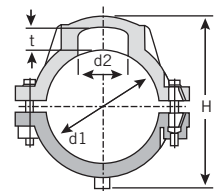
If a pipe is damaged, FRIATEC Repair Patches and Clamps are the quick reliable way to make the repair.

FRIATEC pipe repair systems are both simple to use and effective for pipe repair up to 22". Our repair systems make use of existing FRIATEC technology to seal a pipe puncture.



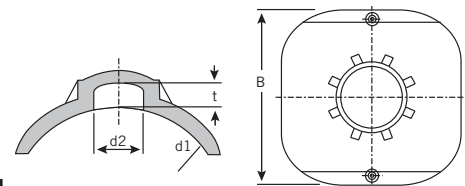
Benefits include:

- NSF-61



Repair Clamps - Under saddle

Nominal Pipe	Main Size	Product Code	d1	d2	H	t	Cold Zone Width (Center)
3"	IPS	228175	3.500	1.969	5.827	0.827	2.953"/75mm
4"	IPS	228176	4.500	1.969	6.614	0.827	3.071"/78mm
4"	DIP	228295	4.500	1.969	6.614	0.827	3.071"/78mm
6"	IPS	228177	6.625	1.969	8.583	0.827	3.346"/85mm
6"	DIP	228307	6.625	1.969	8.583	0.827	3.346"/85mm



Repair Patches - Top Loading

Nominal Pipe (in)	Main Size	Product Code	d1	d2	t	B	Cold Zone Width (Center)
8"	IPS *	228178	8.625	1.969	0.827	10.157	3.268"/85mm
8"	DIP *	228310	9.050	1.969	0.827	11.142	3.268"/85mm
10" - 22"	IPS *	228179	10.750 - 28.000	1.969	0.787	7.874	3.307"/83mm
10" - 20"	DIP *						

* FRIATEC Pneumatic Top-loading tool required (restriction on 28")

FRIATEC Safety Fittings can be fused to all PE pipes SDR Range 11 through 17.6.