

1250/1300 Volt PSC Square Body

Mersen 1250/1300V PSC fuse-links provide maximum flexibility in equipment design and ultimate protection for today's power conversion equipment. These square body fuse-links are available in four different body sizes, each size having four worldwide acceptable mounting styles. The different mounting styles and body sizes along with a broad range of ampere ratings allow greatest flexibility in equipment design.

Mersen PSC fuses have been engineered to provide state-of-the-art protection for SCR's, diodes, thyristors, GTO's and IGBT devices. They have pure silver die-cut elements embedded in solidified sand which helps control arcing characteristics for low I^2t and high interrupting rating. All contact surfaces are silver plated and all hardware is non-magnetic.

All fuse links are equipped with a low voltage trip-indicator. This trip-indicator can operate a field mountable microswitch which is easily mounted directly onto the fuse even while in service.

Features/Benefits:

- Choice of mounting styles gives wide choice for equipment design
 - Broad range of ampere ratings in a given body size for design flexibility
 - IEC 269-4 compliance for fuses for worldwide semiconductor applications
- *For Microswitch information see page J9

Highlights:

- Extremely fast acting
- Current limiting
- Very low I^2t
- Superior cycling ability

Applications:

- Protection of rectifiers, inverters, DC drives, UPS Systems, reduced voltage motor starters, and other equipment in globally accepted applications



Ratings:

- Volts** : 650-1300 VAC
Amps : AC - 50-1800A
I.R. : 100kA I.R. AC
DC : Consult Factory

Approvals:

- UL recognized component File E76491
- Sizes 70,71,72,73 tested to IEC 269.4



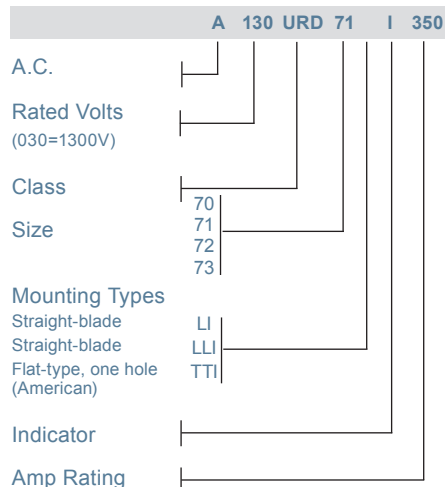
Part Number Designation:

12,5 URD: European/IEC
 Mounting Style/Approval
 Tested @ 1.1 V_N

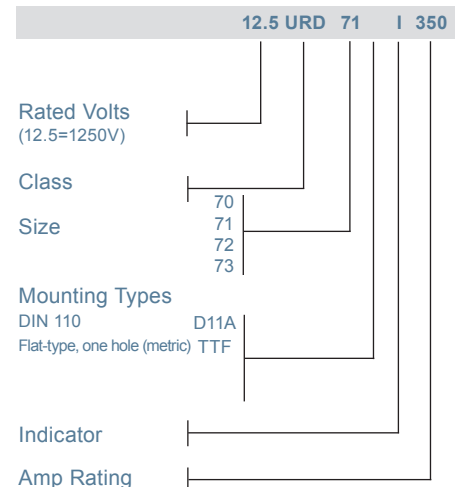
A130 URD: North American
 Mounting Style/Approval
 Tested @ V_N

* V_N = rated voltage

N. American Reference Numbering System



European Reference Numbering System



1250/1300 Volt PSC Square Body

European Blade DIN 110, Type D11A

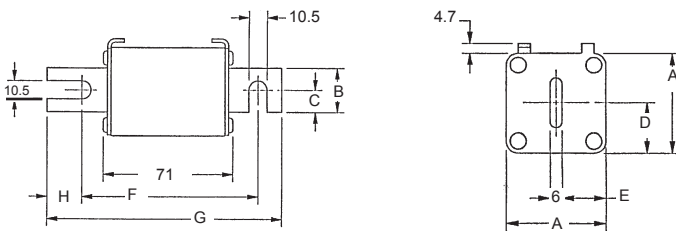
Body Size	Type	Dimensions - mm (in)						
		A	B	C	D	E	F	G
70	D11	40 (1.57)	25 (.98)	12.5 (.49)	21 (.83)	17 (.67)	100.4 (3.95)	133.4 (5.25)
71		51 (2.01)	25 (.98)	12.5 (.49)	25.5 (1.00)	22.5 (.89)	100.4 (3.95)	133.4 (5.25)
72		60 (2.36)	32 (1.26)	16 (.63)	30 (1.18)	27 (1.06)	100.4 (3.95)	133.4 (5.25)
73		74.5 (2.93)	40 (1.57)	20 (.79)	37.2 (1.46)	34.25 (1.35)	100.4 (3.95)	133.4 (5.25)

North American Straight Blade, Types LI & LLI

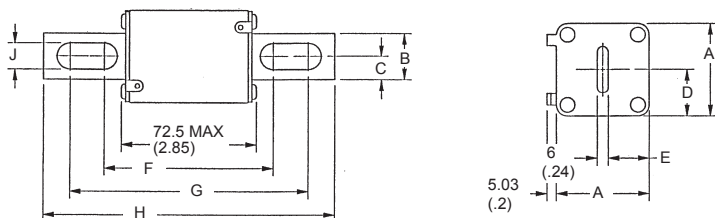
Body Size	Type	Dimensions - mm (in)								
		A	B	C	D	E	F	G	H	J
70	LI	40	25	12.5	21	18	91.4	130.4	152.4	10.5
		(1.57)	(0.98)	(0.49)	(0.83)	(0.71)	(3.60)	(5.13)	(6.00)	(0.41)
71	LLI	51	25	12.5	25.5	22.5	91.4	130.4	152.4	14.6
		(2.01)	(0.98)	(0.49)	(1.00)	(0.89)	(3.60)	(5.13)	(6.00)	(0.57)
72	LI	60	32	16	30	27	97.6	132.4	157.4	14.6
		(2.36)	(1.26)	(0.63)	(1.18)	(1.06)	(3.84)	(5.2)	(6.20)	(0.57)
73	LI	74.5	40	20	37.2	34.2	98.8	132.4	157.4	15.9
		(2.93)	(1.57)	(0.79)	(1.46)	(1.35)	(3.89)	(5.21)	(6.20)	(0.63)

Outline Dimensions

Type D11A



Types LI and LLI

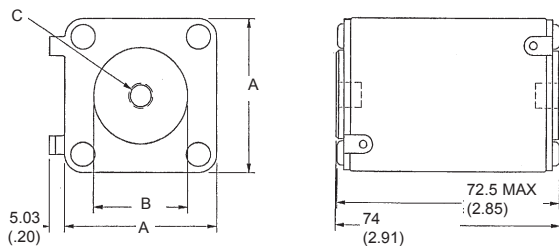


1250/1300 Volt PSC Square Body

1250/1300 Volt North American and European Flat Single Hole, Type TTI/TTF

Body Size	Type	Dimensions - mm/(In)		Tapped Hole (N. A.)	Tapped Hole (EURO.)
		A	B	C (TTI)	D (TTF)
70	TTI/TTF	40 (1.57)	25 (1.00)	5/16-18 X .23DP	M8 X 1.25 X 6 DP
71		50.8 (2.00)	30.2 (1.19)	5/16-18 X .36DP	M8 X 1.25 X 9 DP
72		60.3 (2.37)	38.1 (1.50)	3/8-16 X .36DP	M10 X 1.50 X 9 DP
73		74.6 (2.94)	46 (1.81)	1/2-13 X .35DP	M12 X 1.75 X 9 DP

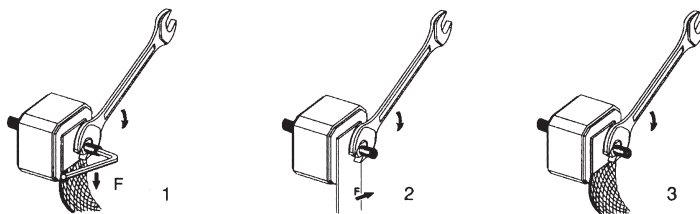
Types TTI and TTF



Standard Threaded Studs

Size	Ref. and Dimension Per Pair of Studs	Weight (g)	Max Stud Mounting Torque (Nm)	Max Nut Tightening Torque (Nm)		
				Fig. 1	Fig. 2	Fig. 3
70 & 71	S 98 801 (HC M8 X 30 & M 8 X 35)	23	13	13.5	13.5	13.5
72	T 98 802 (HC M 10 X 30 & M 10 X 50)	40	15	26	26	26
73	V 98 803 (HC M 12 X 35 & M 12 X 50)	60		46	46	15
2X72	W 98 804 (HC M 10 X 50)	50		26	26	26
2X73	X 98 805 (HC M 12 X 50)	70		46	46	15

Packaging: 6 pairs



1250/1300 Volt PSC Square Body

1300 Volt North American Style Ratings and Application Data, LI, LLI Mounting

Body Size	Amp Rating	Rated Voltage	Melting I ² t (A ² s x 10 ³)	Total I ² t @ 660VAC (A ² s x 10 ³)	** Watts Loss @ Rated Current (W)	Catalog No	New Description	Old Description
70	63	1300	0.21	1.8	26	W300652	A130UD70LI063	A130URD70LI0063
	80	1300	0.47	4	27	X300653	A130UD70LI080	A130URD70LI0080
	100	1300	0.83	7.2	30	Y300654	A130UD70LI100	A130URD70LI0100
	125	1300	1.3	11	38	Z300655	A130UD70LI125	A130URD70LI0125
	160	1300	2.5	22	45	A300656	A130UD70LI160	A130URD70LI0160
	200	1300	4.7	40	54/56	B300657	A130UD70LI200	A130URD70LI0200
	250	1300	9.6	82	58/61	C300658	A130UD70LI250	A130URD70LI0250
	315	1300	20	172	66/72	D300659	A130UD70LI315	A130URD70LI0315
	350	1200	28	205	68/75	E300660	A120UD70LI350	A120URD70LI0350
71	160	1300	2.6	22	46	E300752	A130UD71LLI160	A130URD71LLI0160
	200	1300	4.7	40	54	F300661	A130UD71LLI200	A130URD71LLI0200
	250	1300	8.9	76	61	G300662	A130UD71LLI250	A130URD71LLI0250
	280	1300	12	102	68/70	R300717	A130UD71LLI280	A130URD71LLI0280
	315	1300	16	138	73/76	H300663	A130UD71LLI315	A130URD71LLI0315
	350	1300	22	190	76/80	J300664	A130UD71LLI350	A130URD71LLI0350
	400	1300	38	330	76/80	K300665	A130UD71LLI400	A130URD71LLI0400
	450	1300	47	405	87/95	L300666	A130UD71LLI450	A130URD71LLI0450
	500	1200	68	500	90/100	M300667	A120UD71LLI500	A120URD71LLI0500
	550	1200	84	620	98/112	N300668	A120UD71LLI550	A120URD71LLI0550
630	1100	125	930	105	P300669	A110UD71LLI630	A110URD71LLI0630	
72	280	1300	10	90	72	Q300670	A130UD72LI280	A130URD72LI0280
	315	1300	15	130	76	R300671	A130UD72LI315	A130URD72LI0315
	350	1300	21	180	77	S300672	A130UD72LI350	A130URD72LI0350
	400	1300	32	285	80	T300673	A130UD72LI400	A130URD72LI0400
	450	1300	44	380	87/89	V300674	A130UD72LI450	A130URD72LI0450
	500	1300	57	500	94/98	W300675	A130UD72LI500	A130URD72LI0500
	550	1300	68	590	110/120	X300676	A130UD72LI550	A130URD72LI0550
	630	1200	105	920	113	Y300677	A120UD72LI630	A120URD72LI0630
	700	1100	145	1040	122	Z300678	A110UD72LI700	A110URD72LI0700
800	1100	215	1590	125	A300679	A110UD72LI800	A110URD72LI0800	
73	315	1300	12	102	84	B300680	A130UD73LI315	A130URD73LI0315
	350	1300	17	150	86	C300681	A130UD73LI350	A130URD73LI0350
	400	1300	25	220	93	D300682	A130UD73LI400	A130URD73LI0400
	450	1300	35	310	99/100	E300683	A130UD73LI450	A130URD73LI0450
	500	1300	44	390	110/112	F300684	A130UD73LI500	A130URD73LI0500
	550	1300	57	500	116/120	G300685	A130UD73LI550	A130URD73LI0550
	630	1300	84	730	125/132	H300686	A130UD73LI630	A130URD73LI0630
	700	1300	110	960	135/146	J300687	A130UD73LI700	A130URD73LI0700
	800	1200	190	1630	136	V301824	A130UD73LI800	A130URD73LI0800
	900	1100	250	2160	150	L300689	A110UD73LI900	A110URD73LI0900
	1000	1000	370	2430	152/174	M300690	A100UD73LI1000	A100URD73LI1000
	1100	1000	445	2580	168/208	N300691	A100UD73LI1100	A100URD73LI1100
	1250	1000	585	3480	186/200	J301193	A100UD73LI1250	A100URD73LI1250
	1400	900	755	3880	210/228	K301194	A090UD73LI1400	A090URD73LI1400
	1600	700	1430	5630	203	P300876	A070UD73LI1600	A070URD73LI1600
1800	650	2040	7600	206	A301599	A065UD73LI1800	A065URD73LI1800	

** Watts loss data is published for both blade and tapped style mounting configurations. When two watts loss values are shown this represents tapped/blade values respectively.