

# 750V DC Square Body Fuses

Size: 122

## Features/Benefits:

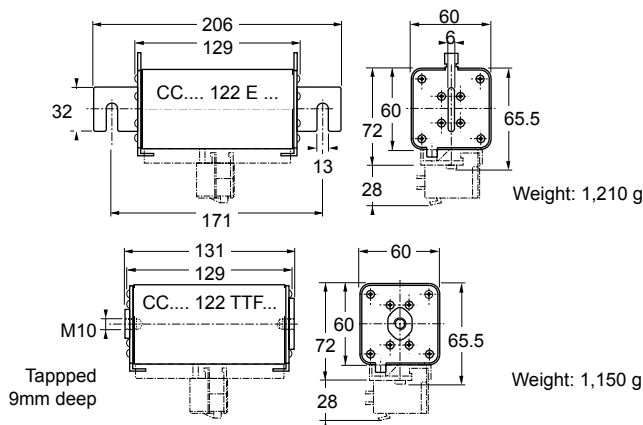
- Blown-fuse indicator
- Square ceramic body
- Full range D.C. operation
- Bladed and tapped versions standard

## Catalog Numbers, Ratings

Size	Current Rating $I_N$ (A)	Interrupting $I_N$ (A)	Maximum $I^2t$ @900V=L/R 40ms		Watts Loss		Catalog Number	Ref. No.
			$I_p=10I_N$	$I_p=50I_N$	0.8 $I_N$	$I_N$		
122	250	@ 750V= 100kA L/R = 100ms	1.25x10 <sup>6</sup>	250,000	25.5	46.7	CC 7,5 gRC 122 EF 0250	A087331
	315		2x10 <sup>6</sup>	400,000	31.5	58	CC 7,5 gRC 122 EF 0315	B087332
	350		2.5x10 <sup>6</sup>	500,000	35	64.5	CC 7,5 gRC 122 EF 0350	W221141
	400		3.1x10 <sup>6</sup>	600,000	40.5	74.5	CC 7,5 gRC 122 EF 0400	L089388
	450		4x10 <sup>6</sup>	800,000	49	90	CC 7,5 gRD 122 EF 0450	P220951
	500		6.2x10 <sup>6</sup>	1.25x10 <sup>6</sup>	52	95	CC 7,5 gRD 122 EF 0500	Q220952
	250		1.25 x10 <sup>6</sup>	250,000	25.5	46.7	CC 7,5 gRC 122 TTF 0250	B090437
	315		2x10 <sup>6</sup>	400,000	31.5	58	CC 7,5 gRC 122 TTF 0315	M085249
	350		2.5x10 <sup>6</sup>	500,000	35	64.5	CC 7,5 gRC 122 TTF 0350	G220898
	400		3.1x10 <sup>6</sup>	600,000	40.5	74.5	CC 7,5 gRC 122 TTF 0400	C090438
450	4x10 <sup>6</sup>	800,000	49	90	CC 7,5 gRD 122 TTF 0450	R220953		
500	6.2x10 <sup>6</sup>	1.25x10 <sup>6</sup>	52	95	CC 7,5 gRD 122 TTF 050	S220954		

\*MAX.  $I^2t$  @ 800V=, L/R=40ms  
Microswitch: MC 3E 1-5N Ref. Number: D310020  
Contact factory for holder

## Dimensions



## Ratings:

**Volts** : 750VDC  
          : 900VDC

**Amps** : 250 to 500A

**IR** : 100kA I.R. DC

**L/R** : 100mSec (750V)  
**L/R** : 40mSec (900V)