

CP 600V Cable Protectors

Cable Protectors

Mersen CP Cable Protectors are special purpose limiters which are crimped or bolted to cables or terminals to clear and isolate faults quickly, increasing the reliability of service entrance and distribution runs. CP Cable Protectors have a 200,000A interrupting rating, yet will carry low cable overloads which are handled by standard protective devices. Cable protectors are rated in terms of cable size and material (Al or Cu). Heavier duty CPH cable protectors are available on special order. Heat shrinkable (HS) tubing can be specified for field installation. TI blown fuse trigger indicators may be available upon request. Refer to the application information section for more information.

Features/Benefits:

- Fiberglass bodies for dimensional stability in harsh environments
- Catalog number stamped into terminal for permanent identification
- Crimp terminals for aluminum cable include oxide inhibitor
- Molded rubber boots or heat shrinkable tubing available for insulation and protection
- Current limiting device
- Permitted by National Electric Code



Ratings:

Sizes #2 to 1000kcmil aluminum or copper

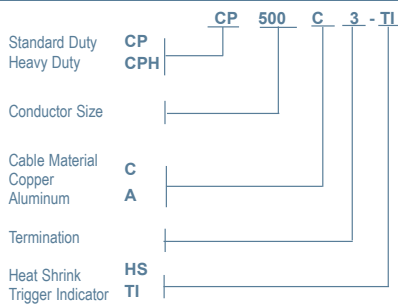
Volts : 600VAC
IR : 200kA I.R. AC

Approvals:

- UL listed to File E305297



Catalog Numbering System



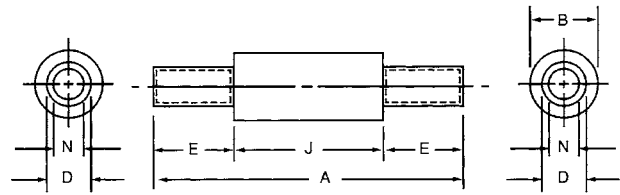
*Please consult factory for special terminations.

Type	Description	Cable Size	Catalog # for Cable Type			
			Copper	Aluminum		
1	Cable to Cable	2	CP2C1	-		
		1/0	CP1/0C1	-		
		2/0	CP2/0C1	-		
		4/0	CP4/0C1	CP4/0A1		
		250kcmil	CP250C1	CP250A1		
		350kcmil	CP350C1	CP350A1		
		400kcmil	CP400C1	-		
		500kcmil	CP500C1	CP500A1		
		600kcmil	CP600C1	CP600A1		
		750kcmil	CP750C1	CP750A1		
3	Cable to Offset Bus	2	CP2C3	-		
		1/0	CP1/0C3	-		
		2/0	CP2/0C3	-		
		4/0	CP4/0C3	CP4/0A3		
		250kcmil	CP250C3	CP250A3		
		350kcmil	CP350C3	CP350A3		
		400kcmil	CP400C3	-		
		500kcmil	CP500C3	CP500A3		
		600kcmil	CP600C3	CP600A3		
		750kcmil	CP750C3	CP750A3		
5	Straight Bus to Offset Bus	2/0	CP2/0C5	CP2/0C5		
		4/0	CP4/0C5	CP4/0C5		
		250kcmil	CP250C5	CP250C5		
		350kcmil	CP350C5	CP350C5		
		500kcmil	CP500C5	CP500C5		
		600kcmil	CP600C5	CP600C5		
		750kcmil	CP750C5	CP750C5		
		6	Mole to Cable	4/0	CP4/0C6	CP4/0A6
				250kcmil	CP250C6	CP250A6
				350kcmil	CP350C6	CP350A6
400kcmil	CP400C6			-		
500kcmil	CP500C6			CP500A6		
750kcmil	CP750C6			CP750A6		
8	Mole to Offset Bus	4/0	CP4/0C8	CP4/0C8		
		250kcmil	CP250C8	CP250C8		
		350kcmil	CP350C8	CP350C8		
		500kcmil	CP500C8	CP500C8		
		750kcmil	CP750C8	CP750C8		

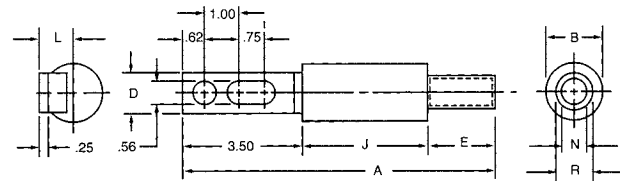
CP 600V Cable Protectors

Type C1 – Dimensions (Cable to Cable - Copper)

Catalog No.	Cable* Size	Dimensions - Inches (mm)					
		A	B	D	E	J	N
CP2C1	#2	7.12 (180)	1.44 (37)	.42 (11)	1.75 (44)	3.62 (92)	.31 (7.9)
CP1/OC1	1/0	7.12 (180)	1.44 (37)	.52 (13)	1.75 (44)	3.62 (92)	.39 (9.9)
CP2/OC1	2/0	7.12 (180)	1.44 (37)	.56 (14)	1.75 (44)	3.62 (92)	.44 (11)
CP4/OC1	4/0	7.12 (180)	1.44 (37)	.68 (17)	1.75 (44)	3.62 (92)	.55 (14)
CP250C1	250kcmil	7.38 (188)	1.44 (37)	.75 (19)	1.88 (48)	3.62 (92)	.62 (16)
CP350C1	350kcmil	7.62 (194)	1.62 (41)	.88 (22)	2.00 (51)	3.62 (92)	.71 (18)
CP400C1	400kcmil	7.62 (194)	1.62 (41)	.94 (24)	2.00 (51)	3.62 (92)	.75 (19)
CP500C1	500kcmil	9.38 (238)	1.88 (48)	1.05 (27)	2.88 (73)	3.62 (92)	.85 (22)
CP600C1	600kcmil	9.51 (242)	2.50 (64)	1.07 (27)	2.88 (73)	3.75 (95)	.94 (24)
CP750C1	750kcmil	9.51 (242)	2.50 (64)	1.32 (34)	2.88 (73)	3.75 (95)	1.06 (27)
CP1000C1	1000kcmil	10.00 (254)	3.00 (76)	1.50 (38)	3.13 (79)	3.75 (95)	1.16 (29)



Type C1



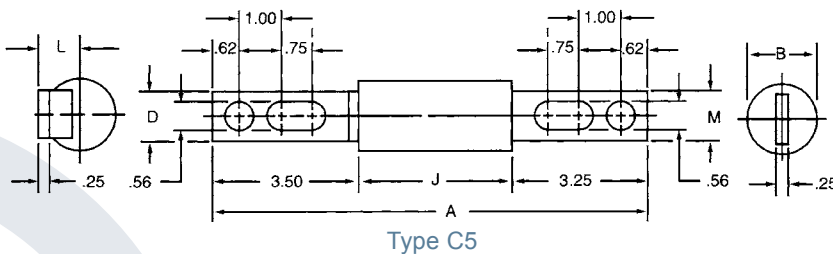
Type C3

Type C3 – Dimensions (Cable to Offset Bus - Copper)

Catalog No.	Cable* Size	Dimensions - Inches (mm)									
		A	B	D	E	I	J	L	N	R	
CP2C3	#2	8.87 (225)	1.44 (37)	1.12 (28)	1.75 (44)	3.50 (88.9)	3.62 (92)	.96 (24)	.31 (7.9)	.42 (11)	
CP1/OC3	1/0	8.87 (225)	1.44 (37)	1.12 (28)	1.75 (44)	3.50 (88.9)	3.62 (92)	.96 (24)	.39 (9.9)	.52 (13)	
CP2/OC3	2/0	8.87 (225)	1.44 (37)	1.12 (28)	1.75 (44)	3.50 (88.9)	3.62 (92)	.96 (24)	.44 (11)	.56 (14)	
CP4/OC3	4/0	8.87 (225)	1.44 (37)	1.12 (28)	1.75 (44)	3.50 (88.9)	3.62 (92)	.96 (24)	.55 (14)	.68 (17)	
CP250C3	250kcmil	9.00 (229)	1.44 (37)	1.12 (28)	1.88 (48)	3.50 (88.9)	3.62 (92)	.96 (24)	.62 (16)	.75 (19)	
CP350C3	350kcmil	9.12 (232)	1.62 (41)	1.12 (28)	2.00 (51)	3.50 (88.9)	3.62 (92)	.96 (24)	.71 (18)	.88 (22)	
CP400C3	400kcmil	9.12 (232)	1.62 (41)	1.12 (28)	2.00 (51)	3.50 (88.9)	3.62 (92)	.96 (24)	.75 (19)	.88 (22)	
CP500C3	500kcmil	10.00 (254)	1.88 (48)	1.62 (41)	2.88 (73)	3.50 (88.9)	3.62 (92)	1.19 (30)	.85 (22)	1.05 (27)	
CP600C3	600kcmil	10.13 (257)	2.50 (64)	2.00 (51)	2.88 (73)	3.50 (88.9)	3.75 (95)	1.31 (33)	.94 (24)	1.07 (27)	
CP750C3	750kcmil	10.13 (257)	2.50 (64)	2.00 (51)	2.88 (73)	3.50 (88.9)	3.75 (95)	1.31 (33)	1.06 (27)	1.32 (34)	
CP1000C3	1000kcmil	10.63 (270)	3.00 (76)	2.00 (51)	3.13 (79)	3.75 (95)	3.75 (95)	1.56 (40)	1.16 (29)	1.50 (38)	

Type C5 – Dimensions (Straight Bus to Offset Bus - Copper)

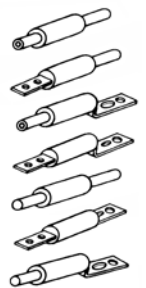
Catalog No.	Cable Size	Dimensions - Inches (mm)					
		A	B	D	J	L	M
CP4/OC5	4/0	10.37 (263)	1.44 (37)	1.12 (28)	3.62 (92)	.96 (24)	1.12 (28)
CP250C5	250kcmil	10.37 (263)	1.44 (37)	1.12 (28)	3.62 (92)	.96 (24)	1.12 (28)
CP350C5	350kcmil	10.37 (263)	1.62 (41)	1.12 (28)	3.62 (92)	.96 (24)	1.12 (28)
CP400C5	400kcmil	10.37 (263)	1.62 (41)	1.12 (28)	3.62 (92)	.96 (24)	1.12 (28)
CP500C5	500kcmil	10.37 (263)	1.88 (48)	1.62 (41)	3.62 (92)	1.19 (30)	1.50 (38)
CP600C5	600kcmil	10.50 (267)	2.50 (64)	2.00 (51)	3.75 (95)	1.31 (33)	2.00 (51)
CP750C5	750kcmil	10.50 (267)	2.50 (64)	2.00 (51)	3.75 (95)	1.31 (33)	2.00 (51)



Type C5

Cable Type

- TYPE 1 — Cable to cable
- TYPE 2 — Bus to cable
- TYPE 3 — Cable to offset bus
- TYPE 5 — Bus to offset bus
- TYPE 6 — Mole to cable
- TYPE 7 — Bus to bus
- TYPE 8 — Mole to offset bus



* kcmil = MCM