

# AG Class G

## Amp-Trap® AG fuses fit right in to a wide variety of industrial applications

The Mersen Amp-Trap AG fuse series is a complete line of Class G fuses. AG fuses safely fit a wide variety of applications. Class G fuses are made in four physical sizes and provide superior branch-circuit protection for lighting, heating, and appliance circuits.

### Features/Benefits:

- Four unique sizes from 1/2-60 amperes do not allow inter-changeability with other fuse classes
- Fiberglass bodies provide dimensional stability in harsh industrial settings

### Highlights:

- Current-limiting
- Time-delay (above 5A)

### Applications:

- Lighting
- Heating\*
- Appliances

*\*except in Canada where fuses must be "P" or "D" type.*

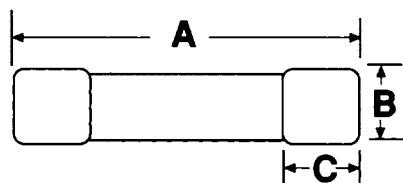
### Catalog Numbers (amps)

AG1/2	AG15
AG1	AG20
AG1-1/2	AG25
AG2	AG30
AG3	AG35
AG4	AG40
AG5	AG45
AG6	AG50
AG8	AG60
AG10	

### Dimensions

Ampere Rating	A		B		C	
	in	mm	in	mm	in	mm
1/2-15A	1.31	33.3	.406	10.3	.28	7.1
20A	1.41	35.8	.406	10.3	.28	7.1
25, 30A	1.62	41.2	.406	10.3	.28	7.1
35-60A	2.25	57.2	.406	10.3	.50	

Cross Reference: AG will replace the following fuses: Bussmann SC, Littelfuse SLC



### Ratings:

<b>Volts</b>	: 600VAC (1/2 to 20A)
	: 480VAC (25 to 60A)
<b>Amps</b>	: 1/2 to 60A
<b>IR</b>	: 100kA I.R. AC

### Approvals:

- UL listed to standard 248-5 File E2137
- CSA certified to standard C22.2 No. 248.5

