

Surge-Trap[®] Type 1 XT Series SPD

The Surge-Trap[®] Type 1 XT Series offers Advanced Technology. It utilizes large block 50kA Thermally Protected MOV's. With line or load side installation flexibility, this unit is a great fit from the service entrance all the way down to each distribution and/or branch panel.

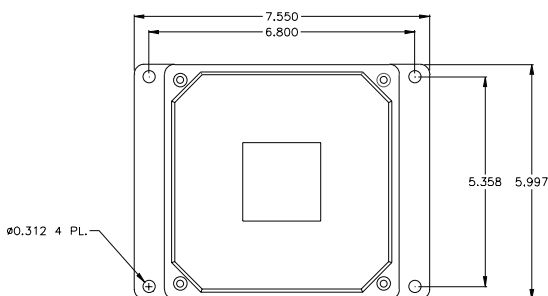
Features/Highlights:

- UL 1449 Third Edition Listed (Sept 2009)
- Type 1 SPD – All UL required OCP & safety coordination included inside
- Can be installed line-side or load-side of main disconnect
- 20kA Nominal discharge current
- 200kA SCCR (most models)
- UL 96A Lightning Protection Master Label compliant (@20kA In)
- NEMA 4X polycarbonate enclosure – UL 746C(f1) & UL 94-5VA
- TPMOV[®] Technology Inside
- All MOV suppression elements monitored
- Filtering - AC sinewave tracking filter with EMI/RFI filtering up to -50dB from 10khz to 100mhz
- Phase-loss monitoring (toggles LED and dry contacts)
- Ten-year Warranty

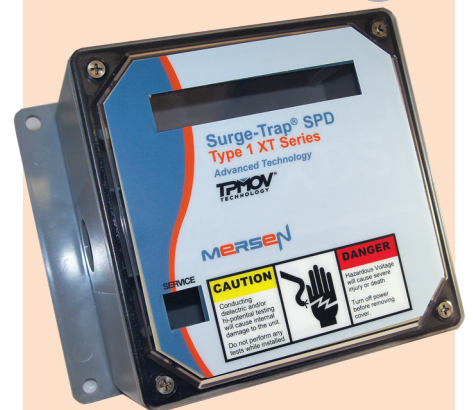
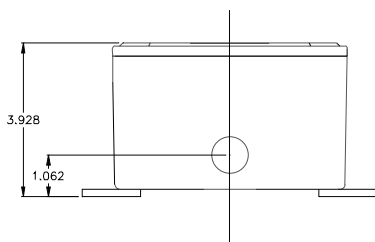
Applications:

- Service Entrance
- AC Distribution
- Power supplies
- Drive Protection
- Large Control Panels
- Telecommunications
- IT / Data centers

Dimensions and Weight



Weight: 5lbs (2.3kg)



Ratings:

- Surge** : 100kA per phase
: 200kA per phase
- Volts** : 120V to 600V
- SCCR** : 200kA SCCR (most models)
- Nominal discharge current**
: 20kA (most models)
- Operating & storage temp**
: -25°C to +60°C
- Enclosure**
: NEMA 4x

Approvals:

- UL 1449 Third Edition, cUL, UL 1283 R/C
- UL File: VZCA.E210793
- RoHS Compliant
- IEC 61643, CE
- Burn-In tested prior to shipment
- UL 96A lightning protection master label

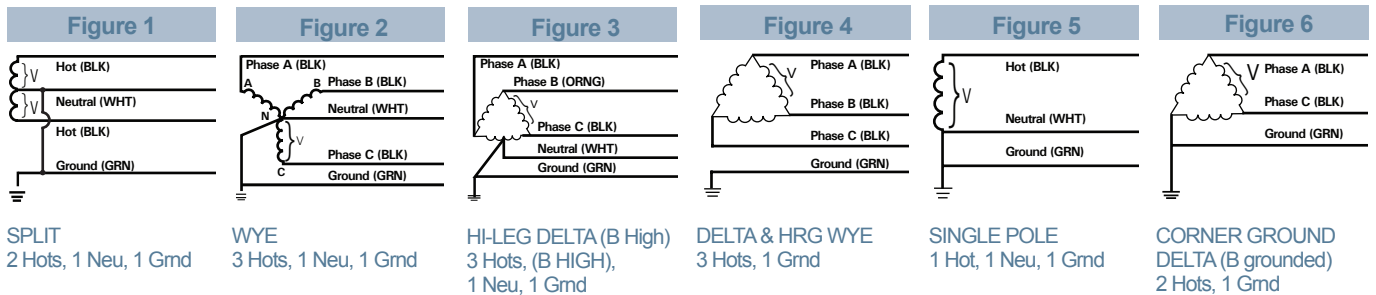


Surge-Trap[®] Type 1 XT Series SPD

Catalog Numbers - Ordering System

STXT	System Voltage	S	Surge Rating	Enclosure	Options
STXT	Common System Configurations				Blank
	01 = 240/120V Split Phase - 1Φ 3W+Grnd (Fig 1)		100		A = Audible Alarms & Dry Contacts
	02 = 208Y/120V Wye - 3Φ 4W+Grnd (Fig 2)		200		E = Remote Indicator (6ft cable)
	03 = 240/120V High Leg Delta (B High) (Fig 3)		200		L = Deletes L-N protection
	04 = 480Y/277V Wye - 3Φ 4W+Grnd (Fig 2)		200		G = Deletes L-G protection
	05 = 480V Delta - 3Φ 3W+Grnd (Fig 4) & HRG Wye		200		N = Deletes N-G protection
	08 = 600Y/347V Wye -3Φ 4W+Grnd (Fig 2)		200		R = Alternate lead length
	Other System Configurations Available				
	06 = 240V Delta - 3Φ 3W+Grnd (Fig 4)				
	07 = 380Y/220V Wye - 3Φ 4W+Grnd (Fig 2)				
	09 = 600V Delta - 3Φ 3W+Grnd (Fig 4) & HRG Wye				
	11 = 120V Single Phase (Fig 5)				
	12 = 240V Single Phase (Fig 5) - Not split phase				
	13 = 127V Single Phase (Fig 5)	S		4X	
	14 = 300V Single Phase (Fig 5)				
	15 = 254/127V Split Phase - 1Φ 3W+Grnd (Fig 1)				
	16 = 277V Single Phase (Fig 5)				
	17 = 480V Single Phase (1 Hot, 1 Neu, 1 Grnd) (Fig 5)				
	18 = 480/277 2-Pole, (480/240V Split Phase) (Fig 1)				
	21 = 220Y/127V Wye - 3Φ 4W Grnd (Fig 2)				
41 = 520Y/300V Wye- 3Φ 4W+Grnd (Fig 2)					
42 = 415Y/240V Wye-3Φ 4W+Grnd (Fig 2)					
43 = 400Y/230V Wye - 3Φ 4W+Grnd (Fig 2)					
44 = 440Y/250V Wye - 3Φ 4W+Grnd (Fig 2)					
51 = 480V B Corner Grnd Delta, 3Φ 3W+Grnd (Fig 6)					
61 = 240V B Corner Grnd Delta, 3Φ 3W+Grnd (Fig 6)					
91 = 600V B Corner Grnd Delta, 3Φ 3W+Grnd (Fig 6)					
Example	STXT04S2004XA				
STXP	04	S	200	4X	A

Wiring Diagrams



Performance Data

Common North American Systems			UL 1449 THIRD Edition (Sept 2009) Test Data							
			Voltage Protection Ratings (VPR - 3kA)							
			L-N	L-G	N-G	L-L	Type	In	SCCR	MCOV
01	=	240/120V Split Phase	700	700	600	1000	Type 1	20kA	100kA	150
02	=	208Y/120V 3Ø Wye	700	700	600	1000	Type 1	20kA	200kA	150
03	=	240Y/120V B High Leg Delta	700/1200	700/1200	600	1000/2000	Type 1	20kA	200kA	150 / 320
04	=	480Y/277V 3Ø Wye	1200	1200	1200	2000	Type 1	20kA	200kA	320
05	=	480V 3Ø Delta	-	1800	-	2000	Type 1	10kA	200kA	550
08	=	600Y/347V 3Ø Wye	1500	1500	1500	2500	Type 1	10kA	200kA	420

Available Accessories*

FMKITC = Flush mount kit.

RM = Remote monitor

*Consult factory for details.

For the most current product performance data visit us-ferrazshawmut.mersen.com and use catalog search.