

NEMA 12-13 MTRX CABINETS

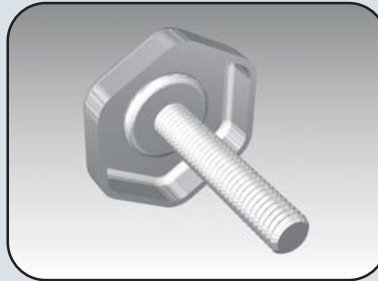
Visit
www.eurobex.com
for details.

Call us
toll free
1-800-363-2423

Frame levelers

The **6500 MXLEV** are zinc-plated leveling feet which allow adjustment for uneven floors.

The **6500 MXLEV2** are heavy duty leveling feet which allow adjustment for uneven floors.



CATALOG NUMBER	DESCRIPTION	PACKS OF
6500 MXLEV	Metal base	4
6500 MXLEV2	Heavy duty	4

Caster wheels

The **886 C200** caster wheels can be mounted on a cabinet base. They come with a threaded stem and screw on to the Mtrx cabinet base. Caster wheels are available with or without brake.

A set of four caster wheels can support up to 1000lbs.



CATALOG NUMBER	DESCRIPTION	PACKS OF
886 C200	No brake	4
886 CB200	C/W brake	4

Cabinet top spacer

The **6500 MXTSP** top spacers are installed between the cabinet frame and the cabinet top to provide a gap for ventilation or other purposes.

The kit consists of four cabinet spacers, to be installed in each corner.



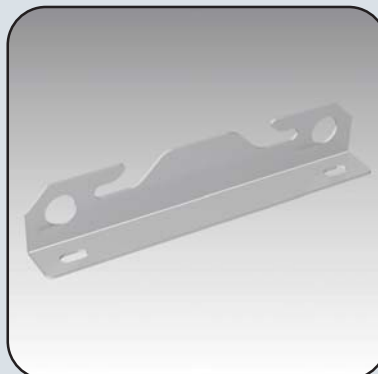
CATALOG NUMBER	SPACER HEIGHT	PACKS OF
6500 MXTSP10	10mm	4
6500 MXTSP20	20mm	4

Strapping brackets

The **6500 MXST** strapping brackets are used to protect the cabinet against damage which may be caused by strapping material. They are installed on top of the cabinet and extend from front to back.

The kit consists of two 10 GA brackets and mounting hardware.

Please note that strapping brackets should not be used for overhead lifting.



CATALOG NUMBER	ENCLOSURE DEPTH	PACKS OF
6500 MXST04	400mm	2
6500 MXST05	500mm	2
6500 MXST06	600mm	2
6500 MXST08	800mm	2
6500 MXST09	900mm	2