

4C

N2S and N2SC Series Control Stations

Factory Sealed, Corrosion-Resistant
600VAC Heavy Duty

Cl. I, Div. 2, Groups B, C, D
NEMA 3, 4X, 7BCD (Div. 2), 12
Watertight
Weatherproof
Dust-tight

Applications:

N2S and N2SC pushbutton stations, selector switches and pilot lights are suitable for use:

- In Class I, Groups B, C, D; Division 2 hazardous areas where flammable vapors or gases may be present due to accidental or abnormal operation
- In damp, wet, or corrosive locations
- Indoors or outdoors in Division 2 areas of petroleum refineries, chemical plants and other process industry facilities where similar hazards exist

N2S and N2SC pushbutton stations and selector switches are used:

- In conjunction with magnetic starters or contactors for remote control of motors
- N2S and N2SC pilot lights are used:
- To visually indicate at a remote location that the desired function is being performed

Optional maintained stop pushbutton(s) are used: As emergency or normal stop button(s) in motor control circuits for positive shutdown.

Features:

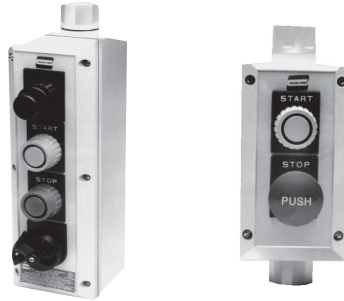
- Pushbutton stations, pilot lights, and selector switch devices are factory sealed. External seals are not required.
- Enclosures are made of Krydon® fiberglass-reinforced polyester material having excellent corrosion resistance and stability to heat and sunlight.
- Optional maintained stop feature operates by depressing the mushroom head pushbutton. Pushbutton must be manually pulled before start button can be actuated.
- Lockout is standard on selector switch devices.
- Factory installed dead end (N2S) or through feed (N2SC) hubs – 1/2", 3/4", and 1" sizes.
- Indicating plates are available with a choice of 40 standard markings.
- Grounding plate included with each hub.

Certifications and Compliances:

- NEC:
 - Class I, Division 2, Groups B, C & D
- NEMA: 3, 4X, 7BCD (Division 2) and 12
- UL Standard: 1203
- CSA Standard: C22.2 Nos. 14 & 30

Electrical Rating Ranges:

- Pushbutton stations and selector switches – heavy duty 600 VAC maximum
- Pilot lights – 120 to 600 VAC

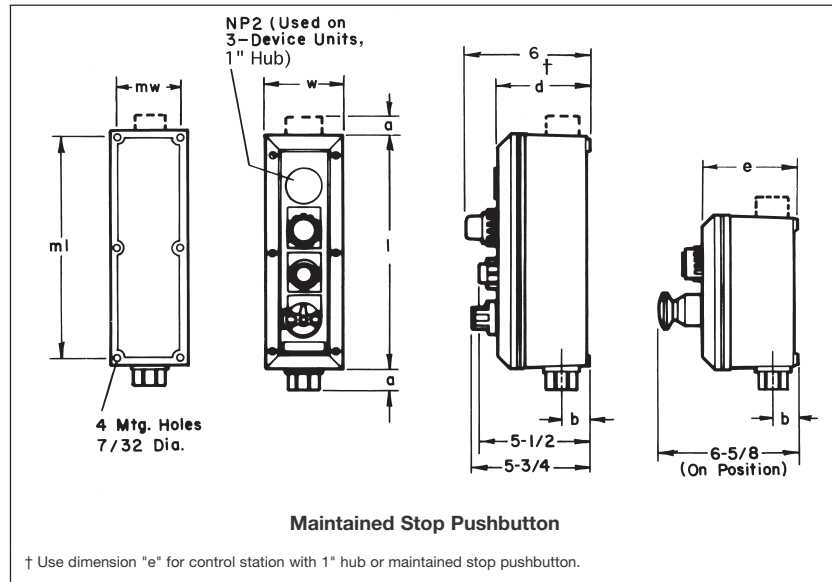


Options:

The following special options are available from factory by adding suffix to Cat. #:

Description	Suffix
Padlock attachments for all pushbuttons. For "START-STOP" stations, only "STOP" button provided with lockout (lockout standard with STOP).....	S708
Three position selector switches with modified operation:	
Momentary contact clockwise operation, spring return to center, maintained contact counterclockwise operation	S634
Momentary contact counterclockwise operation, spring return to center, maintained contact clockwise operation	S635
Control station with maintained stop pushbutton (requires NCD type enclosure):	
One maintained stop pushbutton	MSR1
Two maintained stop pushbuttons	MSR2
Maintained stop pushbuttons are installed at bottom position(s) of control station unless otherwise specified.	
LED pilot lights in place of standard incandescent pilot lamps	LED

Dimensions In Inches:



Dimensions are approximate, not for construction purposes.

N2S(C) Body Style	Outside Dims.		(NCS)* (NCD)*		Mounting Dims.		1/2" & 3/4" Hubs		1" Hubs	
	l	w	d	e	ml	mw	a	b	a	b
1 or 2 devices	7 1/4	3 3/16	4 3/8	5 3/8	6 3/8	2 15/16	1 1/8	1 1/16	1 1/4	1 5/16
3 or 4 devices	11 3/4	3 3/16	4 3/8	5 3/8	10 7/8	2 15/16	1 1/8	1 1/16	1 1/4	1 5/16

*NCS box is supplied with units using 1/2" and 3/4" hubs. NCD box is supplied with units using 1" hubs or MSR option.
‡ NCD 4 device box used with 1" hubs or MSR option.

Crouse-Hinds
by **F.T.M.**

4C

N2S and N2SC Series Control Stations

Factory Sealed, Corrosion-Resistant
600VAC Heavy Duty

Cl. I, Div. 2, Groups B, C, D
NEMA 3, 4X, 7BCD (Div. 2), 12
Watertight
Weatherproof
Dust-tight

Ordering Information - With Pushbuttons – Momentary Contact

No. Units	Contact Symbol	Marking Unless Otherwise Specified	Enclosure with Pushbuttons		
			Hub Size	Dead End Cat. #	Through Feed Cat. #
1		START (or Specify)	1/2	N2S1110 ②	N2SC1110 ②
			3/4	N2S2110 ②	N2SC2110 ②
			1	N2S3110 ②	N2SC3110 ②
2		START-STOP (or Specify)	1/2	N2S1210 ②	N2SC1210 ②
			3/4	N2S2210 ②	N2SC2210 ②
			1	N2S3210 ②	N2SC3210 ②
3		Specify	1/2	N2S1310 ②	N2SC1310 ②
			3/4	N2S2310 ②	N2SC2310 ②
			1	N2S3310 ②	N2SC3310 ②
4		Specify	1/2	N2S1410 ②	N2SC1410 ②
			3/4	N2S2410 ②	N2SC2410 ②
			1	N2S3410 ②	N2SC3410 ②

Ordering Information - Combination Control Stations

Enclosure With Pushbuttons and Pilot Lights

Pilot Lights*	Pushbuttons	Diagram	Markings	Hub Size		Dead End		Through Feed		Dead End		Through Feed				
				Size	Volts	Cat. #	Volts	Cat. #	Volts	Cat. #	Cat. #	Cat. #				
1	1		Specify	1/2	120	N2S12411 ①②	N2SC12411 ①②	480	N2S12414 ①②	N2SC12414 ①②	600	N2S22414 ①②	N2SC22414 ①②			
				3/4		N2S22411 ①②	N2SC22411 ①②		N2S22415 ①②	N2SC22415 ①②						
				1		N2S32411 ①②	N2SC32411 ①②		N2S32415 ①②	N2SC32415 ①②						
			Specify	1/2	240	N2S12412 ①②	N2SC12412 ①②	600	N2S12415 ①②	N2SC12415 ①②	600	N2S22415 ①②	N2SC22415 ①②	600	N2S32415 ①②	N2SC32415 ①②
				3/4		N2S22412 ①②	N2SC22412 ①②		N2S22415 ①②	N2SC22415 ①②						
				1		N2S32412 ①②	N2SC32412 ①②		N2S32415 ①②	N2SC32415 ①②						
1	2		Specify	1/2	120	N2S13421 ①②	N2SC13421 ①②	480	N2S13424 ①②	N2SC13424 ①②	600	N2S23424 ①②	N2SC23424 ①②			
				3/4		N2S23421 ①②	N2SC23421 ①②		N2S23425 ①②	N2SC23425 ①②						
				1		N2S33421 ①②	N2SC33421 ①②		N2S33425 ①②	N2SC33425 ①②						
			Specify	1/2	240	N2S13422 ①②	N2SC13422 ①②	600	N2S13425 ①②	N2SC13425 ①②	600	N2S23425 ①②	N2SC23425 ①②	600	N2S33425 ①②	N2SC33425 ①②
				3/4		N2S23422 ①②	N2SC23422 ①②		N2S23425 ①②	N2SC23425 ①②						
				1		N2S33422 ①②	N2SC33422 ①②		N2S33425 ①②	N2SC33425 ①②						
2	1		Specify	1/2	120	N2S13411 ①②	N2SC13411 ①②	480	N2S13414 ①②	N2SC13414 ①②	600	N2S23414 ①②	N2SC23414 ①②			
				3/4		N2S23411 ①②	N2SC23411 ①②		N2S23415 ①②	N2SC23415 ①②						
				1		N2S33411 ①②	N2SC33411 ①②		N2S33415 ①②	N2SC33415 ①②						
			Specify	1/2	240	N2S13412 ①②	N2SC13412 ①②	600	N2S13415 ①②	N2SC13415 ①②	600	N2S23415 ①②	N2SC23415 ①②	600	N2S33415 ①②	N2SC33415 ①②
				3/4		N2S23412 ①②	N2SC23412 ①②		N2S23415 ①②	N2SC23415 ①②						
				1		N2S33412 ①②	N2SC33412 ①②		N2S33415 ①②	N2SC33415 ①②						
2	2		Specify	1/2	120	N2S14421 ①②	N2SC14421 ①②	480	N2S14424 ①②	N2SC14424 ①②	600	N2S24424 ①②	N2SC24424 ①②			
				3/4		N2S24421 ①②	N2SC24421 ①②		N2S24425 ①②	N2SC24425 ①②						
				1		N2S34421 ①②	N2SC34421 ①②		N2S34425 ①②	N2SC34425 ①②						
			Specify	1/2	240	N2S14422 ①②	N2SC14422 ①②	600	N2S14425 ①②	N2SC14425 ①②	600	N2S24425 ①②	N2SC24425 ①②	600	N2S34425 ①②	N2SC34425 ①②
				3/4		N2S24422 ①②	N2SC24422 ①②		N2S24425 ①②	N2SC24425 ①②						
				1		N2S34422 ①②	N2SC34422 ①②		N2S34425 ①②	N2SC34425 ①②						

① See pages 545-547
② See pages 545-547

‡ Pilot lights are transformer type except those rated 120 volts. Lamp type is 120MB, 120 volts, 3 watts.