

Steel Square Covers



METALGUARD™ PROTECTIVE PLATES

Applications:

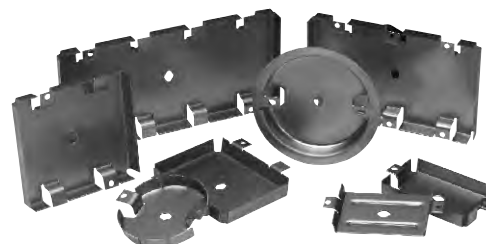
- For use with single-, two-, three- and four-gang commercial or residential boxes/plaster rings; with or without devices, switches, GFCI, etc. installed
- Commercial or residential ceiling boxes

Features and Benefits:

- Seals out sheetrock mud, sanding dust and paint overspray to keep the electrical box and its wiring free from contaminants
- Heavy duty reusable metallic plate provides mechanical protection to box and wiring and speeds up trim process
- Easy to install. All you have to do is push them in! They come out easy—just put a screwdriver into the slot in front, turn and pull them out
- Reduces risk of call backs and expense of rework because of wire and box damage
- MetalGuard serves as a guide for router in cutting out boxes

Material & Finish:

- 18 gauge steel
- Natural finish

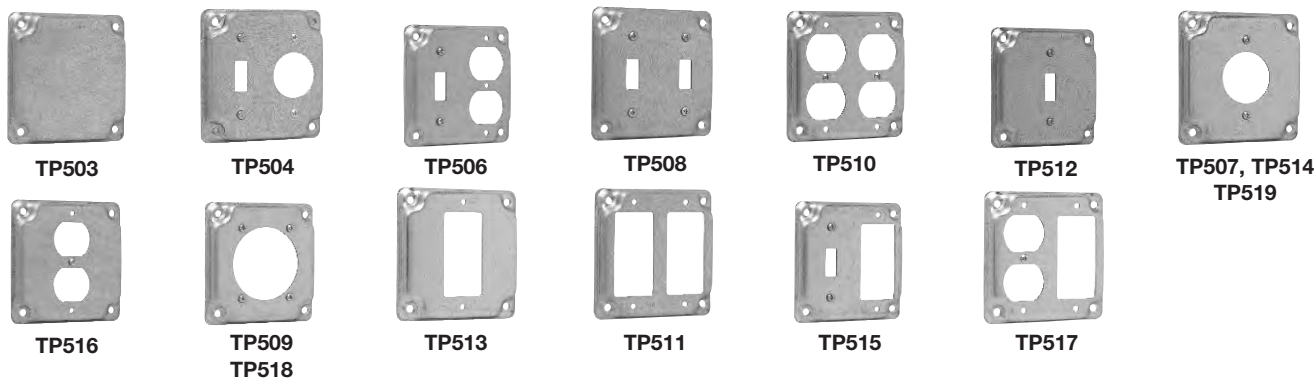


Cat. #	Description	Std. Unit Pkg.	Wt. Lbs. Per 100
	Pre-Fabricated Box, Cover, Ground Screw and Lead Assembly		
MGRK	Contractor Kit (120-1G, 40-2G, 20-3G, 5-4G, and 20-Rnd)	1	-
MGR1	1G Residential Wire Protector	60	-
MGR2	2G Residential Wire Protector	20	-
MGR3	3G Residential Wire Protector	20	-
MGR4	4G Residential Wire Protector	5	-
MGR0	Rnd Residential Wire Protector	20	-
MGMR1	1G Wire Protector for Commercial MR	50	-
MGMR2	2G Wire Protector for Commercial MR	50	-
MGMR0	Rnd Wire Protector for Commercial MR	50	-
MGS1	Gangable Spacer Wire Protector	100	-

4" SQUARE SURFACE COVERS – 5.5 CUBIC INCH CAPACITY

RAISED 1/2"

UL LISTED



Cat. #	Description	Unit Qty.	Wt. Lbs. Per 100
TP503†	Raised Blank	50	35
TP504†	For One Toggle Switch, One Single Receptacle 1 ¹³ / ₃₂ " Dia.	50	31
TP506†	For One Toggle Switch, One Duplex Receptacle	50	31
TP508†	For Two Toggle Switches	50	35
TP510†	For Two Duplex Receptacles	50	26
TP512†	For One Toggle Switch	50	35
TP507†	For One 20 Amp, Single Receptacle 1 ¹⁹ / ₃₂ " Dia.	50	37
TP514†	For One Single Receptacle 1 ¹³ / ₃₂ " Dia.	50	34
TP519†	For One 30 Amp. Twist-Lock Single Receptacle 1 ²³ / ₃₂ " Dia.	50	37
TP516†	For One Duplex Receptacle	50	31
TP509†	For One 30 – 60 Amp. Receptacle (4-wire) 2 ⁷ / ₁₆ " Dia.	50	23
TP518†	For One 30 – 50 Amp. Receptacle 2 ⁹ / ₆₄ " Dia.	50	34
TP513†	For One GFCI Receptacle	50	31
TP511†	For Two GFCI Receptacles	50	26
TP515†	For One Toggle Switch, One GFCI Receptacle	50	31
TP517†	For One Duplex Receptacle, One GFCI Receptacle	50	26

† CSA Certified